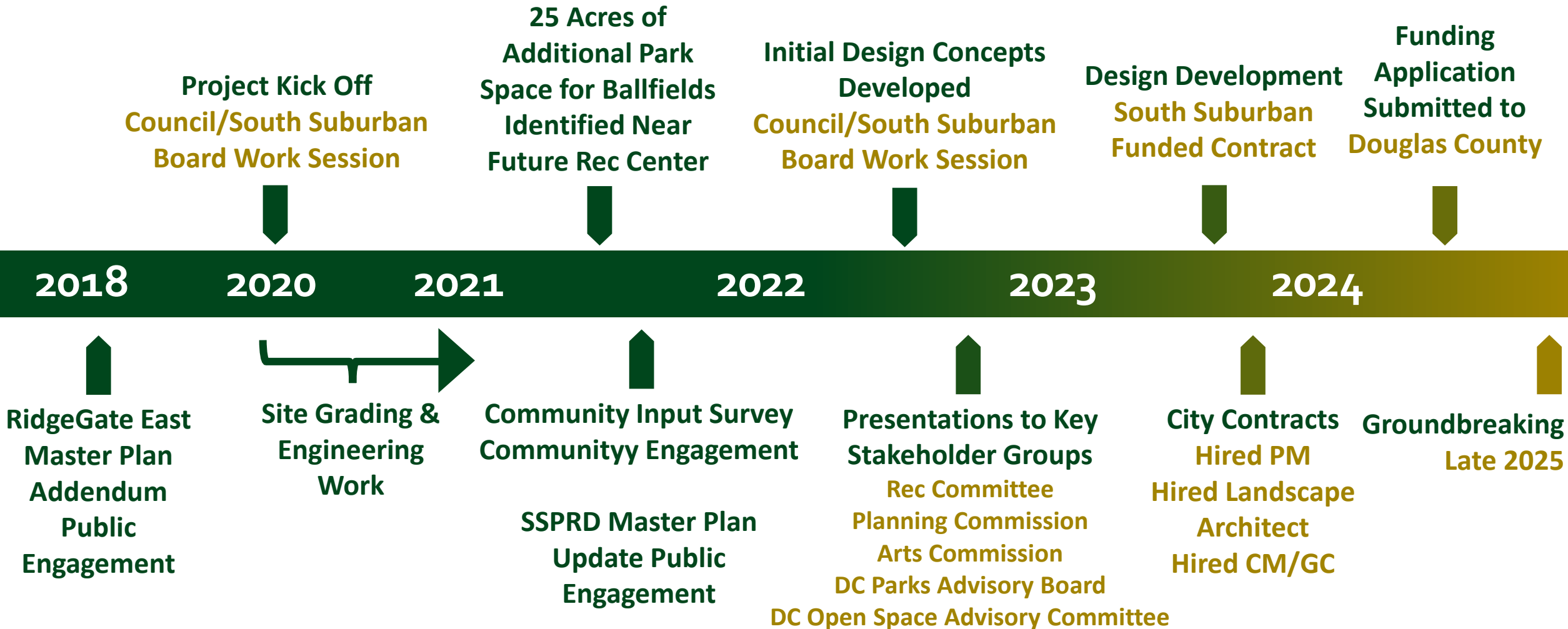


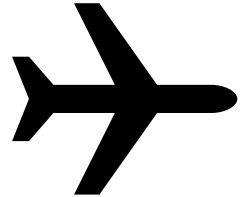
FRIENDS OF HIGH NOTE PARK

2.19.25 Community Design Update

Process Timeline



2025 Design Update Engagement Process



10,000 ft Public Engagement

Completed

High-Level View | Completed in 2022

- General themes, SSPRD Level of Service, Determine Program Elements
- 2018 RidgeGate East Master Plan Addendum, 2021 High Note Park Survey, 2022 SSPRD Master Plan

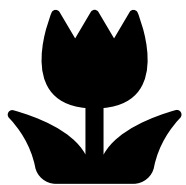


Birds-Eye Public Engagement

We Are Here

Mid-Level View – Closer to the Ground | Underway Now

- The programming is set- more detailed discussions about how those elements work and look
- Community meeting on February 19, share out to community groups



In-the-Weeds Public Engagement

Upcoming

Detail-Level Review | Late 2025

- Focus on execution and specific details
- Transition to engagement through the SIP Process

This diagram is conceptual and intended for illustrative purposes.

RidgeGate Parks & Open Space

Existing

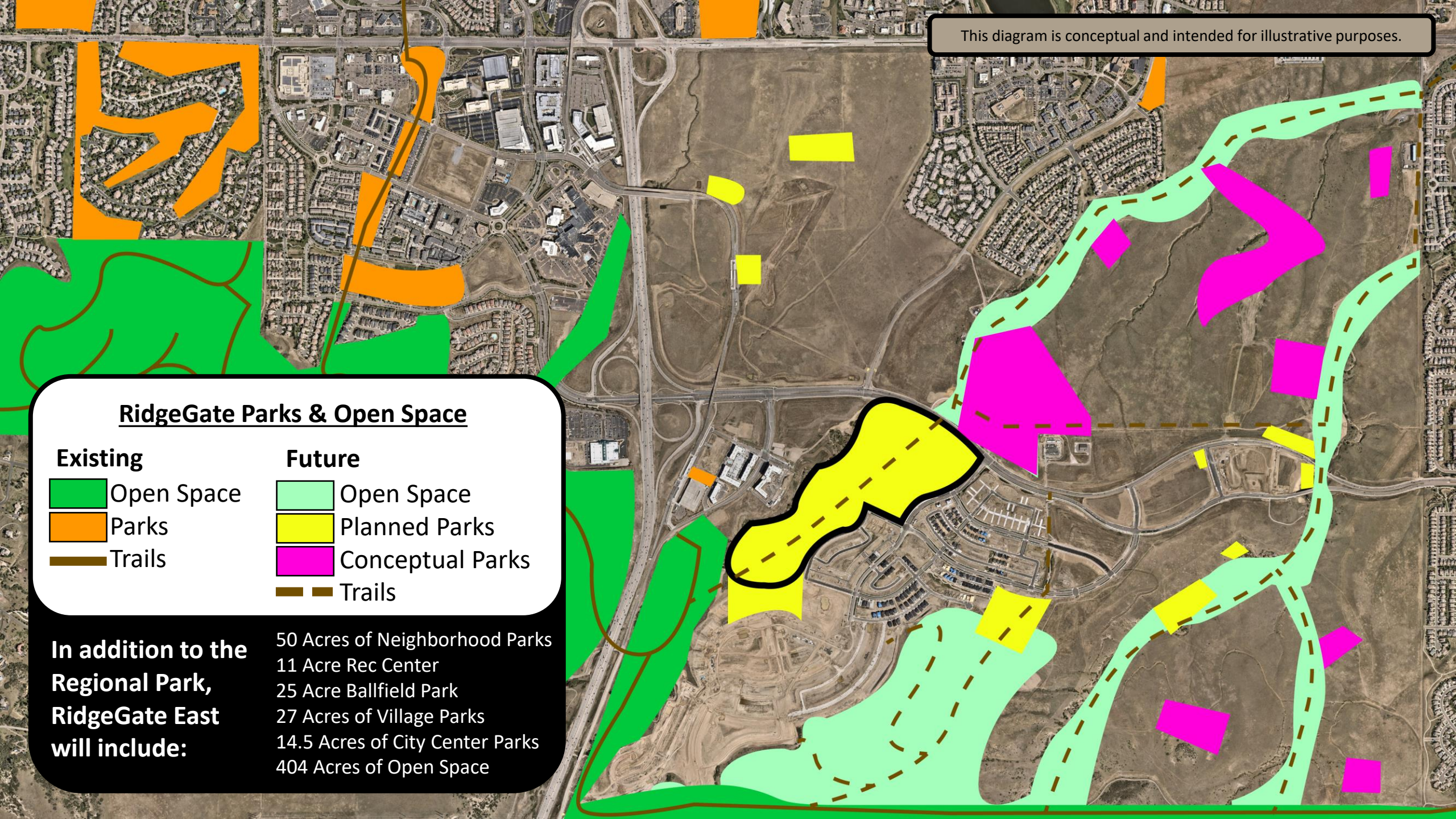
- Open Space
- Parks
- Trails

Future

- Open Space
- Planned Parks
- Conceptual Parks
- Trails

**In addition to the
Regional Park,
RidgeGate East
will include:**

50 Acres of Neighborhood Parks
11 Acre Rec Center
25 Acre Ballfield Park
27 Acres of Village Parks
14.5 Acres of City Center Parks
404 Acres of Open Space



Return of Community Site Walks



Monthly site walks for the community will return this spring!

2025 Site Walk Schedule

Wednesday, April 2 at 5:30pm

Monday, May 5 at 5:30pm

Thursday, June 5 at 5:30pm

Tuesday, July 8 at 5:30pm

Wednesday, August 6 at 5:30pm

Monday, September 15 at 5:30pm

Thursday, October 9 at 5:30pm

HIGH NOTE REGIONAL PARK

OJB

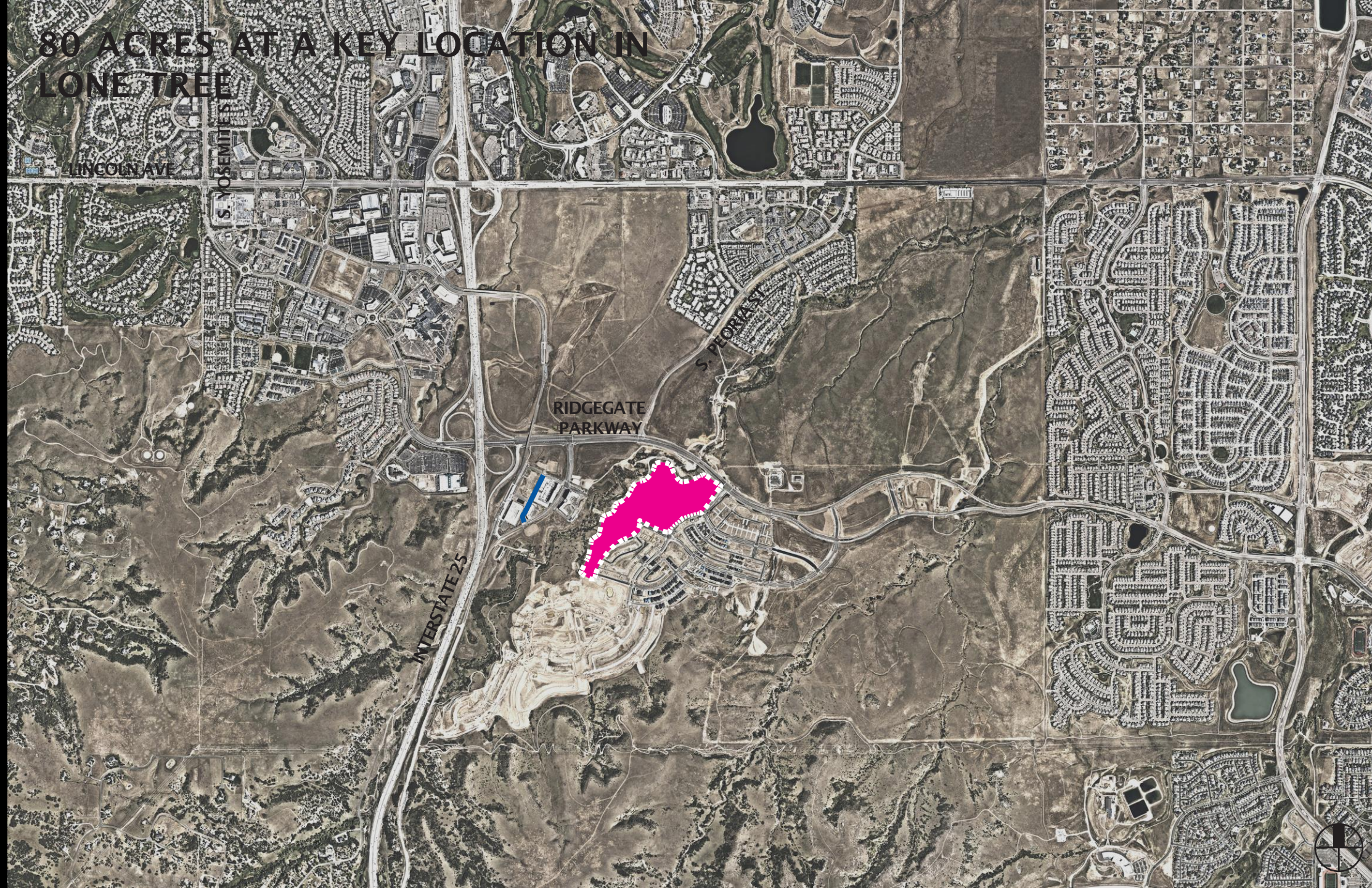


CITY OF
LONE TREE

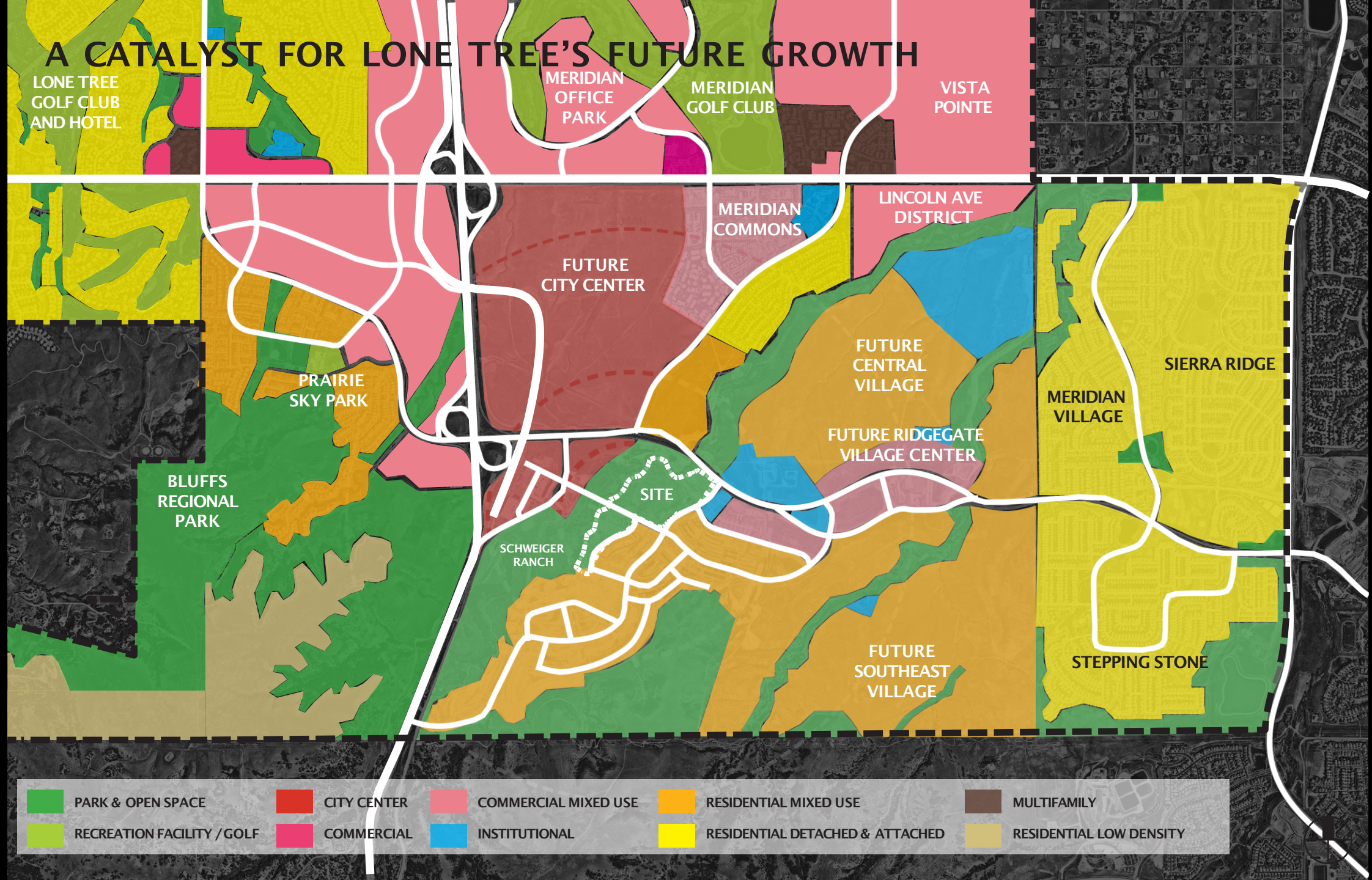


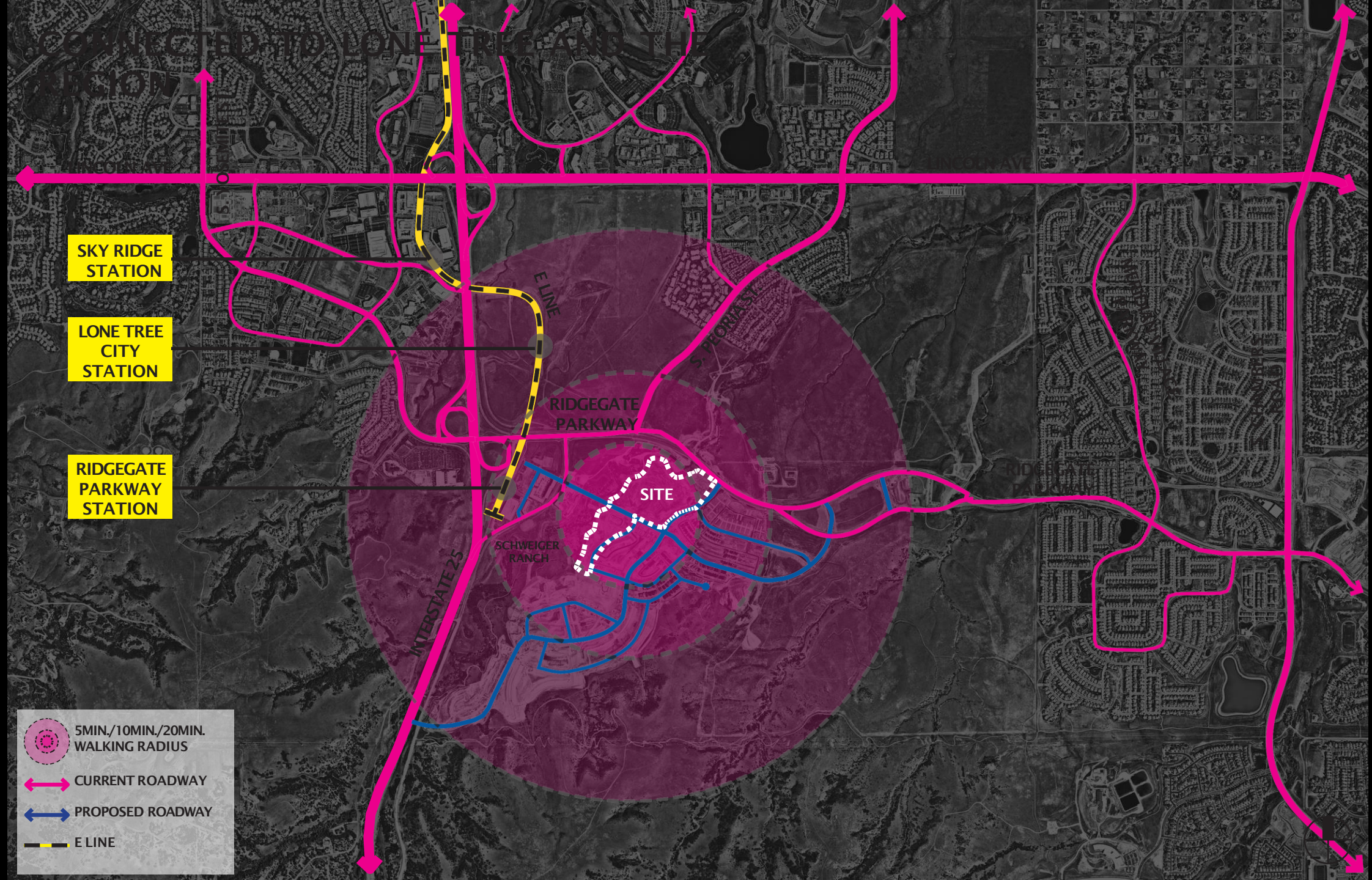
SOUTH
SUBURBAN
PARKS & RECREATION

80 ACRES AT A KEY LOCATION IN LONE TREE

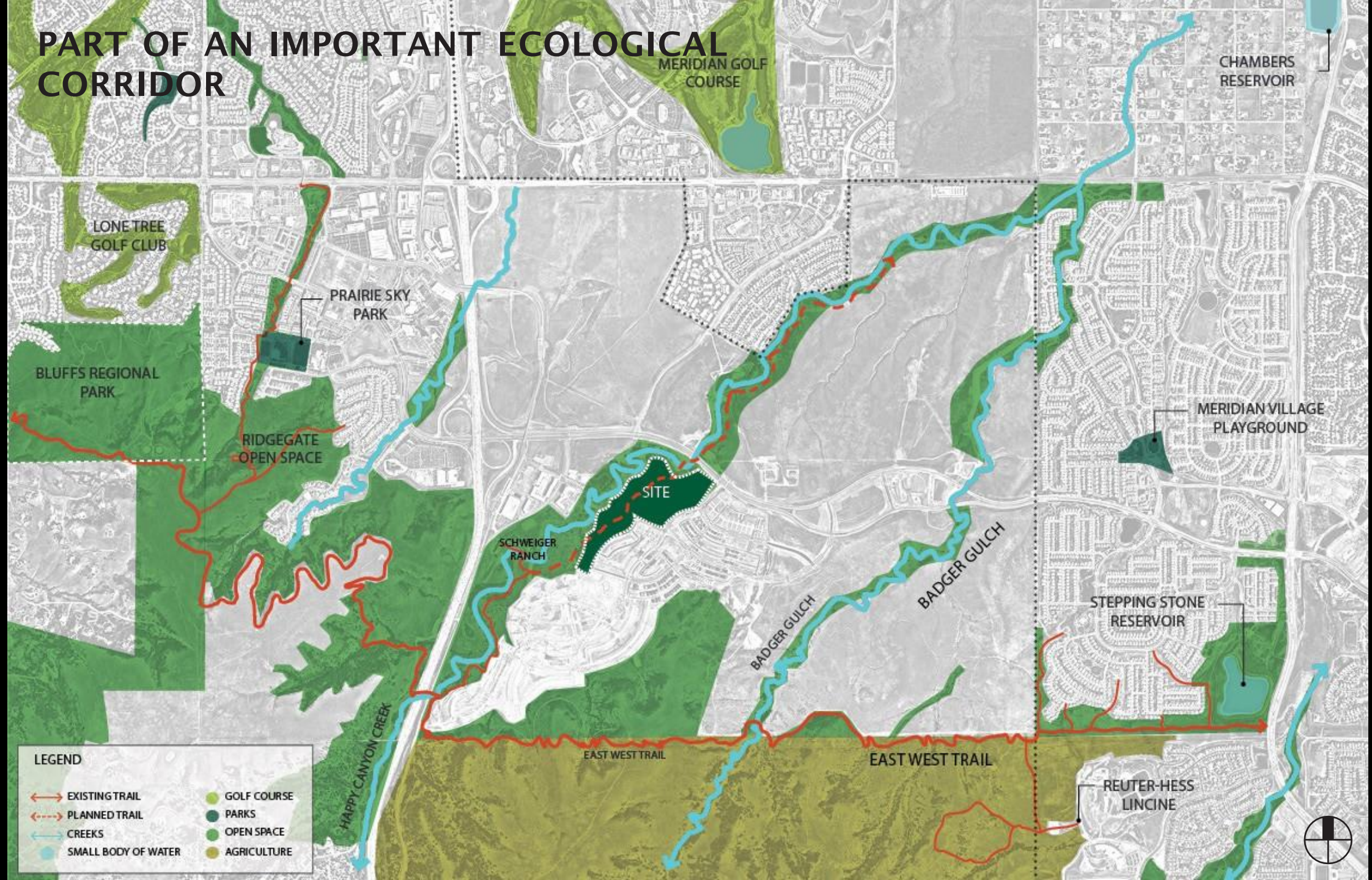


A CATALYST FOR LONE TREE'S FUTURE GROWTH





PART OF AN IMPORTANT ECOLOGICAL CORRIDOR



SITE CONDITIONS - FALL 2024



OVERLOOKING HAPPY CANYON CREEK



CONNECTED TO THE HISTORY OF LONE TREE



INSPIRED BY THE FRONT RANGE



An aerial rendering of a park development. The park is outlined by a white dashed line. It features a large green field in the center, surrounded by trees and a winding path. To the right, there are two large green rectangular fields, possibly for soccer or basketball. In the bottom left, there is a residential area with many small houses. The top left shows a parking lot with several cars. The overall scene is lush with greenery and trees.

High Note Regional Park

OJB

OVERALL PARK



INCLUDES A 1 MILE FITNESS LOOP



OJB





South Site

OJB

SOUTH SITE ENLARGEMENT



OJB



SOUTH SITE LOOKING WEST



OJB

SOUTH SITE LOOKING EAST



NORTH SITE
FIELDS

PARK CAFE

BRAID
GARDEN

STAGE

EVENT LAWN

FESTIVAL
PLAZA

1-MILE
RUNNING
LOOP

PARKING

CONCRETE
PAVING

BEER GARDEN

BARK BAR

BRAID
GARDEN

OJB

PARK CAFE

SHADE
TREES

BERMED
PLANTING

OUTDOOR
DINING

PARK
CAFE

STONE
SEAT WALL

OUTDOOR
DINING

BERMED
PLANTING

CONCRETE
PAVING

OJB

FESTIVAL PLAZA



OJB

BEER GARDEN

SHADE
TREES

BARK BAR

BERMED
PLANTING

COMMUNITY
TABLES

FIRE PITS W/
LOUNGE CHAIRS

CRUSHED STONE
PAVING

MOVABLE
FURNITURE

FLAGSTONE
PAVING

OJB

BARK BAR



BARK BAR

COMMUNITY
TABLES

DOG PARK
FENCING

SHADE
TREES

BERMED
PLANTING

FLAGSTONE
PAVING

OJB

SOUTH PROMENADE



SHADE
TREES

EVENT
SPACE

PARKING

BERMED
PLANTING

ARROYO
RESTORATION

CONCRETE
PAVING

OJB

CHALLENGE HILL



STAGE

BARK BAR

RESTROOM

PLAYGROUND

PICKLEBALL
COURTS

1-MILE
RUNNING
LOOP

CHALLENGE
STAIR
LANDING

TRAIL

BASKETBALL
COURTS

PARKING

NATIVE SEED MIX

CHALLENGE
STAIR

CHALLENGE HILL
PEAK

OJB



North Site

OJB

NORTH SITE ENLARGEMENT



OJB

PARKING AND MAINTENANCE



ARRIVAL PLAZA

WEST
FIELDS

RESTROOM +
PLAYGROUND

NORTH
FIELD

NORTH
GREEN

EAST
FIELDS

STORMWATER
BASIN

STORMWATER
BASIN

STORMWATER
BASIN

GRAVEL
TERRACE

SEATING
ISLAND

DROP OFF /
FOOD TRUCK PARKING

OJB



DROP OFF



SHADE
TREES

STONE
SEAT WALLS

FOOD TRUCK
INFRASTRUCTURE

CONCRETE
PAVING

DETECTABLE
WARNING

PROTECTION
BOLLARDS

BERMED
PLANTING

OJB

NORTH GREEN



CANOPY
WALK

STORMWATER
BASIN

NORTH
FIELD

STORMWATER
BASIN

1-MILE
RUNNING
LOOP

PLAYGROUND

NORTH
GREEN

STORMWATER
BASIN

RESTROOM

COMMUNITY
SWING

ARRIVAL
PLAZA

DROP
OFF

VISITOR
PARKING

WEST
FIELDS

SHADE
STRUCTURE

DRY
CREEK

STORMWATER
BASIN

1-MILE
RUNNING
LOOP

FIELD
TERRACE

EAST
FIELDS

ADA
PARKING

OJB



NORTH PROMENADE



WEST
FIELDS

RESTROOM +
PLAYGROUND

SHADE
TREES

COMMUNITY
SWING W/
SHADE CANOPY

STONE
SEAT WALLS

1- MILE RUNNING
LOOP

CONCRETE
PAVING

OJB

COMMUNITY SWINGS



MULTI-USE FIELDS



OJB

An aerial rendering of a proposed park development. A dashed white line outlines the project area, which includes a residential neighborhood with brown-roofed houses, a central area with a circular green field and several brown buildings, and a large section on the right with four green tennis courts. The surrounding landscape is yellowish-brown with scattered trees. The text "Thank you!" is overlaid on the right side, and "OJB" is in the bottom left corner.

OJB

Thank you!