

Timberlines



THE OFFICIAL CITY OF LONE TREE MAGAZINE | ISSUE 111



IN THIS ISSUE:

*City Celebrates 30
Year Anniversary*

*New City
Facilities Update*

*Residential Trash and
Recycling Service*

State of the City



Minutes with Mayor Harmon

Dear Residents and Businesses of Lone Tree,

Happy New Year to you and your friends and family! I hope you had a wonderful holiday season filled with joy and relaxation. As we embark on a new year, I want to take a moment to share with you the goals and priorities that will guide our work as your City Council and staff in 2025. I am excited about the possibilities this new year holds for our beloved City. Through our work and commitment, we remain focused on building a stronger community, fostering economic growth and enhancing the quality of life for everyone!

At the top of our agenda this year is revitalizing the City's Entertainment District through our partnership with the Lone Tree Business Improvement District (BID). The BID was created in 2015 to improve the Entertainment District, with a major focus on attracting strong anchor tenants to align with our vision of transforming this vital area into a vibrant destination for our community.

If you are not familiar or you may be new to Lone Tree, our Entertainment District is located at 9355 Park Meadows Drive and encompasses the area occupied by several businesses, some include Bowlero, iFLY Indoor Skydiving, Rio Grande Restaurant, Garnish, Caddy Shack Cantina, Sazon, Rare Karaoke, and the future home of Jack's at Lone Tree and 303 Sports Grill. The City Council, in collaboration with staff, continues to actively seek uses and collaborate with exciting prospects that will make this area, including the former Treo property and movie theater site, become the thriving and exciting heart of Lone Tree for the future. We hope to share more on our progress in the months ahead.

This year will be a monumental event as we plan for the groundbreakings and initiation of construction of three City facilities for the Justice Center, Public Works Operations Facility, and High Note Regional Park. Both the new Justice

Center and the Public Works Operations Facility will provide ample space to support current and future staff, accommodate growth and enable the City to continue to deliver high quality services. High Note Regional Park, Colorado's next signature public space that will be located right here in Lone Tree, is still in the design stages, as the City and our partner, South Suburban Parks and Recreation District identify certain features of Phase One of the project to initiate this year.

As all three facilities are in Lone Tree on the east side of I-25, the City also remains focused on the planning and development east of I-25, advancing the development of commercial and retail projects on RidgeGate Parkway.

Lastly, we are thrilled to announce the City of Lone Tree will celebrate its 30th Anniversary as a City! While the official birthday is November 7, the celebration will continue throughout the year with a variety of exciting events. Stay tuned for more details and don't miss out on the festivities!

These are just a few of the key initiatives and projects that are a priority for the City Council and staff, as various departments have many projects underway for 2025. You can learn more about our work as a City by keeping an eye out for updates in our Timberlines magazine, on our website, and across our social media channels. Some of these projects will include opportunities for public participation, and your input is important in shaping the future of the wonderful Lone Tree community.

Best wishes for a prosperous and exciting 2025!

All the best,

Marissa Harmon
Mayor
City of Lone Tree

TABLE OF CONTENTS



| | |
|--|----|
| Mayor and City Council | 4 |
| State of the City | 5 |
| Top Stories | 6 |
| City Council Business | 10 |
| Police and Public Safety | 17 |
| Government | 29 |
| Celebrating Lone Tree Community Spirit | 35 |
| Lone Tree Arts Center | 37 |
| Transportation and Mobility | 41 |
| Upcoming City Events | 44 |
| Economic Prosperity | 45 |
| Business Feature | 48 |
| Community Spotlight | 50 |



Meet Your LONE TREE CITY COUNCIL



**Mayor
Marissa Harmon**
At-large
Ph: (720) 582-3586
marissa.harmon@cityoflonetree.com



**Mayor Pro Tem
Jay Carpenter**
District 1
Ph: (720) 840-4286
jay.carpenter@cityoflonetree.com



**Councilmember
Mike Parr**
District 1
Ph: (303) 241-4023
mike.parr@cityoflonetree.com



**Councilmember
Alecia Brown**
District 2
Ph: (303) 968-8660
alecia.brown@cityoflonetree.com



**Councilmember
Mike Anderson**
District 2
Ph: (303) 495-8231
mike.anderson@cityoflonetree.com

LONE TREE CITY COUNCIL MEETINGS

All Lone Tree City Council meetings are open to the public and are held on the first and third Tuesdays of the month at the Lone Tree Civic Center, 8527 Lone Tree Parkway. All study sessions begin at 4:30 p.m., and regular meetings at 7 p.m. Agendas for upcoming City Council meetings are published the Friday before the Tuesday meeting.

For agendas, meeting packets, and meeting minutes, visit the City's meeting portal at cityoflonetree.civicweb.net/portal/

UPCOMING CITY COUNCIL MEETINGS

February 18
March 4
April 8
April 22



CITY COUNCIL RECOGNIZES OUTGOING CBC MEMBERS

The City extends its appreciation to the following members for their service on a City Commission, Board or Committee:

Joyce Lew, 2012-2024
*Living and Aging
Well Commission*

Howard Moore, 2019-2024
*Recreation Advisory
Committee*

Jack Swift, 2022-2024
Planning Commission
(not pictured)



STATE OF THE CITY



WITH
**Mayor
Marissa Harmon**

**Tuesday, April 22nd
at 7:30 to 9 a.m.**

Lone Tree Arts Center
10075 Commons Street, Lone Tree

Everyone is Welcome



Two ways to register:

Register by using the
QR Code or online at
go.cityoflonetree.com/SOTC-2025

For those that do not have online access,
please call **303-708-1818**.



DEEP ROOTS
NEW HEIGHTS

Celebrating 30 Years

LONE TREE: COMMUNITY VOICES SHAPED ITS FUTURE

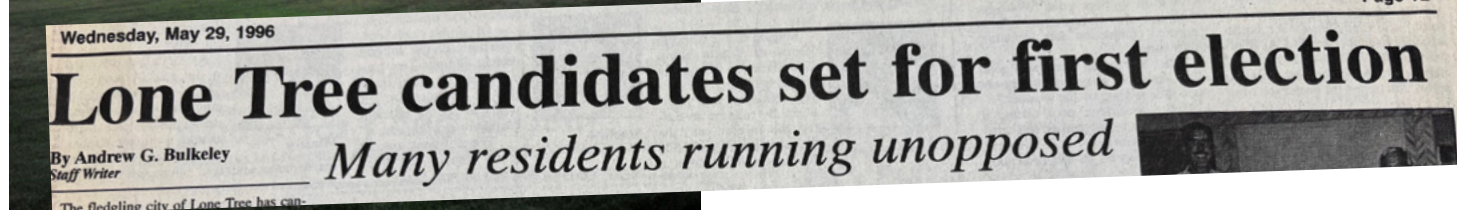
The area known as the City of Lone Tree has a rich history, originally inhabited by indigenous tribes from the Arapaho, Cheyenne, Ute, and Shoshone, who lived a nomadic lifestyle on vast prairies and grasslands. Later, Austrian immigrants John, Joseph and Jacob Schweiger became some of the first European settlers in the region. Their 38-acre ranch, which still exists today, remains a historic gem in the City.

The origins of the Lone Tree community can be traced back to the early 1980s, with the opening of a new subdivision called Lone Tree on Memorial Day weekend in 1982. At the time, it had nine households. Initially known as the Lone Tree Homeowners Association (HOA), the neighborhood later became known as the Charter HOA.



Lone Tree City Council conducts first City Council meeting

As the years passed, the area, located in unincorporated Douglas County, faced growing concerns and were troubled by their inability and lack of financial resources to enforce neighborhood standards, since there was no mandatory HOA in place. Their main concerns included the parking of recreational vehicles in private yards, unapproved exterior changes like paint color alterations



and the addition of storage sheds. Additionally, residents realized that promised amenities, such as parks and trails were not made available, as initially committed by the developer to provide.

Over the years, the Charter HOA lobbied Douglas County to address the ongoing maintenance issues in their neighborhood, striving to establish their own identity and voice. They worked to create a community that prioritized quality of life for its residents.

As the Lone Tree area grew from a neighborhood to a community enclave, by 1991 it included 13 homeowners' associations but lacked localized governance and direct oversight, leaving it vulnerable to the impacts of rapid regional development. With no control over zoning, planning, or community services, residents began advocating for self-governance to gain more influence on their quality of life. Their desire and aspirations for a distinct civic identity fueled their push for becoming a City.

In 1995, Lone Tree officially began its journey toward self-determination, becoming one of Colorado's newest cities, located south of Denver in Douglas County. The incorporation of Lone Tree marked a pivotal moment





for its 3,000 residents. The founders of Lone Tree had high expectations for their new City, envisioning it a first-class residential and business community, featuring brick fences, meticulously planned landscaping, and an overall atmosphere that would make it a highly desirable place to live, work and visit.

In November 1995, community members approved the incorporation by a wide margin, with 676 votes in favor and only 165 against. The City held its first City Council meeting in June 1996.

Today, Lone Tree stands as a welcoming City of 15,000 to a daytime population of 50,000 and nearly nine square miles. Having served as a national model for growth, the City is a testament to the role citizens can play in shaping a community's future, turning a shared vision into reality through the power of grassroots efforts. The core values established in the City's early days – safety, thoughtful planning, active resident involvement, high design standards, and community collaboration – remain the foundation of Lone Tree's evolution ensuring the path forward will continue to reflect the vision of a City committed to excellence, and maintaining its place as a nationally recognized model for a thriving community. ♦

MAJOR MILESTONES OF LONE TREE

- | | | | |
|-------------|---|-------------|---|
| 1982 | First homeowners move into the new Lone Tree development. | 2008 | Voters approve Recreation & Arts Center Bond. |
| 1985 | Lone Tree Golf Club, centerpiece of the Lone Tree residential development, opens. | 2009 | New Cook Creek Pool opens. |
| 1991 | South Suburban Parks and Recreation District buys struggling Lone Tree Golf Club and Hotel. | 2010 | Tennis Center and Park opens at Lone Tree Golf Club. |
| 1995 | City of Lone Tree incorporates. | 2011 | Lone Tree Arts Center opens. |
| 1996 | First Mayor, Jack O'Boyle. ► Lone Tree City Council holds its first meeting. | 2014 | RTD Board of Directors gave the go-ahead to move forward with the Southeast Rail Extension. ► Lone Tree Link begins operations in Lone Tree as a fixed-route circulator shuttle. |
| 1998 | Lone Tree becomes a Colorado home rule city. ► Lone Tree Library opens. | 2016 | Third Mayor, Jacqueline Millet, sworn in. ► Charles Schwab campus opens. ► Construction begins on the 2.3-mile light rail extension. |
| 2000 | Lone Tree voters approve annexation of 3,500-acre RidgeGate property. | 2016 | The Lone Tree library relocates. |
| 2001 | Heritage Hills, Centennial Ridge and Carriage Club Annexed to the City. | 2017 | City purchases the former Douglas County Library converted to The Hub. |
| 2003 | Sky Ridge Medical Center opens. | 2019 | Light Rail extension project opened for service. |
| 2004 | Lone Tree Recreation center opens. ► Civic Center Opens. ► City Establishes its own Police Department. ► Schweiger Ranch designated as a Douglas County historic landmark. | 2020 | Link Circulator Shuttle transitioned to Link on Demand Service. |
| 2006 | County Line & Lincoln Light Rail Station opened. | 2021 | Voters passed Ballot question 2E, a 1% sales tax increase to fund vital City services. |
| 2007 | Park Meadows mall annexed into Lone Tree. | 2023 | First residents move in, east of I-25. ► City annexes Sweetwater Park |
| 2008 | Second Mayor, Jim Gunning, sworn in. | 2024 | Fourth Mayor, Marissa Harmon, sworn in. |

CITY RENEWS RESIDENTIAL TRASH AND RECYCLING SERVICE FOR SINGLE-FAMILY HOMES (ATTACHED AND DETACHED)

New Service Standards Begin the Week of April 14

The overall goal of the City's Trash and Recycling program is to provide a cost-effective and efficient way to manage trash and recycling services, while maintaining high-level quality service, at no cost to residents.

Effective April 1, 2025, the City will operate under a renewed, five-year contract with Waste Connections for residential trash and recycling collection for all single-family homes (attached and detached) in Lone Tree. The contract was a result of the City's issuance of a Request for Proposals (RFP) in August 2024, seeking qualified companies to submit proposals for residential trash and recycling services since the City's current trash and recycling contract with Waste Connections is going to expire in March 2025. Waste Connections was awarded the contract with the City after careful review and consideration of all proposals by City Council and staff based on cost, ease of transition for residents, customer service, and experience.

The cost of the City's 2025 Trash and Recycling contract with Waste Connections is \$750,000, with no cost to residents who participate in the program.

City Committed to Offering Free Trash and Recycling to Single-Family Residences

Service Details

All waste must be included in your trash containers; no bags or debris left at curb or outside of the containers will be picked up other than during designated yard clean up months in the spring and fall which will be announced at that time.

Trash and Recycling Collection Times

- Monday through Friday, 7 a.m. to 7 p.m.
- Trash collection days will remain the same.
- Recycling collection will remain every other week, on your scheduled trash day.

2025 Trash and Recycling Guide

Extra copies are available at the municipal building.



go.cityoflonetree.com/trash-recycle-guide-2025



Each single-family household may receive up to three new containers at no charge, with no delivery or pick up fees. The three containers can be a mix of containers for trash and/or recycling.

Each single-family residence may choose:

- One (1) trash container: 64- or 96- gallon
- One (1) recycling container: 64- or 96-gallon

Additional Containers

- Residents may request a third, fourth or fifth trash or recycling container.
- The third container is free.
- The fourth and fifth containers are available for a fee of \$4 per month, for each container, paid directly to Waste Connections.

No Service on Specified Holidays

- New Year's Day; Memorial Day; Independence Day; Labor Day; Thanksgiving Day; and Christmas Day.

Service During Inclement Weather

- In the event of severe or inclement weather on a scheduled trash day, Waste Connections will provide collection services on the next business day.

Customer Service

- Waste Connections is committed to responding to resident inquiries and complaints within 24 hours.

Additional Services

Yard Waste Collection

- During the spring and fall seasons, two months a year, the City will offer City- wide yard waste collection, in partnership with Waste Connections. Residents can dispose with their trash, up to 10 bags of light yard waste in bags per week and up to five bundles of tree limbs per week. More information will be provided in the spring with scheduled dates.

Collection of Large/bulky items

- By special arrangement with the resident, Waste Connections will collect large/bulky items, paid for by the resident.

Special Needs Collection

- Waste Connections will provide, at no cost to the resident, a collection service program to households incapable of moving waste containers to the curb.

TRASH & RECYCLING NEXT STEPS

Residents Must Complete Your Container Preferences by February 15, 2025



All single-family residences, including new builds, must complete a form online to order up to three containers, at no charge to the resident. This online form is also used to order any additional containers paid for by the resident. (residents that do not have access to the web may call the designated Trash Line to submit your container preferences).

Access form here:



Website link:

go.cityoflonetree.com/trash-container-request-form

Trash Line: 720-509-1212

Watch for a separate mailing to all residents in March with instructions on the process and schedule for the removal of your existing trash and recycling containers. The mailing will also provide information on the delivery of your new trash containers for the new service to begin the week of April 14, 2025.

Questions or assistance, please contact the City of Lone Tree's Public Works Department

Trash Line: 720-509-1212

Email: trash@cityoflonetree.com

Website: go.cityoflonetree.com/trash-recycling

Unsure Which Size of Containers to Order?



Check out the containers with dimensions or stop by any of the locations in the City to see samples of containers:

Lone Tree Municipal Building (at the entrance)
9220 Kimmer Drive

Lone Tree Civic Center (at the entrance)
8527 Lone Tree Parkway

DOUGLAS COUNTY YOUTH INITIATIVE FOCUSED ON THE WELL BEING OF YOUTH



Mayor Harmon and Mayor Pro Tem Carpenter with the Lone Tree Youth Commission at Youth Congress in 2023

The City of Lone Tree is dedicated to fostering youth engagement and collaboration through the City's Youth Commission, and its partnership with the Douglas County Youth Initiative (DCYI). Mayor Pro Tem Jay Carpenter serves on the DCYI advisory board, both of which offer valuable opportunities for high school students to shape the future of the City to ensure they are involved, valued, protected and healthy.

The purpose of the DCYI is to unite the Douglas County community, including youth, parents, agencies, governments, schools, nonprofits and other adults to identify gaps and collaborate to address the needs of young people including advocating for system improvements that will better serve youth and families of Douglas County; supporting youth and encouraging their contributions to the broader community; effectively intervene with youth who are endangered by their decisions and/or situation; supporting and expanding opportunities for youth to express viewpoints; and supporting parents and caregivers with resources, education and unconditional care.

The Youth Initiative includes programs such as the Outstanding Youth Awards which recognizes teenagers who have overcome adversity. The WrapAround program is a free, voluntary program that offers customized services to families with children ages 5-21. The DCYI also partners with Iglesia Nueva Vida offering the La Liga Futbol program for kids from third through fifth grade to play free soccer and hosts an annual young congress where high school students from Douglas County can share their ideas and solutions with elected and community leaders.

The DCYI is a collaboration among Douglas County Government, Douglas County Schools, Douglas County Libraries, the City of Castle Pines, the City of Lone Tree, the Town of Castle Rock, the Town of Parker, and the Highlands Ranch Metro District.

For more information, visit douglas.co.us/youth-initiatives/ or call 303-814-5327. To access the Douglas County Youth and Family Resource Guide, visit douglas.co.us/documents/youth-and-family-resource-guide.pdf/ ♦

ZIP CODE BILL POSTPONED IN CONGRESS

CITY WILL CONTINUE TO ADVOCATE FOR ITS OWN DISTINCT ZIP CODE

For many years, there has been advocacy at the local and national levels for cities like Lone Tree to have their own distinct ZIP Code to better address community identity, emergency management, public safety, business attraction and retention, insurance coverage, and mail delivery. Despite strong local support and numerous lobbying efforts in the 2024 Congressional Session, the proposed ZIP Code designation bill, H.R. 8753 did not make it through the legislative process in 2024. Colorado communities included in the proposed bill were Lone Tree, Castle Pines, Centennial, Cherry Hills, Greenwood Village, Highlands Ranch, Severance, Silver Cliff, Sterling Ranch, and Superior.

Since 2022, Lone Tree has been advocating for a distinct ZIP Code to support the community's growth and development. While this setback at the federal level is disappointing, the City remains committed to continuing its advocacy with Congress during the 2025 Congressional Session, pushing for the reconsideration of a ZIP Code bill that would direct the United States Postal Service (USPS) to assign unique ZIP Codes for communities.

Lone Tree has three ZIP Codes: 80124, 80123, and 80112. As part of the proposed federal legislation, the City had requested these three ZIP Codes be merged into a single unified ZIP Code – 80124 – to better align with the City's boundaries and address major challenges the City faces under the current ZIP Code system.

A lack of a unified ZIP Code creates challenges for emergency response by the Lone Tree Police Department and South Metro Fire Rescue leading to

discrepancies in location data. If federal, state, and other regional agencies are involved in the response, Lone Tree could face delays in emergency response times, as these agencies may need additional time to accurately identify the correct locations and addresses.

The nonconforming ZIP Codes have caused significant issues with sales tax remittance, both within and outside of Lone Tree. Since 80134 is a primary ZIP Code for the Town of Parker, many businesses in Lone Tree could mistakenly believe they are in Parker due to their 80134 ZIP Code, and thus remit sales tax to Parker. Additionally,

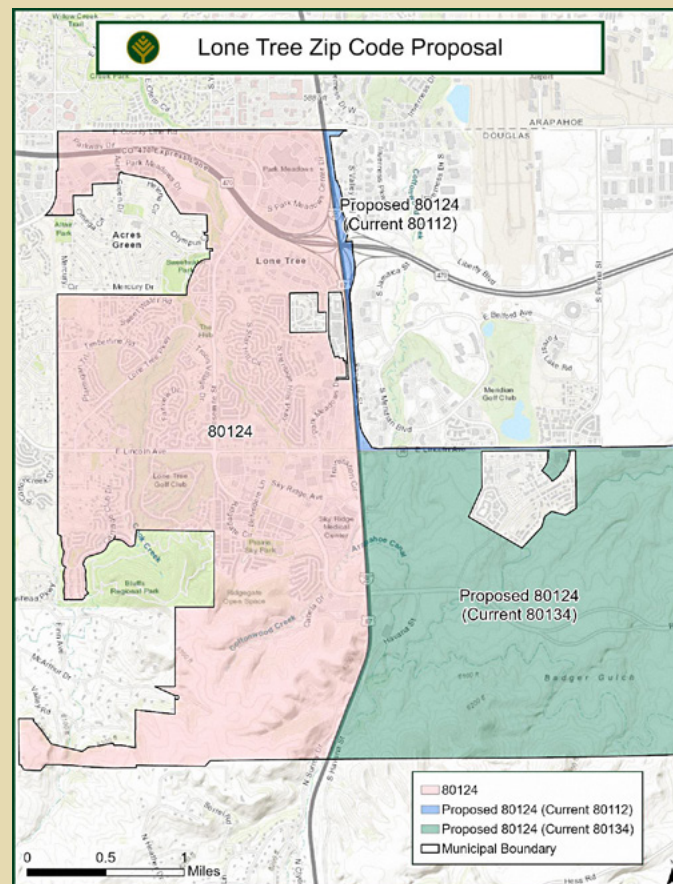
businesses outside of Lone Tree's city boundaries but with an 80124 address are inadvertently submitting sales taxes to Lone Tree.

Without an independent ZIP Code, economic development efforts face challenges that impact business growth and community expansion. Major retailers, commercial developers, brokers, and the business community typically evaluate business expansion opportunities based on trade areas grouped by ZIP Codes, making it more difficult for Lone Tree to attract new businesses and foster economic growth.

Lastly, having an address improperly associated with another jurisdiction can lead to higher insurance rates for residents. In some cases, residents are charged different payment rates if

they reside in a community that has a ZIP Code that is shared with neighboring jurisdictions.

For more information on the ZIP Code issue, please email Jeff Holwell, Economic Development and Public Affairs Director at jeff.holwell@cityoflonetree.com. ♦



THE NEW 23RD JUDICIAL DISTRICT



This past December, Lone Tree Mayor Marissa Harmon and Councilmember Alecia Brown joined other officials of the 23rd Judicial District at a media conference, hosted by DA-Elect George Brauchler. Brauchler gave a strong public safety message vowing to keep the communities of the 23rd Judicial District safe.

The 18th Judicial District – comprised of Arapahoe, Douglas, Lincoln and Elbert counties – has grown more than any other judicial district in Colorado and served more than one million people. With the exponential growth in these counties, local officials began advocating for a new judicial district in 2018. The Colorado General Assembly voted in 2020 to establish a new judicial district – the 23rd – by splitting the current 18th district.

Beginning January 14, 2025, the 18th Judicial District will include only Arapahoe County, while Douglas, Elbert and Lincoln will create the 23rd Judicial District. The creation of the 23rd Judicial District allows for prosecutorial decisions and resources to focus on crime occurring in only Douglas, Elbert, and Lincoln counties which includes any criminal cases in the City of Lone Tree.

This new judicial district will also give residents of the district a stronger voice in district attorney and judicial retention elections. The new judicial district will also allow a more tailored, locally focused approach to criminal case adjudication. This could include expanded juvenile and adult diversion programming, and specialty “problem-solving” courts focused on the needs of veterans and families, substance use treatment, or management of mental health conditions.

This past November 2024, voters elected George Brauchler, who was sworn in on January 14, 2025, to serve as District Attorney for the 23rd Judicial District, officially creating the first new judicial district in the State of Colorado since 1965. The new judicial district, while smaller, will still be among the five largest judicial districts in the state. ♦

CITY COUNCIL RECOGNIZES SOUTH SUBURBAN FOR NATIONAL AWARD

In November, Rob Hanna, Executive Director and former Lone Tree City Councilmember and board member, Cathie Frazzini of South Suburban Park and Recreation District shared with the City Council their 2024 Grand Plaque National Gold Medal Award, a premier recognition that celebrates excellence in the park and recreation industry!

The Grand Plaque is the highest honor a parks and recreation organization can achieve and is awarded to only one agency in the country in each of the population-based award divisions by the American Academy for Park and Recreation Administration (AAPRA), in partnership with the National Recreation and Park Association (NRPA). After being a finalist last year, South Suburban is honored to bring the top award back to the District for the first time since 1996!

This is a major accomplishment that is a testament to the District's superb parks and recreation services. Lone Tree is so proud to partner with them to maintain and create beautiful, engaging, and active parks, open spaces, and programming in the City of Lone Tree! ♦



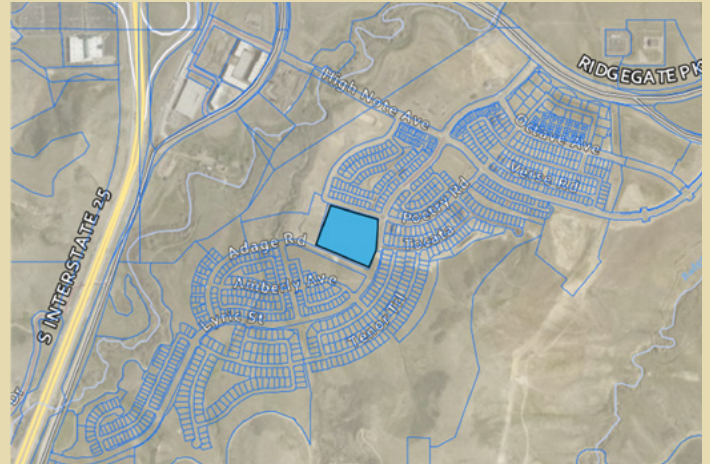
CITY DEDICATES LAND TO DCSD FOR NEW ELEMENTARY SCHOOL



The passage of the Douglas County School District's (DCSD) \$490 million bond initiative last November will fund updates to aging schools and facilities, enhance career and technical education pathways (including for students with special needs), and provide safety and security improvements across all schools. Additionally, the bond will help expand the Legacy Campus in Lone Tree, and construct two new elementary schools, one of which will be in the rapidly growing RidgeGate subdivision in Lone Tree.

In December 2024, the school district notified the City of its intention to finance construction of an elementary school through a bond sale to be completed in December 2024. At the December 3, 2024, City Council meeting, the City Council approved a resolution accepting transfer of land from RidgeGate to Lone Tree and dedicating same land from the City to the DCSD. The land transfer from RidgeGate to the City was part of an amended annexation and development agreement for the east side of the City requiring RidgeGate Investments to dedicate 106 acres of school land in RidgeGate East to the City for ultimate transfer to the school district. The timing of the transfer was based on the district's readiness and ability to finance the construction of each school.

In addition, former Mayor of Lone Tree Jackie Millet was appointed as Bond Director for the district to assist in the development, procurement and management of all aspects of the 2024 Bond initiative. Millet will serve as the primary point of contact between DCSD and various government agencies, elected officials, and other stakeholders concerning bond projects. Millet will also manage bond reporting and presentations for district stakeholders, including the Mill Bond Oversight Ad Hoc Committee, Long Range Planning Committee, Fiscal Oversight Committee and the Board of Education.



The new RidgeGate Elementary school is currently in the design phase, with an anticipated grand opening in 2027.

To learn more about the district's bond initiative including how each school will benefit from the bond funding, visit funding.dcsdk12.org. ♦

LONE TREE RECOGNIZES TRAILBLAZING YOUTH INNOVATOR ANIRUDH RAO

Lone Tree resident Anirudh Rao, a 12-year-old young innovator and a 7th-grade student, was recognized by the City Council for being named a recipient of the International Eco-Hero award and the TruLittle Hero International Award for his community service and innovations. Eco-Hero awards are presented by Action for Nature (AFN), a U.S.-based non-profit, that recognizes and rewards young people who are taking action to solve the world's tough environmental problems. The TruLittle Hero Awards is a ceremony organized by Cause4Children Limited.

Rao, who appeared on the Jennifer Hudson show in October 2024, is the inventor of Revere, an early tornado detection system that earned recognition as a Paradigm World Challenge winner. His work focuses on addressing critical challenges exacerbated by climate change.

Anirudh is also a finalist in the National STEM Challenge, organized by the U.S. Department of Education for Semmelweis, a Wound Management Solution. He combines his passion for science, history, and culture to inspire others, having spoken at various elementary schools on the importance of interdisciplinary learning. Over the past two years, he has led workshops for over

4000 students on topics ranging from 3D printing and beginner AI to the flora, fauna, myths, and traditions of cultures including Japan, Egypt, India, China, and Kenya.

A dedicated volunteer, Anirudh works with the Children's Kindness Network, organizing an annual global essay and art contest on kindness towards people and the environment. ♦



CITY COUNCIL WELCOMES CUB SCOUTS TO CITY



The City Council welcomed Troop leader, Adam Gardner and Webelo Den, Cub Scout Pack 770 from St. Thomas More Catholic School and Parish at the Council meeting in December. The scouts shared with the City Council what activities they do in the community and observed the City Council in action during the City Council Study Session.

If your group is interested in attending a City Council meeting or would like to meet the City Council, please email cmstaff@cityoflonetree.com or visit cityoflonetree.com. ♦



LONE TREE POLICE DEPARTMENT

CELEBRATES 20 YEARS IN 2025

The Lone Tree Police Department (LTPD) is celebrating its 20th anniversary as a police department in 2025. The LTPD's history began in 2005, ten years after the City of Lone Tree was incorporated as a City in 1995. With a resident population of 8,000, the police department assumed public safety duties from Douglas County at midnight on January 1, 2005. The department's police force consisted of 22 police officers, one records technician and one animal control employee. Their first arrest was made early that morning on a report of a motorist driving under the influence. This was the beginning of a two-decade tradition of providing excellent law enforcement services to the Lone Tree community.

Today, the department's growth is paramount to the City's exponential growth over the past 20 years that now includes a resident population of 15,000, and a daytime population of 45,000. The department has grown to 60 sworn officers and has expanded their work in additional programs and services, including victim advocates, community safety officers, volunteers in police services, and six records technicians. The Lone Tree Police Department is known for its high commitment to public safety, serving and working closely with residents, businesses, and stakeholders in the community including HCA HealthONE Sky Ridge, Park Meadows Retail Resort, the Douglas County School District and loss prevention staff throughout the business community.

In 2005, the Department created 2,446 case reports. The vast majority of reported crimes were traffic accidents, followed by theft. In 2024, the Department created 4,420 case reports and responded to over 72,000 calls for service.

It's an exciting time for the Lone Tree Police Department as a new Justice Center is underway to house both the Police Department and the Municipal Court. The new Lone Tree Justice Center will be located on the east side of I-25 as part of the RidgeGate development. A groundbreaking is planned later this summer, with a grand opening in 2026.

The Lone Tree Police Department is grateful for all the officers and civilian employees who serve the Lone Tree community, past and present. Thank you to all who dedicate their lives to keeping our residents, schools, businesses and visitors safe! ♦



Four of the original patrol officers, from left to right: Commander Brett Callahan, Corporal Dan Andreas, Support Services Manager Scott Cavenah, and Lieutenant Scott Vandenberg.



LTPD'S SWIFT RESPONSE REUNITES CHILD WITH FAMILY AT PARK MEADOWS RETAIL RESORT



On Black Friday at Park Meadows Retail Resort, Michael and his mom were doing their holiday shopping when he wandered off on his own, navigating through the large crowds and long lines. His mother frantically contacted the Lone Tree Police Department Mall Unit and officers responded within a few minutes to offer aid.

With the help of mall security, Michael was found safe. In December, Michael and his mom extended their gratitude to the officers for helping that day with gifts, smiles and high-fives. The LTPD is always ready to ensure our community stays safe, providing prompt and professional service while fostering a secure environment through proactive patrols, community outreach, and collaboration with partner agencies and other organizations.

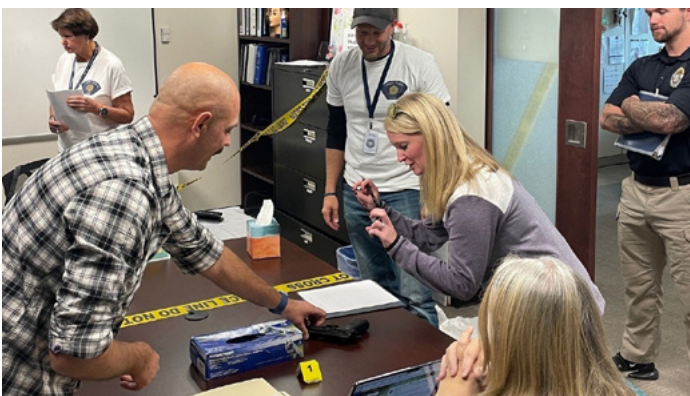
Visiting Park Meadows Retail Resort and need police assistance? There is a team of police officers assigned to the Lone Tree Police Substation at Park Meadows Retail Resort to build relationships and ensure the safety of mall patrons and retailers. Through their friendly presence, officers are always available during mall hours to offer assistance and support to resort shoppers and employees. The Lone Tree Substation is in front of the Cheesecake Factory in the Vistas with its main entrance facing north. Officers are available Monday through Saturday, from Noon to 10 p.m., and Sunday, 10 a.m. to 8 p.m. A call button to the Lone Tree/Parker 9-1-1 dispatch center is available at the substation entrance should officers be in the mall or patrolling the parking lots.

For more information or to contact the LTPD Mall Unit, please email Sergeant James Nunn at james.nunn@cityoflonetree.com or call 303-495-4289. ♦



2024 POLICE CITIZENS' ACADEMY

LTPD's Citizens' Academy provides citizens with an inside look into police operations and enhance relationships between the police and the community in a fun way! Registration for the 2025 Academy will be announced soon!





ESSENTIAL TIPS FOR SECURE NEIGHBORHOODS

As Lone Tree continues to grow, maintaining a safe and secure community remains a top priority for the Police Department. Here are practical safety tips to help you protect your home and vehicles.

Deter Theft in Your Home

Thieves break into homes by simply entering through doors, windows or open garages. Sometimes thieves will go door to door looking for unoccupied homes. If an unidentified person comes to your door, take precautions before you open your door. Never open the door to someone you do not know and always ask for identification.

- **Doors and locks.** Thieves can break into your home through locked and unlocked doors and windows. Lock all doors and windows before you leave the house or go to bed. The front or back door is the most common point of entry.
- **Windows.** Unlocked windows, including in the basement, are frequent points of entry.
- **Garage doors.** Keep your garage closed and locked, including the door always leading from the garage to your home and any side doors. The door from the garage into the house also deserves a deadbolt.
- **Keys and key chains.**
Do not hide keys outside your home.
- **Light it up.** Exterior lights (especially the ones that are activated by motion) are a great deterrent to thieves. Use lights on timers in your home, especially when away making your home look occupied.

Deter Theft of Your Vehicles and Valuables

With thieves increasingly targeting vehicles in neighborhoods, taking proactive measures is more important than ever. Vehicles left unguarded and valuables left in plain sight are prime targets for opportunistic criminals.

- **Lock Your Vehicle.** Always lock your car doors and secure windows.
- **Remove valuables.** Never leave valuables such as electronics, bags, or personal items in plain sight inside your vehicle. Store these items in the trunk or take them inside your home.
- **Secure the Garage.** Ensure that your garage door closes securely. Check that all side doors and windows to the garage are also locked.

- **Install Motion-Sensor Lights.** Place motion-sensor lights around your driveway and garage area. This can deter criminal activity by illuminating the area when movement is detected.
- **Park in Well-Lit Areas.** When parking outside, choose well-lit, busy areas or within sight of your home. Avoid parking in secluded or poorly lit areas.
- **Use a Steering Wheel Lock.** A visible steering wheel lock can deter thieves.
- **Install a Vehicle Tracking System.** GPS tracking devices can help locate your car if it is stolen.
- **Keep your keys secure.** Never leave your car keys inside the vehicle.
- **Engage Your Alarm System.** Ensure that your car's alarm system is activated whenever you leave it unattended.

Residential Property Watch Request in Lone Tree

If you are a resident of Lone Tree and are planning to be away on vacation, you may request increased patrols of your home and your street while you are away by a member of the Lone Tree Police Department. If an issue is detected, the police department will attempt to notify the resident or designated caretaker.

Once a Property Watch form is submitted online, police department personnel will:

- Walk around the front and back of your property
- Verify doors are locked
- Verify the property is secure
- Move packages out of street view

To request a Property Watch, visit cityoflonetree.com and submit a Property Watch request form online.

For more information on the security of your property or the safety of your neighborhood, reach out to the police department's Community Partnership Unit at cpu@cityoflonetree.com ♦

SMALL BUSINESS SAFETY

At the City of Lone Tree, our businesses are critical to the vitality of our community. The well-being of your business, employees and customers is a priority, and the Lone Tree Police Department is committed to assisting businesses in maintaining a safe and secure environment. In addition, it's encouraged for businesses to watch out for each other by sharing information and alerting of crime patterns and suspicious activities to create a stronger network of vigilance.

In the spirit of prevention, the following are some tips to safeguard your business.

Burglary Prevention

- Make sure all outside entrances and inside security doors have deadbolt locks.
- Windows should have secure locks and burglar-resistant glass. Remove all expensive items from window displays at night and make sure you can see easily into your business after closing.
- Light the inside and outside of your business, especially around doors, windows, skylights, or other entry points.
- Invest in an alarm and camera system and ensure your system is working properly. Check the system daily and run a test when closing.

Robbery Prevention

- Greet every person who enters the business in a friendly manner. Personal contact can discourage a would-be criminal.
- Keep windows clear of displays or signs and make sure your business is well-lighted. Check the layout of your store, eliminating any blind spots that may hide a robbery in progress.
- Keep small amounts of cash in the register to reduce losses.
- Make bank deposits often and during business hours. Don't establish a pattern, take different routes at different times during the day.
- If you or your employees are confronted by a robber, cooperate. Merchandise and cash can always be replaced — people can't!

Credit Card Fraud

- If you are suspicious of the purchaser, make a note of appearance, companions, any vehicle used, and identification presented. Call the police department.
- Look for "ghost" numbers or letters. Criminals will change the numbers and/or name on a stolen card. To do this they either melt the original name and numbers off or file them off. Both processes can leave faint imprints of the original characters.
- Examine the signature strip on the credit card. A criminal may cover the real card owner's signature with "White-Out" and sign it on the new strip.



Crime Prevention Through Environmental Design (CPTED)

The Lone Tree Police Department participates in Crime Prevention Through Environmental Design (CPTED), a multidisciplinary approach to deterring criminal behavior through environmental design. CPTED strategies include certified officers reviewing plans of new developments, buildings, or any other proposed structures to be built along with major renovations of existing structures and offering recommendations to prevent crime even before construction begins. The overall objective is to have structures designed with crime prevention tactics incorporated to reduce the probability of crime. CPTED examines various aspects including the creation of space, its use and safety; the locations of land uses; positions of buildings and other structures; interior and exterior design details such as color, lighting, entrances and exits, and landscaping; and users of space and when and how they will use it.

Shoplifting Prevention

- Train employees in how to reduce opportunities for shoplifting and how to apprehend shoplifters. Work with law enforcement to teach employees what actions may signal shoplifting.
- Keep the store neat and orderly. Use mirrors to eliminate "blind spots" in corners that might hide shoplifters. Merchandise should be kept away from store exits to prevent grab-and-run situations.
- Design the exits of the business so all persons must pass by security personnel or store employees. You may want to use an electronic article surveillance system or other inventory control device.
- Dressing rooms and restrooms should be always watched. Keep dressing rooms locked and limit the number of items taken in.

For more information on business safety or to sign up for a CPTED business assessment, please contact LTPD Community Partnership Unit at 303-805-3342 or cpu@cityoflonetree.com ♦

RULES OF THE ROAD



When it comes to road safety, a friendly reminder can go a long way. Whether you're commuting to work, running errands, or just enjoying the drive, following the rules of the road isn't just about obeying the law – it's about protecting yourself, other drivers, pedestrians, and cyclists.

Colorado Driving Laws

- Pedestrians have the right of way.
- Right of way goes to oncoming vehicles when turning left.
- When making a right turn on a red light, you must always come to a complete stop at the intersection before turning.
- Use the left lane as a passing lane only.
- Failing to use a turn signal can result in fines and points on one's license.
- Having valid insurance is mandatory in Colorado.
- You can turn right at a red light unless a sign prohibits it at the specific intersection. The same rule applies to making a left turn on a one-way street.
- You do not have to stop for a bus on the other side of a divided road with a barrier.
- Every driver and every front-seat passenger of a motor vehicle must wear a seat belt. Additionally, children 15 years old and younger must be properly secured no matter where they are seated.

Traffic Roundabouts

Those entering a traffic roundabout, otherwise known as a traffic circle, do not have the right of way immediately. Newcomers must yield to those already inside the roundabout. This gives the right-of-way to the cars already in the traffic circle. Approach it slowly as a yield sign and expect there may be cars already in the roundabout or in the act of entering.

One-Way Left Turn on Red

Making a left turn on red onto a one-way street is permitted in Colorado as long as you're turning from a one-way road onto another one-way road.

Move Over Law

The Move Over law requires drivers to slow down and move over a lane whenever they encounter any emergency vehicle, tow truck, or highway maintenance vehicle with its hazards flashing — and if they can't move over, they must slow down. For any stationary vehicles, emergency or not, the "Move-Over" law dictates that drivers need to create as much space as possible. The enforcement of the law is significant in protecting all individuals on the road, not just emergency responders. ♦



COFFEE WITH A COP

AT PARK MEADOWS RETAIL RESORT

Watch for announcements on 2025 events hosted by the LTPD



LTPD AND RETIREES AT MORNINGSTAR SENIOR LIVING



SEASON OF GIVING FROM THE LTPD

When Lone Tree school resource officers (SROs) learned that some local families were struggling during the holidays, they knew they had to step in. School resource officer Kyle Goudy quickly coordinated with Eagle Ridge Elementary Principal Doug Humphreys, parents and staff to sponsor 12 families and 24 children. Together, Goudy and the Police Department officers and staff worked to collect and wrap gifts, ensuring that every child would have a magical holiday season.

The LTPD thanks Zumiez, Foot Locker, and the LEGO Group Store at Park Meadows Retail Resort for their donations. ♦



CONTRACTOR FRAUD

KNOW THE SIGNS

Most contractors are reputable, but there are some dishonest contractors. While it's important to generally trust your contractor in your home, you should always exercise caution and do thorough due diligence before letting anyone work inside or outside your home. Taking necessary precautions will protect your household and your property.

Here are some key steps to take:

Make sure the contractor you hire is legitimate.

Search for the individual and/or company online and read reviews. Find out if there are complaints against the contractor with the Better Business Bureau.

Don't pay in full upfront. Avoid paying large upfront deposits and instead opt for a payment schedule tied to project milestones. Pay with a check or credit card to leave a record of your payments. Get an invoice and a receipt.

Get multiple quotes. Compare quotes from at least three different contractors to ensure you're getting a fair price.

Check licenses and insurance. Verify the contractor is properly licensed and insured. Visit dora.colorado.gov/check-a-license

Get a written contract. The contract should include every task and repair the contractor plans to make. It should also include start/finish dates and prices for repairs and materials. Don't sign a contract without thoroughly reviewing all terms and conditions.

Obtain the contractor's essential business information. Before making a hire, retain:

- The contractor's identification with their name and business name.
- A copy of the contractor's business license. Make sure it's not expired.
- A copy of the contractor's proof of liability insurance. Make sure it shows the person or company's name, phone number, and policy number. Call the insurance company to verify the coverage.
- A copy of the contractor's proof of workers' compensation insurance.



Ask for references. Contact past clients to inquire about the quality of work, communication, and overall experience. Review their past work if possible.

When might trust be a concern?

- Unwillingness to provide references
- Lack of proper licensing or insurance
- Unusually low bids
- Uncomfortable behavior
- Lack of transparency
- Requesting a large upfront payment

For more information or If you feel you have been a victim of contractor fraud, please call the Police Department at 303-799-0533. ♦

NEW COLORADO LAWS

EFFECTIVE JANUARY 1, 2025

Ban on Hand-Held Mobile Devices While Driving

To reduce distracted driving, the new law prohibits people from using a mobile electronic device while driving unless they use a hands-free accessory. Colorado joins 29 other states in prohibiting the use of hand-held mobile devices while driving. Penalties for violating the new law begins with a \$75 fine and two license suspension points for the first offense. Repeat offenders face higher fines and more license suspension points. The law includes exemptions for individuals reporting emergencies, utility workers, code enforcement officers, animal protection officers, first responders and individuals in parked vehicles.



Gun Storage Requirements

To prevent gun thefts from vehicles, the new law requires gun owners who choose to leave a gun in their cars must securely store it in a locked, hard-sided container that is out of sight when it is left in an unattended vehicle. Approved containers can include a locked glove compartment, locked center console or trunk. Gun owners who fail to comply with the new law could face a \$500 fine.



Child Passenger Safety Law Changes

To help protect child passengers, updates were made to the Colorado's Child Restraint System law for the first time in 14 years.

Key Changes:

- **Booster seats:** Children must now use a car seat or booster seat until they are 9 years old (previously under 8 years old).
- **Rear-facing car seats:** Children under two years old and weighing under 40 pounds must be restrained in a rear-facing car seat in the rear seat if available (previously under one year old and under 20 pounds). Children under two years old but weighing over 40 pounds may use either a rear-facing or forward-facing car seat.
- **Seat belt or car seat requirement ages:** Children under 18 years old must now be properly restrained in a seat belt or child restraint system (previously under 16 years old).



For more information, visit codot.gov/safety/carseats/colorado-child-passenger-safety-law-1 ♦

PLUNGE FOR A CAUSE!

JOIN THE LTPD

HELP LONE TREE OFFICERS HELP THE ATHLETES OF SPECIAL OLYMPICS



The annual Polar Plunge and a fun 5K is here, and the Lone Tree Police Department (LTPD) is inviting all residents, businesses and visitors in our community to join them in supporting Special Olympics Colorado. This thrilling event will take place on Saturday, March 29, 2025, at the Aurora Reservoir. This is your chance to take a bold dip into icy waters or hit the pavement while helping provide year-round sports training and competition for individuals with intellectual disabilities. Whether you plunge with friends, coworkers, or by yourself; run or walk; or you donate to the LTPD's team, your participation will make a meaningful difference.

Ways You Can Be a Part or Support the LTPD Team:

1. **Register as a team member on the LTPD Team.**
2. **Donate to the LTPD team of any amount.**
3. **Sponsor the LTPD or an LTPD Police Officer by donating to the team or individual registration page.**



Visit <https://go.cityoflonetree.com/polarplunge2025> (Make sure that you are on the Lone Tree Police Department team page when registering as a team member or donating).

For more information on registration, sponsorships or donating, please email Officer Meagan Chapman at Meagan.chapman@cityoflonetree.com.

The Lone Tree Police Department has partnered with Lone Tree Brewing Company on the 2025 Polar Plunge and more details will be announced soon. ♦

CITY COUNCIL ADOPTS 2023 NATIONAL ELECTRIC CODE

The City Council adopted the 2023 National Fire Protection Agency (NFPA) 70, National Electric Code (NEC) to enhance electrical safety in the community for all new construction and renovations. Effective January 1, 2025, all electrical work in the City of Lone Tree will be regulated by the new provisions of the NEC which is considered the national benchmark for safe electrical design, installation and inspection, to protect people and property from electrical hazards.

First published in 1897, the NEC has been adopted in all 50 states and is updated every three years by the NFPA ensuring the codes do not become a barrier to innovation or technology and addresses the latest electrical safety standards in the built environment. Major changes to the 2023 Code include requirement updates in Ground Fault Circuit Interrupter (GFCI) protection, Arc Fault Circuit Interrupter (AFCI) protection, surge protection, and more.

- GFCI protection for appliances has been expanded to include wall-mounted ovens, counter-mounted cooking units, clothes dryers and microwave ovens. GFCI protection is also expanded to include any cord-and plug-connected appliance in kitchens, not just on countertops.
- A GFCI update removes the distance limitation between kitchen receptacle outlets and the sink. All receptacles in kitchen now need GFCI.
- Kitchen island and peninsula receptacles located under the edge of the countertop have been removed to protect children from a pulling hazard of appliance cords that drape over the edge of the countertop.
- Surge protection devices are now required to have minimum discharge rating and expanded to include multifamily dwelling units, dormitory units, guest rooms and guest suites of hotels and motels, as well as patient sleeping rooms in nursing homes and limited care facilities.

For more information or questions please check out our website cityoflonetree.com/departments/community-development/building/
Email building@cityoflonetree.com or call 720-390-5211 ♦



CITY'S NEW JUSTICE CENTER AND PUBLIC WORKS OPERATIONS FACILITY

Conceptual Designs Revealed with Construction Beginning this Summer

The City's new Justice Center and Public Works Operations facility are progressing through the design phase and are slated to begin construction this summer (pending City Council approval and public input of both project's Site Improvement Plan (SIP), with both projects being completed in 2026.

Both facilities will be located on the land, situated on the east side of I-25, donated to the City by Coventry Development as part of the RidgeGate development. This land, situated on the east side of I-25, will host the new Justice Center, Public Works Operations facility, and be home to the future High Note Regional Park. The new facilities will provide space to support current and future staff, accommodate growth, and enable the City to deliver high quality services.

Funding for construction of both facilities (as well as an anticipated minor remodel to the municipal building) is estimated to cost \$50 million. Construction will be financed through the City's issuance of Certificates of Participation (COPs), which are planned to be paid off over 20 years based on the City's current revenue streams and reserves.

Public Works Operations Facility

Key Features: 25,000 square feet, steel frame and masonry facility, with site improvements



The project aims to create an efficient space that will house the equipment, administrative offices, and maintenance bays for public infrastructure management that will be able to accommodate the increased demands as the City grows. The improvements are designed with long-term sustainability in mind, incorporating modern, eco-friendly solutions that reduce environmental impacts. The facility will enable faster response times, better maintenance of public spaces, and improved operational efficiency. This directly benefits residents by ensuring that City roads, parks, trails, drainage, and other utilities are consistently well-maintained.



Justice Center

Key features: 38,000 square feet, steel frame facility, with site improvements

The City's Justice Center will house both the Police Department and the Municipal Court, which is relocating from the Civic Center located in a residential neighborhood to a more suitable location.

The Justice Center is set to be a key hub for the City's legal system, offering expanded facilities for community programs, courtrooms, offices, and law enforcement personnel with higher caseloads and an increased need for judicial and law enforcement services because of the City's growth. The project will provide a secure and accessible space for citizens focusing on addressing growth efficiency and public safety and security.

Watch for updates on both projects in a future edition of the Timberlines Magazine, on the City's social media channels, or visit cityoflonetree.com/projects/public-works-facility/cityoflonetree.com/projects/justice-center/ ♦



GROWING ACCORDING TO PLAN

BEYOND THE MAP - CALGARY "DISCOVERS" LONE TREE!



Lone Tree is a special place – from the way it has been carefully planned and designed, with safe, beautiful environments, to its great shopping, entertainment and amenities, to its convenient location and options for getting around. What you probably didn't know is that Lone Tree also looks special from space - using Google maps. In fact, that is exactly how a team of city planners from Calgary, Canada discovered Lone Tree.

While surfing Google maps, the Calgary team discovered that, not only is Lone Tree located directly along the region's light rail system, but the City has planned and built a community that is walkable, shoppable, and provides a mix of housing types and employment opportunities all within walking distance from one another. To learn more about the City of Lone Tree, a team of twenty-five planners from Calgary decided to take a field trip to meet with City staff and the Regional Transportation District (RTD) to take a tour and learn more about how Lone Tree collaborated with RidgeGate to design a world-class mixed-use city.



In meeting planners from a different country, Lone Tree staff had an opportunity to learn about how our sister metropolis to the north is planning and designing for growth, as well as hear a different perspective on what makes Lone Tree unique. In speaking about Lone Tree's development history, staff had an opportunity to

see Lone Tree through another planner's lens and to appreciate the community's design with a refreshed perspective.

For example, did you know that the trail and open space system between RidgeGate Circle and Lincoln Avenue was designed to integrate stormwater management into the open space system and that Belvedere Park is designed to accommodate storm overflows? Or that the Schwab campus has a community amphitheater space? Or that Lone Tree's diverse housing options include (either existing or currently under construction): 2,975 single family homes, 792 townhomes, 330 condos, 3,898 apartments, 434 senior living units (offering a variety of independent, assisted and memory care living options), and 28 supportive (and affordable) housing units to serve the future Tall Tales Ranch community? Of those homes, over 230 of them are produced by Koelbel Homes for community members seeking more affordable housing options. In addition to Koelbel, Lone Tree's housing diversity is provided by a variety of homebuilders including, but not limited to, Shea, Lokal, Thrive, Infinity, and Century.

As we welcome the new year in Lone Tree, the City's Community Development team is grateful for the opportunity to continue serving this great community and guiding its growth, consistent with the community's vision. Not only does our community provide exceptional services and amenities, but we are also recognized for exceptional community development and urban design, and that is something to celebrate and talk about. In the coming editions of Timberlines, we want to bring you community development updates that matter to you – do you want to know about where Lone Tree is growing, what projects are in the development pipeline, or learn about revitalization efforts? We'd love to hear from you – drop our team a message at planning@cityoflonetree.com. ♦



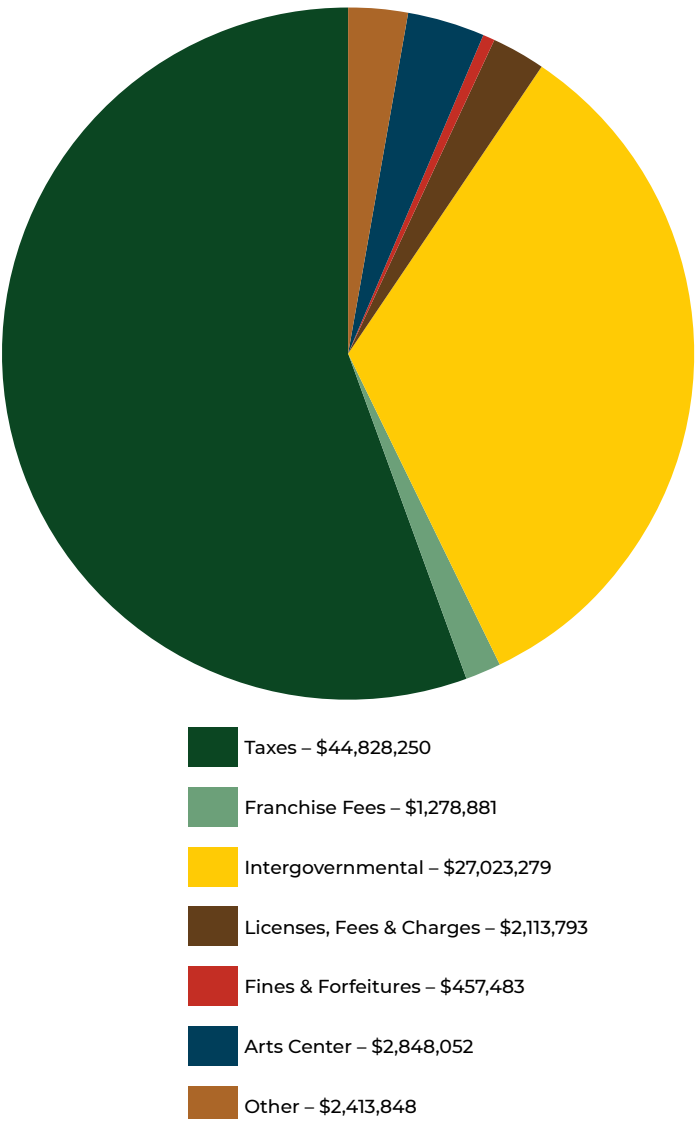
CITY COUNCIL ADOPTS 2025 BUDGET

Each year, City Council establishes priorities for the annual budget that will serve as the funding plan for policies, goals, and service levels for the City. With guidance from the City Council, the City Manager and staff, and through the leadership of the City's Finance Department, prepares the annual budget for the City's fiscal year that begins on January 1 and ends on December 31 each year.

In December 2024, the City Council formally approved the 2025 Budget. The balanced budget is focused on the City's commitment to maintain a high level of services including a strong focus on public safety, snow removal, trash and recycling collection, and street maintenance. The annual budget also prioritizes strategic planning for the future, maintaining and upgrading the City's core infrastructure, maximizing the value of prior investments, and managing both operating and capital reserves with fiscal responsibility. In addition, the 2025 budget aligns with the City's long-term financial goals, as outlined during the 2E Tax Initiative, ensuring fiscal stability for the years ahead and honoring the commitments made to the community when the initiative was passed in 2021.

As part of the 2025 Annual Budget, the City integrated initiatives, projects, and programs, in alignment with its strategic vision, to maintain its position as a national model in public safety, transportation, cultural and recreational opportunities, and a welcoming, connected community. The budget also establishes standards for the City to continue fostering innovation, maintaining a customer-focused approach, and delivering an efficient City government. This strategic philosophy is what sets the City of Lone Tree apart, making it highly desirable place to live, as well as a regional hub that attracts business investment and visitors.

Where Does the Money Come From? Summary of Revenues



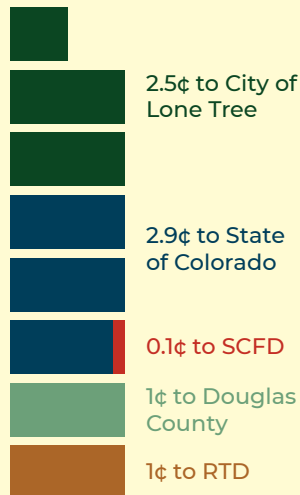
- Total budgeted revenues for all City funds are approximately \$81.0 million.
- Taxes account for approximately 55.4% of total revenues, with sales tax being the primary source of this Funding.
- The total sales and use tax rate for the City is 2.5 percent. This comparatively low sales tax rate makes the City an attractive destination for consumers to visit and shop. The following table compares the City's sales tax rate with those of other communities along the Front Range.

Lone Tree businesses generate over \$1.5 billion in taxable sales, fueling essential services and contributing to the City's status as a thriving regional destination for residents, businesses, and visitors.

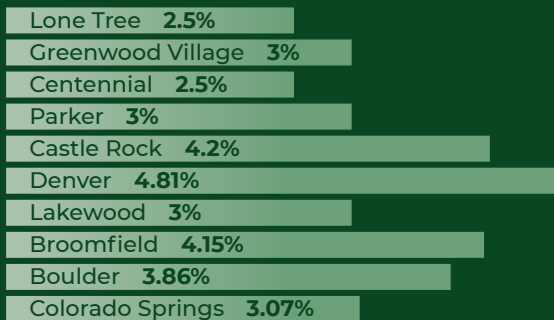
To learn more, visit:
go.cityoflonetree.com/budgetbook2025

Sales Tax Distribution

7.5¢ on every dollar

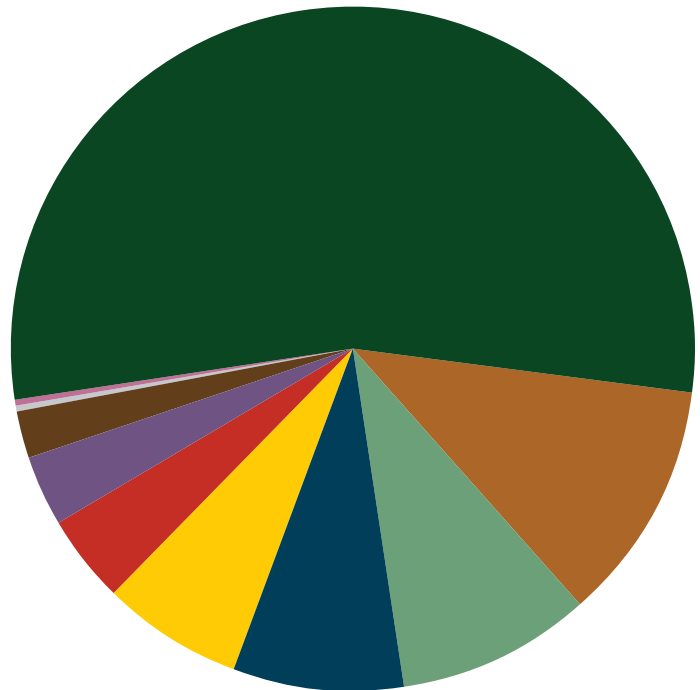


Local Sales Tax Rate Comparison



- Sales tax projections for 2025 are based on a conservative approach, incorporating 2024 trends along with the effects of new store openings and closures, leading to a modest anticipated growth rate of 1.5% in the sales tax base.
- The City does not assess a mill levy for the collection of property taxes like other cities impose.
- The budget includes an increase to use tax-building materials due to anticipated new development.

Where Does the Money Go? Summary of Expenditures



- Total budgeted expenditures for all City funds in 2025 are approximately \$117.2 million. These expenditures are to be funded by projected 2025 revenues, along with accumulated fund balances from prior years.
- Leveraging partnerships remains a critical strategy for the City to fund large capital projects and will continue receiving this support in 2025.
- Approximately 30% of total capital project funding has been secured through partnerships and grants, 50% from COPs for the design and construction of new City facilities, while the remaining 20% will be funded by the City.

Key capital improvement projects for 2025

- Annual Street Overlay and Traffic Signals
- Advancing Lincoln Avenue
- C-470 Trail Connection to County Line RTD Light Rail Station
- Groundbreaking and initial construction of the Justice Center, Public Works Facility expansion, and High Note Regional Park
- Storm Sewer and Drainage Improvements
- Bikeway Connections and Transportation Improvements

LONE TREE CAPITAL IMPROVEMENT PROGRAM 2025



Lone Tree has an annual Capital Improvement Program (CIP), as part of the City's annual budget process, for the development, repair, and enhancement of major infrastructure and City facilities. These projects typically involve improvements to roads, bridges, public buildings, and the transportation network, including trails. Provided below are three CIP projects planned in 2025 in Lone Tree:

Havana Street Bikeway Project

Cost: To Be Determined

Location: Havana Street Between Rail Way and to the southern limit of the City of Lone Tree

Anticipated Start/End Dates: March 2025/May 2026

This project is funded by the Denver Regional Council of Government (DRCOG) Tip Funded program and the Rampart Range Metro District (RRMD) and managed by Lone Tree. The project includes the installation of new bike lanes and a new traffic signal at Rail Way to transition the bikeway from on-street to off-street side paths. The Havana Street Bikeway will provide a critical missing link in the bikeway network in Lone Tree improving safety for users to cross the street and access the RTD light rail station.

Parkway Drive and County Line Traffic Signalization

Cost: \$1,000,000 (construction only; design costs were included in 2024)

Location: Intersection of County Line Road and Parkway Drive

Anticipated Start/End Dates: May 2025/November 2025

This signalization project includes upgrades to the existing span wire traffic signal at the intersection of

County Line Road and Parkway Drive. This intersection improvement project will provide numerous safety enhancements for drivers and pedestrians including upgrades to all traffic signal components, pedestrian crossings, striping and crosswalk, and pedestrian curb ramps.

C-470 Trail Connection to County Line RTD Station

Cost: \$3,620,000

Location: Park Meadows Center Drive from C470 Trail to County Line RTD Station

Anticipated Start/End Dates: February 2024/June 2025

This multi-year project, funded by the City of Lone Tree, Douglas County, Park Meadows Metro District, Southeast Public Improvement Metropolitan District (SPIMD), and DRCOG Safer Streets program, will include a trail connector adjacent to the northwest corner of the C-470/I-25 interchange, to the County Line RTD station, adjacent to the I-25 highway corridor, providing a new grade-separated bikeway link between Highlands Ranch, Centennial, Lone Tree, Meridian Business Park, Douglas County, and RTD's County Line Rail Station. The project includes secure bicycle parking adjacent to the light rail station with video surveillance provided by the Lone Tree Police Department. An existing traffic signal at the intersection of Park Meadows Center Drive will be enhanced with new crosswalks, Americans with Disabilities (ADA) ramps, and signal actuation, to accommodate the grade-separated bikeway connection. The trail will extend along Park Meadows Center Drive to the RTD light rail station, remaining grade-separated to avoid conflicts within the parking lot of the Park Meadows Retail Resort. ♦

CELEBRATING LONE TREE COMMUNITY SPIRIT MERRY DAYS





STUDENTS EXPERIENCE ENRICHING PERFORMANCES AT LONE TREE ARTS CENTER

Students from Douglas County and school districts from around Colorado visit the Lone Tree Arts Center, where they experience a diverse array of performances designed to educate and inspire. Among the highlights in 2024 was Doktor Kaboom, a dynamic show that uses humor and exciting science experiments to engage young minds. This performance not only entertains but also fosters a love for science and exploration among students.

Another captivating offering was *Frindle*, a production focused on promoting literacy. Based on the popular children's book, this performance encourages students to think creatively about language and the power of words, enriching their appreciation for reading and storytelling.

Additionally, students were enthralled by a presentation from *National Geographic* photographer Kilii Yüyan. Known for his striking images of the Arctic, Yüyan shared his experiences and insights, shedding light on the region's unique landscapes and cultures. His work emphasizes the importance of environmental awareness and cultural understanding.

Moving into 2025, the Arts Center will continue to inspire students with field trip opportunities featuring Main Stage performers such as YAMATO: Drummers of Japan and Scrap Arts. In addition, the Arts Center connects to existing curriculum and supports teachers with the opportunity for visits from staff in advance of their field trip as well as lesson plans connected to curriculum.

These performances at the Lone Tree Arts Center provide students with invaluable educational experiences, blending entertainment with learning. By exposing students to science, literacy, and global awareness, the Arts Center plays a crucial role in broadening young people's horizons and inspiring future explorations. ♦



NEW INTERACTIVE SCULPTURE UNVEILED AT LONE TREE ARTS CENTER



In December, the most recent addition to public art displays in the City of Lone Tree was unveiled. *Aeolian*, a 14-foot-tall sculpture crafted out of carbon steel and CNC plasma, was placed in front of the Lone Tree Arts Center with an opportunity for visitors to interact with the piece.

Crafted with the figure of a hummingbird at the top, the sculpture depicts the bird collecting nectar out of the hanging bench which has been designed to resemble a poppy flower. As an interactive sculpture, passersby will have the chance to leisurely swing on the bench. The piece is named for the sound or musical tone produced by the movement of air, such as when a hummingbird moves its wings.

Selected by the City of Lone Tree Arts Commission through a competitive application process, *Aeolian* will be on display temporarily for approximately one year. Sculptor Mitch Hoffman of Model Metal created the design and worked with his team Katy McClure, Beck Hargrove, James Venable, and Jake Barbal to fabricate the work.

Be sure to check out this new addition to the public art landscape of Lone Tree and experience art up close! ♦



UPCOMING EVENTS CALENDAR



Changemaker Talks: WILD HOPE
Rethinking Our Relationship with Nature with
Photographer Ami Vitale
February 27



Sweet Honey in the Rock
March 1



International Guitar Night
March 8



YAMATO: The Drummers of Japan
March 12



Parsons Dance
March 16



Ken Ludwig's Baskerville:
A Sherlock Holmes Mystery
April 3 — 13

WINTER COMMISSIONER'S CHOICE EXHIBITION EXPLORES CULTURAL PRESERVATION

Beginning in the late 1800s and continuing over the next thirty years, Edward Sheriff Curtis took over 40,000 images and recorded rare ethnographic information from over eighty American Indian tribal groups, ranging from the Eskimo or Inuit people of the far north to the Hopi people of the Southwest.

Thought to be lost to time, one of the original sets of photographs was stored in a vault at the University of Denver, protected from deterioration since 1938. These photographs were discovered by craftsman and Native artist Paul Unks who undertook a project to preserve the legacy of these images in their original glory.

Now, starting in January of 2025 as part of the Winter Commissioner's Choice Exhibition at the Lone Tree Arts Center, Unks, owner of Mountain Hawk Fine Arts, will display a collection of prints that capture the spirit of Curtis' original photos with the details impeccably intact.

Unks, whose printing studio takes its name from his given Native American name, "Little Mountain Hawk," spent seven years learning the craft of photogravure plate and print making, the same process that Curtis would have used to produce his photos as they were taken in the late 1800s. By using this meticulous process, Unks showcases and enhances the magical sense of light and depth of Curtis' original photos.

More than an act of remarkable artistry, this collection is a preservation of legacy. This exhibition brings history into the light through remarkable photographs that have been painstakingly recreated using traditional techniques.

Now on display until March 23, be sure to check out this exhibition at the Lone Tree Arts Center. ♦



C-470 TRAIL CONNECTOR UPDATE

LINKING TRAILS, TRANSIT, AND COMMUNITY IN LONE TREE



The C-470 Trail Connector to RTD Park Meadows Light Rail Station project is making steady progress toward enhancing connectivity and safety for pedestrians and cyclists. This initiative aims to establish a seamless link between the C-470 Regional Trail, the RTD County Line and Park Meadows Light Rail Stations, and the Park Meadows Retail Resort, creating an integrated and sustainable transportation network.

Project Highlights

- The project features a dedicated bikeway designed to provide easy and safe access to regional transit, employment centers, and retail destinations.
- Groundbreaking occurred in August 2024, with significant progress achieved, including the initial construction of two or three retaining walls, storm sewer installations, and sidewalk preparations.
- In 2025, construction will continue with the completion of all retaining walls, sidewalk installations, landscaping, and the addition of key amenities such as a shade structure and bike racks.

Regional Collaboration

This transformative project is funded by the Colorado Department of Transportation's Safer Main Streets Program, alongside contributions from the City of Lone Tree, Douglas County, Denver South, and the Park Meadows Metro District.

Correction Note: A prior article inadvertently listed Park Meadows Mall as a funding partner. The correct funding partner is the Park Meadows Metro District.

Anticipated Completion

The project is on track to be completed by summer 2025. Once finished, it will significantly enhance the region's connectivity and safety, promoting active transportation options by linking major trails, transit hubs, and vibrant destinations.

For project updates, visit cityoflonetree.com/projects or contact Angela Hager, Senior Project Engineer, at angela.hager@cityoflonetree.com. ♦

MAJOR DRAINAGE IMPROVEMENT PROJECT ON LINCOLN AVENUE COMPLETED

This fall, a major drainage improvement project was completed to line an existing corrugated metal pipe (CMP) beneath Lincoln Avenue. The work involved the rehabilitation of a CMP that aged and deteriorated. CMP was once a widely used material for underground conveyance systems for its relative low cost for the given strength of the pipe, however, as these systems aged, the stormwater community is required to rehabilitate these systems.

The scope of work for the project included the use of a trenchless repair solution called Cured In Place Pipe (CIPP) for the existing 265 foot long, 84" CMP beneath Lincoln Avenue. CIPP uses a felt liner, that gets pushed through the pipe and is expanded with hot steam to cure the felt liner into a durable and strong new pipe taking the exact shape of the existing pipe. Using a trenchless repair option mitigates the overall effect on the surrounding job site such as avoiding closing an entire roadway for weeks to months to excavate and install a new pipe. This gives trenchless solutions a distinct advantage over traditional repairs where a trench is required to be excavated. As a result of this project, the liner will enhance the pipes conveyance performance and extend the infrastructures overall lifespan with minimal future maintenance outside of routine cleanings.

The City plans to focus on enhancing, repairing, and replacing CMP systems throughout the City annually. The cost of the project was \$560,000.

For more information, please contact Stormwater Engineer Duncan Rady at duncan.rady@cityoflonetree.com or call 303-662-8112. ♦



ACRES GREEN DRIVE AND COUNTY LINE ROAD SIGNAL REPLACEMENT PROJECT COMPLETED

As part of Lone Tree's effort to creating a safer and more accessible community for all residents and visitors, the Acres Green and County Line Road Signal Replacement project was completed and involved substantial upgrades to the traffic infrastructure to enhance traffic safety and operational efficiency for both vehicles and pedestrians.

The project included reconstruction of the traffic signal system, including mast arms and signal heads, for improved visibility and alignment. Mast arms provide a rigid and visually appealing mounting for signal heads, eliminate overhead wires, and ensure less movement in windy conditions, contributing to a cleaner and more modern streetscape.

In addition, pedestrian ramps were reconstructed to meet updated Americans with Disabilities (ADA) standards, including the replacement of pedestrian pushbuttons with accessible pedestrian signals (APS) featuring auditory and tactile messaging resulting in enhanced safety, reliability, and accessibility.

As part of the City's strategic plan, all span wire intersections are being replaced with mast arms for their superior durability, aesthetics, and reduced maintenance needs. Upon completion of this project, only two span wire intersections remain in the City, both slated for replacement in the coming years.

This project was partially funded through the Highway Safety Improvement Program (HSIP), which supports initiatives to reduce traffic fatalities and serious injuries on public roads. The total project cost of \$829,723 was jointly funded by the City of Lone Tree and HSIP funding administered by the Colorado Department of Transportation (CDOT).

For project updates, visit cityoflonetree.com/projects or contact Angela Hager, Senior Project Engineer, at angela.hager@cityoflonetree.com. ♦



GET READY FOR 2025

SAVE THE DATES FOR EXCITING CITY EVENTS

THE FUN STARTS IN MAY THROUGH DECEMBER

Backyard Beats: Love Local May 24 – Sweetwater Park



Independence Day Celebration July 4 – Prairie Sky Park



Backyard Beats: Southern Street Eats August 16 – Sweetwater Park



Wag n Romp September 6 Cook Creek Pool



Public Safety Open House, September 20 at Park Meadows Retail Resort



Craftoberfest October 4 Schweiger Ranch



Fall Festival October 5 Schweiger Ranch



Merry Days December 5 at Lone Tree Arts Center

REVITALIZING THE ENTERTAINMENT DISTRICT

ENHANCED TAX INCENTIVE PROGRAM TO ATTRACT BUSINESS

Since the onset of the COVID-19 pandemic, many businesses have struggled to stay afloat, leading to widespread closures. Lone Tree experienced this decline with its Entertainment District (the district) at Yosemite Street and Park Meadows Drive as foot traffic dwindled and consumer behaviors shifted causing vacancies, including the closure of the Lone Tree movie theater in 2023.

To reactivate the district with a vibrant mix of restaurants, entertainment venues, retail businesses, and similar establishments, the City launched an Enhanced Tax Incentive Program (ETIP) in 2021. This program supports the district's redevelopment efforts, aiming to stimulate the economic and social vitality of the district.

The ETIP includes a sales, construction, admissions, and lodging tax share back feature where a portion of the City's revenue from taxes collected by the business is returned to the business in the form of a financial incentive or grant. The ETIP is designed to encourage current property owners, as well as prospective tenants, to establish and maintain businesses that align with the district's vision – a dynamic place where residents and visitors may gather to dine, shop, and enjoy leisure and recreational activities. The ETIP is set to expire seven (7) years from the date during which it was initially approved by the City Council, unless at any time, the City Council can terminate or extend the program.

To date, only two businesses – Jack's at Lone Tree, and 303 Sports Grill, both under construction in the district and scheduled to open in 2025, have applied and been approved for the ETIP grant.

The ETIP is just one of several initiatives the City has launched to encourage business growth and reinvestment in the district. Key efforts include the creation of the Lone Tree Business Improvement District (BID), the establishment of the Lone Tree Urban Renewal Authority (LTURA), and the purchase and demolition of the former Treo Property at 9070 Maximus Drive. Combined with the City's active business recruitment efforts, these initiatives are aimed at contributing to the transformation of Lone Tree's Entertainment District into an exciting and thriving destination.

For more information or to apply for the ETIP, visit cityoflonetree.com/departments/economic-development/ or contact Jeff Holwell, Director of Economic Development and Public Affairs, at jeff.holwell@cityoflonetree.com or 303-708-1818. ♦



Welcome

NEW LONE TREE BUSINESSES

NOVEMBER

Bare Skin Aesthetics

Salon

10005 S Commons St. Suite 150

Eye Origin

Photography

8401 Park Meadows Center Dr

Ichiban Catering Service

Food Industries

Residential Based

Woolly Socks

Retail Sales

8401 Park Meadows Center Dr

DECEMBER

Ikigai Bodyworks

Massage Therapist

10535 Park Meadows Blvd #301

Na Hoku - Hawaii's Finest Jewelers Since 1924

Retail Sales

8401 Park Meadows Center Dr, Space 1130

Signature Designs Kitchen Bath & Interiors

Interior Design

10185 Park Meadows Dr, Suite 452



RIBBON CUTTINGS AND GRAND OPENINGS

The Booty Shop

9500 Heritage Hills Circle, #200

The Booty Shop is Lone Tree's go-to Lagree fitness studio, offering a high-intensity, low-impact workout that strengthens, tones, and transforms the body. Classes, powered by state-of-the-art Mini Pro reformers, are designed to improve core stability, enhance flexibility, and build full-body strength. Beyond the workout, they're proud to foster an uplifting and inclusive community where clients feel supported and empowered to reach their goals. Whether you're new to fitness or a seasoned enthusiast, The Booty Shop provides an exceptional experience that will leave you feeling stronger, more confident, and part of an amazing community. **Visit thebootyshop.co**

Park Meadows Retail Resort New Dining Hall

8401 Park Meadows Center Drive

The refreshed dining hall at Park Meadows, completed in November 2024, captures a modern, luxurious mountain lodge ambiance consistent with the center's signature design. The renovation showcases elegant seating arrangements with natural wood accents, marble-topped tables, and intricate tile flooring that adds a touch of sophistication. Warm wood tones, soft lighting, and comfortable upholstered seating enhance the inviting atmosphere. A family-friendly play area with interactive wooden panels integrates seamlessly, ensuring the space remains both functional and stylish—a perfect blend of contemporary comfort and mountain lodge charm. **Visit parkmeadows.com**



LONE TREE BUSINESS FEATURE

Vibe Foods

9500 Heritage Hills Circle, #100

lovevibefoods.com



In 1995, Mark and Shannon Weston settled their family in Lone Tree, and later were inspired by a vision to bring clean, nourishing food to their community. What began as a small dream has since blossomed into something greater – a mission-driven business that resonates deeply with those that it serves. Vibe Foods, founded in Lone Tree in 2017, is a testament to the Westons' commitment to both quality food and a strong sense of connection with their customers.

When the Westons' opened their first store in Lone Tree, they admit they had no clue what they were doing. But they knew one thing for sure: they wanted to make a difference. Their journey into food and wellness started years earlier, when their youngest son faced unexplained health challenges. At the time, the solutions offered were not going to work for him, as no attention was being paid to what might be causing the issues. Desperate for answers, they dove into the world of food and discovered that his struggles were directly

linked to what he was eating. By eliminating harmful ingredients and focusing on clean, nutrient-dense foods, his health was restored. Since then, he's been thriving in every way. That life-changing experience mobilized the Westons' to learn everything about food and how it impacts the human body, planting the seed for what would become Vibe Foods.

As longtime residents of Lone Tree and raising their four children here, the Westons' have deep roots in this community. They've watched Lone Tree grow and change, and when they opened the doors to their first Vibe Foods store, it was more than a business—it was an extension of their home. At Vibe Foods, the shelves are filled with organic juices, bone broths, superfood bowls, paleo baked goods, and more—all meticulously crafted without chemicals, gluten, refined/processed sugar, or unnecessary additives. Every ingredient is vetted for quality because the Westons' believe that foods should heal and nourish.



What makes Vibe Foods truly special is its customers as many have been customers from the very beginning. They're more than patrons; they're family. Whether it's celebrating a milestone, sharing health tips, or catching up on life, the relationships are the heartbeat of their business.

Today, as Vibe Foods grows, the Westons' are proud to have maintained the same passion and standards that defined their business from the start. They continue their mission to make clean, healing food accessible, while staying true to the values that built their first store in Lone Tree. Vibe Foods has five locations, including Lone Tree, Littleton, Parker and Memphis, Tennessee, and plans are underway for continued growth to share their passion with many more. They are excited to continuing nourishing families, friends, and neighbors for years to come and living VIBErantly together! ♦





EST. 1874

SCHWEIGER RANCH



Schweiger Ranch, one of Lone Tree's most notable historic landmarks, celebrates its 150-year anniversary this year. Nestled on 38 acres in RidgeGate, this historic treasure takes us back generations to another era—when the pioneers settled the area in the late 1800s. Schweiger Ranch was homesteaded in 1874 by three brothers from Austria. The Schweiger family grew over generations and thrived on the ranch for nearly a century. Today, Schweiger Ranch stands as a designated Douglas County historic landmark, meticulously preserved and restored as a living history open-air museum complete with a treasure trove of fascinating historic elements.



During the early years, the three Schweiger brothers along with their father and mother homesteaded the land together. Around December 1879 their mother passed away and the sons decided they needed a woman's help around the ranch. According to lore, the boys drew straws to determine who would get married. John Schweiger drew the short straw and began looking for a wife. He soon married Anna Scheider, a German immigrant in 1885 and together they had seven children.

It is believed the current house, barn, stable and loafing shed were built around 1890 to accommodate the growing Schweiger family. Slowly over time, John and his family cultivated their land with oats, corn, wheat and rye, and ranched their land with cattle, hogs and chickens. They grew their ranch from the original 38 acres to nearly 4,000 acres.

Fast forward many decades, after the ranch had changed hands and the ranch buildings fell into disrepair. RidgeGate's master planned developer, Coventry Development, saw a unique opportunity in Schweiger Ranch to create a cultural and educational facility for the benefit of Lone Tree and Douglas County residents, as well as the region. In 2003, Coventry began the master planning and visioning process to preserve Schweiger Ranch in an environment where the public could learn about early ranching life and bridge the past to the present.

Coventry approached Douglas County to designate Schweiger Ranch as a historic landmark. In 2004, historic landmark status was granted by Douglas County. In 2007, Coventry formed the Schweiger Ranch Foundation and the original 38 acres of land was donated to the foundation by the landowner, RidgeGate





Investments. This allowed Schweiger Ranch Foundation to seek grants from the Colorado State Historical Fund, and with grant cash matches from the City of Lone Tree and Rampart Range Metropolitan District, to begin restoring and preserving the ranch buildings to their historic condition.

In 2008, Schweiger Ranch Foundation received its first State Historical Fund grant to save the barn which was near collapse. In 2010, another State Historical Fund grant was received to restore the house, to its condition in 1920, the silo and the stable. In 2014 and 2015, the State granted funds for the complete restoration of the chicken coop, loafing shed (which had collapsed), tractor shed and corral. Restoration work under the State Historical Fund was completed in early 2016 after \$1,000,000 in total was invested into the restoration work; returning the five-acre homestead to its former glory and earning Schweiger Ranch Foundation the 2017 Stephen H. Hart Award for Historic Preservation from History Colorado for its care of the ranch.

Today, the Schweiger Ranch is Lone Tree's only protected historic landmark. Schweiger Ranch provides diverse, recreational and educational opportunities to foster an understanding and enjoyment of the area's cultural and natural heritage through displays, demonstrations, interpretive programs and special events for the greater community.



The ranch is open seasonally to the public for guided and self-guided tours, as well as many other educational programs including nature hikes, storytelling performances around the campfire, its signature Austrian Christmas event, Lone Tree's CraftoberFest and Fall Festival.



In November, the Lone Tree City Council recognized the 150th anniversary of the settlement of Schweiger Ranch. Left to right: Councilmember Mike Parr, Mayor Pro Tem Jay Carpenter, Board President Keith Simon, Mayor Marissa Harmon, Executive Director Elizabeth Matthews, and Councilmembers Mike Anderson and Alecia Brown.

Check schweigerranch.org for the latest hours and events. ♦

STAY CONNECTED WITH THE CITY OF LONE TREE

Keep up with City updates, news, and important information you need to know about living and working in the City. Your participation and feedback can play an active role in shaping the future of our community.



Visit Our
Website
cityoflonetree.com

Follow Us On Social Media



Facebook
City of Lone Tree
Government



Instagram
[@cityoflonetree](https://www.instagram.com/cityoflonetree)



X (Twitter)
[@cityoflonetree](https://twitter.com/cityoflonetree)



Nextdoor
City of Lone Tree



LinkedIn
City of Lone
Tree, CO

Receive our Monthly E-Timberlines via email
Go.cityoflonetree.com/send-me-timberlines

Get SMS Texts from the City via TextmyGov
Go.cityoflonetree.com/city-text-signup