

Timberline

THE OFFICIAL CITY OF LONE TREE MAGAZINE | ISSUE 112

CUE THE CRESCENDO

LONE TREE'S HIGH NOTE PARK
BEGINS TO TAKE SHAPE



IN THIS ISSUE:

High Note
Regional Park

Celebrating
30 Years

Lone Tree
Elevated

30th Anniversary
Pancake Breakfast



Minutes with Mayor Harmon

Dear Residents and Businesses of Lone Tree,

Spring in Lone Tree brings a fresh energy you can feel all around—coffee shops and restaurant patios buzzing with conversation, trails filled with neighbors walking, running, and biking, parks alive with the sounds of kids playing and families spending time together and a sense of connection that comes with longer days and warmer weather. It's a wonderful time to be out and about in our city, and I'm excited to share a few updates and reflections with you in this issue of Timberlines.

For this issue of Timberlines, I wanted to share my thoughts on a few items that come to mind that I feel are important to mention.

Fatal Pedestrian Accident in Lone Tree

I wanted to take the time to express our sincere condolences to the family affected by the fatal pedestrian accident that occurred in Lone Tree on February 26, 2025, at the intersection of Lincoln Avenue and Lone Tree Parkway. This tragic accident was investigated thoroughly by our Police Department and an arrest was made on the driver on March 6, 2025. As we move forward as a community, I want to reiterate to everyone the City of Lone Tree, City Council and staff have a deep commitment to the safety of our community and make it a top priority to ensure our roadways are safe for everyone, including pedestrians and bicyclists.

Both our Police and Public Works departments play essential roles in keeping our roads safe. Whether it's through traffic enforcement, outreach with homeowners' associations and neighborhoods, or implementing new signage, lighting, pavement markings, or traffic control

devices to name a few, pedestrians are always identified as key stakeholders when the City plans and designs new roads, sidewalks or trail projects; considers development proposals, or further considers capital improvement projects to enhance our transportation system.

The safety of our roadways is a shared responsibility that also requires the cooperation of everyone – drivers, pedestrians, and cyclists. As drivers, we all must follow traffic laws, watch signage, and obey traffic signals. Pedestrians should always cross at designated crosswalks and stay alert to approaching traffic. In addition, cyclists should follow traffic signals, use bike lanes where available, and be cautious when navigating intersections. By staying focused and mindful of each other, we can all contribute to safer streets for everyone.

As citizens of Lone Tree, please continue to be involved and share your input on current and future projects, as well as let your voices be heard about any safety issues that cause you concern. We value your feedback and collaboration in ensuring our community remains safe for everyone.

30 Years, Pancake Breakfast and Day of Service

This year is exciting as we kick off the City's 30th Anniversary celebration in May with our first community event! We hope everyone will join us at our pancake breakfast on Saturday, May 3 at the Lone Tree Arts Center. Learn more about this event on page 14 and be sure to RSVP for you, your family and friends. Community spirit is what makes Lone Tree special, and it's been the foundation of this City since its inception 30 years

TABLE OF CONTENTS



SRO Kris Larson teaches students about safety at Ambleside School.

ago. I look forward to welcoming residents, local businesses, and visitors as we come together to enjoy breakfast, connect as a community, and celebrate the beautiful City we all love.

Trash and Recycling Service Transition

The City Council, City Manager and staff would like to extend our appreciation to all residents (who receive free trash and recycling from the City) for your patience as our Public Works Department and the City's trash contractor, Waste Connections implemented the new trash program in April. This was a significant endeavor requiring the delivery and pick up of nearly 20,000 new and old trash and recycling containers. Staff worked with Waste Connections to ensure residents were well informed and available to provide any assistance. Although the transition wasn't perfect, as there were some households that required assistance, we appreciate your patience as staff and Waste Connections continue to work through your requests. If you have any questions about the new trash program, please refer to page 16 that provides follow up information on the transition.

With Lone Tree Pride,

Marissa Harmon

Mayor
City of Lone Tree



Mayor and City Council	4
Top Stories	5
City Council Business	17
Police and Public Safety	20
Government	29
Celebrating Lone Tree Community Spirit	36
Upcoming City Events	37
Lone Tree Arts Center	38
Transportation and Mobility	44
Economic Prosperity	46
Business Feature	48
Community Spotlight	50

MEET YOUR LONE TREE CITY COUNCIL



**Mayor
Marissa Harmon**
At-large
Ph: (720) 582-3586
marissa.harmon@cityoflonetree.com



**Mayor Pro Tem
Jay Carpenter**
District 1
Ph: (720) 840-4286
jay.carpenter@cityoflonetree.com



**Councilmember
Mike Parr**
District 1
Ph: (303) 241-4023
mike.parr@cityoflonetree.com



**Councilmember
Alecia Brown**
District 2
Ph: (303) 968-8660
alecia.brown@cityoflonetree.com



**Councilmember
Mike Anderson**
District 2
Ph: (303) 495-8231
mike.anderson@cityoflonetree.com

LONE TREE CITY COUNCIL MEETINGS

All Lone Tree City Council meetings are open to the public and are held on the first and third Tuesdays of the month at the Lone Tree Civic Center, 8527 Lone Tree Parkway. All study sessions begin at 4:30 p.m., and regular meetings at 7 p.m. Agendas for upcoming City Council meetings are published the Friday before the Tuesday meeting.

For agendas, meeting packets, and meeting minutes, visit the City's meeting portal at cityoflonetree.civicweb.net/portal/

UPCOMING CITY COUNCIL MEETINGS

May 6	June 17
May 20	July 1
June 3	July 15



HIGH NOTE REGIONAL PARK

Designing Colorado's Next Signature Public Space



Lone Tree and South Suburban Parks and Recreation District (SSPRD) are working collaboratively to transform 80-acres along Happy Canyon Creek near I-25 and RidgeGate Parkway into High Note Regional Park, a premier regional destination creating a new central gathering place in Lone Tree and north-central Douglas County. This innovative outdoor destination will include scenic trails, open green spaces, performance areas, and interactive play zones designed to serve residents and visitors of all ages.

High Note Regional Park has long been planned for the area and was included in the vision that Lone Tree residents voted for when the land was annexed into the City in 2000. Accessible from the RidgeGate light rail station, High Note Regional Park, reflects Lone Tree's commitment to enhancing the City's quality of life by

Looking down the Challenge Hill at the new pickleball courts.



creating a new destination Lone Tree residents are proud of. It is not only envisioned as a natural retreat within the City, but also as a catalyst for economic growth – attracting tourism, supporting local businesses, and increasing property values. From large-scale events to intimate gatherings, the park will foster community connections and host concerts, farmers markets, festivals, and public art that celebrates the City's vibrant culture. Some of the most exciting features of the park include:

Bark Bar, Beer Garden, and Dog Park: A social space for pets and people, featuring a destination bar and beer

garden, shaded seating and interactive features.

The Braid: A signature promenade connecting north and south features of the park, tying together gardens, gathering spaces, and play areas with scenic pathways.

A One-Mile Fitness Loop: Meandering through the site, this loop encourages movement and supports wellness.

Festival Plaza and Amphitheater: An energized central space for outdoor concerts, cultural celebrations, and pop-up events, anchored by a restaurant, beer garden, and shaded social zones.

Family-Friendly Amenities: Inclusive playgrounds, basketball and pickleball courts, climbing structures, and multi-use athletic fields.

WHERE WE ARE IN THE PROCESS

Thanks to robust community input and vision-driven leadership, the concept design phase is now complete. The current focus is securing the necessary funding to bring this transformative project to life. Two key initiatives are underway:

1. Securing Funding for Phase One

The City of Lone Tree and South Suburban Parks and Recreation have committed \$22 million in funding for the first phase of



Community swings at the multipurpose sports field complex.

the project, along with a recently accepted grant of \$1 million from the Southeast Public Improvement Metropolitan District. Additional external funding opportunities, including applications to Douglas County and Great Outdoors Colorado (GOCO) are being pursued. The outcomes of these applications will be instrumental in shaping the scope and construction timeline for Phase One, with a goal to break ground in early 2026 to open the first phase to the public in 2027.

2. Determining a Path for Future Phases

The City remains committed to developing a funding plan for the remainder of the park. This will include exploring public-private partnerships for elements like the Bark Bar and the restaurant opportunity, along with exploring donor and fundraising opportunities.



Join us for a monthly site walk!



INTERESTED IN LEARNING MORE ABOUT HIGH NOTE REGIONAL PARK

Friends of High Note Park Public meeting

Monday, May 5, 2025, at 5:30 pm
Lone Tree Hub, 8827 Lone Tree Parkway

Friends of High Note Park is an organization made up of community members who are dedicated to supporting the development and ongoing success of High Note Regional Park by creating an inclusive, vibrant and sustainable park for Lone Tree. As a Friend of the Park, you'll have the opportunity to stay informed, provide feedback, and help shape future programming and park activation. Please visit highnotepark.org/ to RSVP for the public meeting and register to receive the latest development updates.

Community Site Walks

There's no better way to learn about the project than going out and seeing the site for yourself at one of our monthly site walks! On your scheduled day, meet at the project sign located near High Note Avenue and Lyric Street. City staff will lead a walk on the new concrete sidewalks along the perimeter of the park site. All site walks begin at 5:30 p.m. and take an hour. To register for a site walk, visit cityoflonetree.com/regionalpark/

Monday, May 5 at 5:30 pm

Thursday, June 5 at 5:30 pm

Tuesday, July 8 at 5:30 pm

Wednesday, August 6 at 5:30 pm

Monday, September 15 at 5:30 pm

Thursday, October 9 at 5:30 pm

Questions or More Information

Visit cityoflonetree.com/regionalpark or email Austin Good, Assistant City Manager at austin.good@cityoflonetree.com. ♦

*Top: New amphitheater with events lawn and festival terrace.
Bottom: New playgrounds and multipurpose sports fields.*

LONE TREE HAS A NEW COMPREHENSIVE PLAN, LONE TREE ELEVATED

Next Phase of Plan Moves Forward with Unified Development Code

In February, after an extensive two-year process, the City successfully completed the Comprehensive Plan update, *Lone Tree Elevated*, which was officially adopted by City Council in February 2025. *Lone Tree Elevated* was designed to shape the City's growth and development over the next decade and beyond, serving as a guiding document for City leaders, businesses, and residents. The plan outlines shared vision for land use, transportation, parks and open space, infrastructure, housing, economic development, the natural environment, and other topics that influence the City's growth and development, all while protecting the quality of life of the community.

Developed through a year-long community engagement effort of surveys, community events, facilitated targeted outreach, community workshops, and an open house, *Lone Tree Elevated* reflects the priorities and aspirations of the people who live and work in the City. A dedicated steering committee comprised of residents, elected officials, community leaders, and City partners, worked closely with City staff and planning consultants to ensure the plan addressed key concerns and opportunities. Input from residents played a critical role in shaping the plan's vision, goals, and strategic actions, ensuring that Lone Tree remains a vibrant, sustainable, and well-connected community now and in the future.

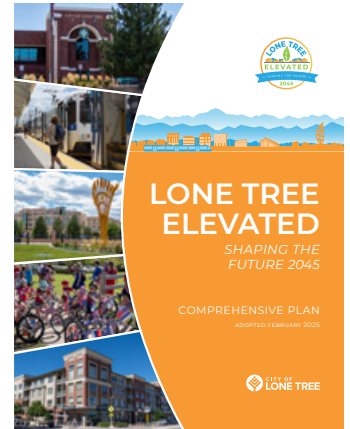
The plan is structured around a long-term community vision, along with a series of goals, objectives, and strategic actions that provide a roadmap for

decision-making. These components will help guide future projects and policies related to land use, infrastructure, mobility, housing, recreation, and economic development. Strategic actions outlined in the plan may include policy updates, public investments, partnerships, and other initiatives to ensure Lone Tree continues to thrive.

THE NEXT PHASE: Developing a Unified Development Code

With *Lone Tree Elevated* now in place, the City is shifting its focus to the next crucial step- creating a Unified Development Code (UDC). This effort will mark Lone Tree's first comprehensive update to its development regulations, modernizing and streamlining policies to better align with the City's vision for future growth—as identified in *Lone Tree Elevated*.

A Unified Development Code integrates zoning, subdivision, and land development regulations into a single, cohesive document. By consolidating these policies, the UDC will create a more user-friendly framework that simplifies processes for residents, developers, and City officials while ensuring that future growth supports the City's long-term goals. This update will help promote high-quality development, encourage economic investment, and maintain the community's high-quality of life.



To guide this effort, the City will continue working with the *Lone Tree Elevated* Steering Committee, form a technical committee, and organize community workshops. The Steering Committee, which played a key role in shaping *Lone Tree Elevated*, will continue to provide leadership and direction. Meanwhile, the Technical Committee- comprised of development experts and City staff- will offer insights on regulatory best practices. Community workshops will provide residents and businesses with opportunities to engage in the process, share feedback, and help shape the future of Lone Tree's development policies.

By adopting *Lone Tree Elevated* and launching the Unified Development Code update, Lone Tree is taking proactive steps to ensure that future development continues to elevate Lone Tree as a distinctive, economically viable place for business and visitors, while maintaining a high quality of life for residents.

Other City Projects Underway Related to *Lone Tree Elevated*

City of Lone Tree Active Transportation Plan

This plan update will identify key opportunities to significantly improve and expand the City's existing active transportation networks as well as support new facilities, policies, and guidelines. The plan envisions Lone Tree as a place with a complete, connected, and comprehensive network of trails, bikeways and walkways that provides safe, comfortable, and convenient connections to everyday destinations such as workplaces, schools, stores, and parks for people of any age or ability.

City of Lone Tree Community Wildfire Protection Plan (CWPP)

This plan will assess wildfire risk for existing developments and present recommendations for mitigating those risks. The development of the CWPP is a collaborative effort with the Colorado State Forest Service, Douglas County's Wildfire Mitigation team, South Metro Fire Rescue, South Suburban Parks and

Recreation District, and the City of Lone Tree. As the plan develops, the team will work with homeowners' associations and various stakeholders to provide opportunities for public engagement.

City of Lone Tree Public Art Master Plan

The upcoming Public Art Master Plan is a strategic plan for the development, placement, and stewardship of public art throughout the City of Lone Tree. This plan will reflect a unified vision that aligns with the City's art and cultural aspirations, helping to shape vibrant public spaces, support local and emerging artists, and foster creative expression within the community. It will establish clear goals and policies related to site selection, acquisition, maintenance, and partnerships with organizations, developers, and other stakeholders. Building off *Lone Tree Elevated*, the plan's development will include a robust public engagement process, ensuring that community voices and perspectives directly inform its direction and priorities. Through this planning effort, the City of Lone Tree aims to create a lasting and meaningful framework for expanding arts and culture to the built environment.

City of Lone Tree Urban Renewal Area Plan Implementation

The Lone Tree Entertainment District Urban Renewal Area Plan (URA Plan), completed in October 2023, outlines a strategic framework to reduce, eliminate, and prevent the spread of blight within the designated Urban Renewal Area. Developed within the tools and guidelines provided by state statute, the plan aims to stimulate redevelopment, economic growth, and private investment—utilizing mechanisms such as tax increment financing. A key component of the URA Plan is the Project Development Plan, which guides development objectives and outlines current and anticipated projects within the area. With the completion of *Lone Tree Elevated* and renewed development interests, the Project Development Plan is slated for an update to further refine redevelopment priorities and identify emerging opportunities. ♦



Scan to view the full
Comprehensive Plan



CELEBRATING 30 YEARS

A Tribute to the Leadership of Four Mayors and their City Councils



The City of Lone Tree has always been more than just a place on the map – it's a community with a high quality of life that was built on the voices of its residents. From its humble beginnings to becoming a vibrant and growing City, Lone Tree has been shaped by the dedication, vision, and leadership of those who have served the community.

Over the past 30 years, four Mayors alongside several City Councilmembers have guided this community through key moments of accomplishments, change, challenge, growth and development. Each leader has played a vital role in ensuring the values of collaboration and forward thinking continue to define Lone Tree. We celebrate these leaders and their work that has made Lone Tree the vibrant City it is today.



Mayor Jack O'Boyle
1998–2008

CITY COUNCILMEMBERS

Jane Staebell
Elton Winters
Doug Forsstrom
Gary Uhlmann
Kevin Maiman
Patricia Braden
Roger Pearson
Sharon VanRamshorst
Jim Gunning

Jack O'Boyle, Lone Tree's first mayor and the City Councilmembers with which he served, played a foundational role in shaping the City during its early years from 1998–2008. Mayor O'Boyle and the City Councilmembers guided the City through



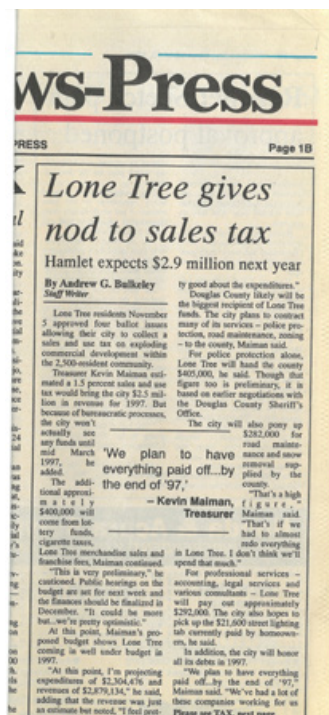
10



a transformative period from a subdivision to a City, achieving key milestones that would set the stage for its future growth and prosperity. One of the most significant accomplishments was the transition to a home rule City, granting Lone Tree control over its governance.

During this time, O'Boyle and the City Council established a framework for the City's future, focusing on the annexation of the 3,500-acre RidgeGate property, which would become a cornerstone of the City's commercial and residential growth. The City Council also attracted major businesses to the area, including the Sky

Ridge Medical Center and the opening of the Lone Tree Recreation Center. A dedicated police department was established, and O'Boyle and City Council played a key role in the annexation of Park Meadows Retail Resort that boosted the City's local economy. The work of Mayor O'Boyle and the City Councilmembers that served during this time laid the groundwork for Lone Tree's vibrant and dynamic future for many years to come.





Mayor Jim Gunning
2008–2016

CITY COUNCILMEMBERS

Sharon VanRamshorst
Patricia Braden
Susan Squyer

Jackie Millet
Harold Anderson
Kim Monson

Serving as the second mayor of Lone Tree from 2008 to 2016, Mayor Jim Gunning and City Councilmembers continued the City's growth with a focus on expanding recreational and cultural amenities while improving the transportation network in Lone Tree. One of the major accomplishments during this time was voter approval of a recreation and arts center bond by voters, paving the way for the opening of new facilities such as Cook Creek Pool and the tennis center and park at the Lone Tree Golf Club. The Lone Tree Arts Center opened its doors, further establishing the City as a cultural hub.

Mayor Gunning and the City Council worked to expand the RTD light rail system with additional light rail stations and launched the Lone Tree Link, a fixed-route circulator shuttle to provide residents, businesses, and visitors an efficient and accessible way to travel around the City. Mayor Gunning and the City Councilmembers steered Lone Tree through a period of growth and innovation, building upon the foundation for the City's continued success.

PAGE 48 • THE VILLAGER • August 5, 2010

Lone Tree offers quality living, recreation, shopping galore

SUBMITTED BY CITY OF LONE TREE

The city of Lone Tree offers so many features for a small, suburban town of Denver that it might as well be a big city. With parks and open space, unique subdivisions and an Entertainment District for every enthusiast, 98 percent of Lone Tree residents describe the quality of life as "great."

City of Lone Tree

Current Population – 10,919
Growth Rate – 1.5% in 2007
Total Land Area – 9.54 square miles
Source: Douglas County's Demographic Division, 2009
Median Household Income – \$16,308 (2000 Census)
Median Age – 38.7
Average Household Size – 2.74
Home Ownership Rate – 77%
Employment – 11,382
Employees – 581

The newest development addition to the city is RidgeGate. This unique development is a mixed-use, sustainable community with retail, dining, office and residential properties all within walking distance. The community's location provides easy access to the open space bluffs, parks and trails and will eventually incorporate three additional light rail stops.

Sky Ridge Medical Center, the first hospital to serve Douglas County, opened its doors in 2003. Sitting on more than 40 acres, the hospital has the room for structural expansion as the demand for its excellent health care and latest medical procedures continues to grow.

As a Level III Trauma Center with a helipad for AIRLIFE transports and a staff that focuses on extraordinary patient health and safety, this premier facility is fun-



Lone Tree Recreation Center

Meadows, Colorado's only "retail resort," offering 160 of the finest retailers and restaurants in America. The Vistas at Park Meadows, an outdoor shopping destination, features an elite and lush green area, superior retailers and six world-class restaurants.

The city of Lone Tree features an all-encompassing Entertainment District, including indoor skydiving, a movie theater, multiple restaurants and recreational opportunities. The Entertainment District is a 130-acre development providing easy, walkable



The Lone Tree Cultural Arts Center

arts in Lone Tree as a key piece of the community fabric. The Lone Tree Cultural Arts Center will be home to a 500-seat theater capable of hosting local and traveling performances, a large multipurpose space for smaller productions, rehearsals and hosted events, a



catering kitchen and much more.

The city has invested in parks and trails, and partnered with South Suburban Parks and Recreation in the construction of the Lone Tree Recreation Center.

Conveniently located just south of Park Meadows, the Neighborhood Library at Lone Tree offers a concentrated scope of services, including multiple copies of current popular materials, comfortable reading areas, fast Internet services and full access to all the Library District's catalog holdings.

The light rail was extended to the Lone Tree community, with the first two stops at Park Meadows and Lincoln Avenue. Three

PAGE 38 • THE VILLAGER • August 12, 2010



...continued



Mayor Jackie Millet
2016–2024

CITY COUNCILMEMBERS

Susan Squyer
Cathie Frazzini
Jay Carpenter
Wynne Shaw
Harold Anderson
Mike Anderson
Marissa Harmon

Jackie Millet, serving as Mayor from 2016 to 2024, along with her City Councilmembers guided Lone Tree through a decade marked by significant growth, strategic investments, and resilience in the face of unprecedented challenges.

During this tenure, Mayor Millet and the City Council prioritized partnerships, evidence based-decision making, proactive infrastructure development, and public safety. The City established a robust multimodal transportation network with substantial investments in light rail, the Link on Demand Service, road improvements, and pedestrian and bike enhancements.



Major employers such as Charles Schwab, Cochlear Americas, and Kiewit established a strong presence contributing to the City's economic vitality. Millet and City Councilmembers also led the City through the challenges of the Covid-19 pandemic, ensuring that Lone Tree emerged stronger and more resilient. The City's housing options expanded with qualified affordable rental units and the return of condo developments.

In addition, Mayor Millet's City Council is credited with the creation of a Youth Commission, Teen Court, and a Living and Aging Well Commission to expand outreach with citizens. Together, with the City Council, Millet raised the profile of Lone Tree from an outer Denver suburb to a forward-thinking community adding to the roadmap for a brighter and more prosperous future for the City.

RTD's newest line in southeast Denver metro will power development for years to come

Lone Tree Mayor Jackie Millet said promise of light rail brought hospital, Charles Schwab to town



1 of 6
A light rail stop at the Lone Tree Town Center station on May 14, 2019. RTD will open the E, R, and N line extension Friday, May 17, 2019.



Mayor Marissa Harmon
Elected in 2024

CITY COUNCIL MEMBERS

Jay Carpenter
Mike Anderson
Mike Parr
Alecia Brown

Elected as the fourth mayor of Lone Tree in 2024, Mayor Marissa Harmon and City Council bring a fresh vision focused on building a stronger community, fostering economic growth, and enhancing the quality of life of Lone Tree. A key focus of Mayor Harmon and City Council is revitalizing the City's Entertainment District to make this area become the thriving and exciting heart of Lone Tree for the future.

Mayor Harmon and the City Council will see the City through the groundbreaking of the City's new Justice Center and Public Works Operations Facility, as well as the opening of new businesses currently under construction in the City. Working to advance the development of High Note Park as well as commercial, retail and residential projects in RidgeGate East along RidgeGate Parkway, east of I-25, will further drive the City's growth and be the catalyst for the development of the Lone Tree City Center. Together, the City Council will continue the journey for a future where Lone Tree continues to grow and thrive, driven by the new ideas and innovation that a new City Council brings. ♦



Lone Tree mayor addresses concerns about city construction, High Note Regional Park

By Haley Lema
November 1, 2024

Facebook LinkedIn X YouTube Email

English Español



Mayor Harmon held her first town hall as the City of Lone Tree mayor on Oct. 29 where she spoke about ongoing and upcoming projects taking place across the city. Credit: Haley Lema

MOST POPULAR ARTICLES

- Safety concerns in a Jeffco kindergarten classroom spark legal and ethical questions
- Douglas County is getting a new mega-sports complex
- Post Oak Barbecue coming to Olde Town Arvada
- Broadway to get a new underpass in Littleton
- Dr. Jeff is alive: Rumors of the Conifer veterinarian and Animal Planet star's demise are greatly exaggerated





30 Years Never Tasted So Sweet!

Date: Saturday, May 3, 2025
Time: 7:30 AM – 10:30 AM
Location: Lone Tree Arts Center
10075 Commons Street



The City of Lone Tree is turning 30 and we're sweetening the celebration with a free community pancake breakfast on Saturday, May 3.

Start your morning with hot flapjacks, sausage and fresh fruit while you mingle with your neighbors and community businesses. RSVP today and "stackup" on a morning of community fun in Lone Tree!



**Sign Up HERE
for the
Pancake Breakfast
NOW**

Fun activities for kids of all ages!

NEW LONE TREE FLAG AND MOTTO TO PROMOTE CITY PRIDE

As part of the City's 30th Anniversary, the City Council has approved a new flag and City motto: **Deep Roots, New Heights.** Much like the Colorado State flag, the design symbolizes strength, deep roots, community, and City pride. The flag incorporates the City's emblem which was adopted when the City incorporated in 1995. The green color represents the City's commitment to preserving its beautiful natural environment, while the white symbolizes the City's aspiration to reach new heights. The City motto honors the history of the City's founding members and its iconic lone tree, while also looking ahead to its future growth and exciting possibilities.

In addition to celebrating the City's 30th Anniversary with a new flag and motto, more than 10 new signs have been installed throughout Lone Tree to commemorate this monumental milestone. ♦



DOUGLAS COUNTY SLASH/MULCH SITE NOW OPEN FOR COUNTY RESIDENTS

Saturdays only through October 25, 2025

8 a.m. – 5 p.m.

1400 Caprice Drive in Castle Rock

- Drop off yard waste like tree limbs, shrubs, pinecones, grass clippings and brush with a maximum length of six feet and a maximum diameter of 12 inches.
- All loads must be covered upon arrival at the slash-mulch site.
- Free mulch available.
- **No dumping allowed Monday through Friday.**

In case of inclement weather, please call 303-663-6274 to ensure that the site will be open as scheduled.

For more information, visit:

douglas.co.us/public-works/slash-mulch-program/ ♦



RESIDENTIAL TRASH AND RECYCLING SERVICE FOR SINGLE-FAMILY HOMES

UPDATE FROM TRANSITION PROCESS

Servicing nearly 4,000 households, the City completed the last phase of the trash and recycling program earlier this month with the delivery of nearly 10,000 new trash and recycling containers, as well as the disposal of 10,000 old containers for recycling. Thanks to all residents for their cooperation and patience during this transition process.

While this phase of the trash and recycling program has been completed, the City is collaborating with Waste Connections to address any outstanding resident requests. This includes resolving issues related to incorrect containers or accommodating requests for changes to the containers residents have received.

Please call the City as follows regarding your trash and recycling services in Lone Tree or have questions about your new or old containers:

Trash Line: **720-509-1212**

Email: trash@cityoflonetree.com

Website: go.cityoflonetree.com/trash-recycling ♦

New Service Reminder Starting April 14, 2025:

Waste Connections will only pick up waste and recycling from your NEW trash containers.

Personal containers are not allowed, as Waste Connections will not empty them.

Any bags or debris left at the curb or outside of the containers will not be picked up, except during designated yard clean up months.



Residential Trash and Recycling Service for Single-Family Homes Lone Tree Spring Yard Clean-Up of Yard Waste FREE PROGRAM



Since all waste must be included in your trash containers as part of the City's renewed contract with Waste Connections that began on April 14, 2025, the City, through Waste Connections, is offering a clean-up of yard waste for residents this spring. Residents who receive free trash from the City can place their yard waste, including leaves and tree branches out with their regularly scheduled trash day for pick up only during four designated weeks in June, 2025. (The City will also be offering another clean-up event of yard waste for residents this fall, which will be announced this summer).

Designated Weeks for Spring Yard Clean-Up:

- Week of June 2
- Week of June 9
- Week of June 16
- Week of June 23

Materials Accepted for Disposal During Spring Yard Clean-Up:

- Five (5) bundles of tree branches per week. The length of branches can be no longer than four (4) feet and must be bundled together or placed into a container.
- Ten (10) bags of yard waste per week. Each bag or container should not weigh more than 40 pounds.



Questions about the Lone Tree Spring Yard Clean-Up:

Trash Line: **720-509-1212**

Email: trash@cityoflonetree.com

Website: go.cityoflonetree.com/trash-recycling

CANDIDATES ANNOUNCED FOR THE SOUTH SUBURBAN BOARD OF DIRECTORS ELECTION ON MAY 6

Thirteen individuals have filed as candidates for Board of Directors positions in South Suburban Park and Recreation District (SSPRD) May 6 election. There are three openings for four-year terms on the five-member board.

The five-member Board of Directors is elected at large, on a non-partisan basis. The Board meets on the second Wednesday evening of each month at the South Suburban Sports Complex. Additional study sessions or special meetings are called as needed. The board adopts policies related to the district's work to develop and maintain the parks, trails, and open spaces within the district's boundaries and offer a variety of recreational opportunities. The executive director of SSPRD is responsible for implementing those policies and overseeing all operations.

Voters will be instructed to vote for three candidates. The election will be a polling place election, with the option of obtaining an absentee ballot. This is a District regular election and will feature only the election of Board of Directors' candidates.

The incumbent candidates are Keith Gardner and Cathie Frazzini. However, Frazzini has elected to withdraw from the election. Pete Barrett is term limited after serving two consecutive terms (2018-2025). Board Members Pam Eller and Ken Lucas will continue to serve their terms, which are scheduled to expire in May 2027.

The order of names appearing on the ballot was picked by a lottery drawing on Wednesday, March 5 at the South Suburban Sports Complex.

The ballot order is as follows:

1. Keith Gardner
2. Joe Wilson
3. Luke Lorenz
4. Cathie Frazzini – Withdrawn from election
5. Tyler Linnebur
6. Steve Kaverman
7. Rick Pilgrim
8. Joshua N. Boone
9. Larry G. Vickerman
10. Dan Murphy
11. Jennifer Stearns
12. Elizabeth Watson
13. Richard James Welch, II

Polling Site for May 6 Election

The following Polling site for the May 6 election will be open 7am – 7pm for machine voting: South Suburban Sports Complex, 4810 East County Line Road, Littleton



Absentee Ballots Available

Applications for absentee ballots are available and may be obtained online at ssprd.org/elections or at the Administration Office, 4810 East County Line Road, Littleton, CO 80126. Applications will be accepted until the close of business at 4 pm on Tuesday, April 29, 2025. A ballot drop off box is located at Goodson Recreation Center and the South Suburban Sports Complex.

An eligible elector is a person who, on election day, is registered to vote in the State of Colorado; and either who is a resident of the District or who owns taxable real or personal property (or the spouse or civil union partner of owner) situated within the boundaries of the District, or a person who is obligated to pay taxes under a contract to purchase taxable property within the District.

To check state voter registration status or find out how to register to vote in Colorado, visit douglas.co.us/elections/. For questions regarding the SSPRD election, email elections@ssprd.org or call 303-483-7011. To view bios of candidates, ssprd.org/elections. ♦

LONE TREE PLANNING COMMISSION



From left to right: Commissioners Michelle Bechamps, Frankie Valenzuela, Vice-Chairman Jack Rohr, Julie Britti, Chairman Glenn Hertzler, and Tom Rundell. Not pictured: Commissioner Kyle Adamson

The City of Lone Tree's Planning Commission is comprised of seven citizen volunteers who are appointed by the City Council. Commissioners come from a variety of backgrounds and represent professional sectors such as architecture, real estate development, construction management, and nonprofit administration. The Planning Commission

is a recommending body that deliberates and makes recommendations to the City Council on proposed development applications and land use planning documents and regulations. Recent projects recommended for approval by the Commission include Badger Gulch Park and *Lone Tree Elevated*, the City's new comprehensive plan. ♦

LONE TREE WELCOMES NEW MUNICIPAL JUDGE JONATHAN LUCERO

At the April 1, 2025, City Council meeting, the Lone Tree City Council appointed Jonathan Lucero as Lone Tree's new municipal judge. A seventh-generation Coloradan and graduate of the University of Colorado Law School, Lucero brings a diverse legal background, including experience in criminal law, private defense, prosecution, public defense, juvenile family law, and civil defense. With seven years of judicial experience, he has served the City and County of Denver, as well as the cities of Aurora, Castle Rock, Brighton, Englewood, and Lone Tree. Lucero is also an active member of several bar associations and serves on the Board of Directors for STRIDE Community Health Centers. Outside of his work on the bench, he enjoys spending time with his wife and three children. Judge Lucero will preside over all municipal court sessions in Lone Tree. ♦



HIGHLANDS RANCH SENIOR CENTER

MEMBERSHIP OPEN TO LONE TREE RESIDENTS

The Highlands Ranch Senior Center (HRSC) celebrated its grand opening this past January by the Highlands Ranch Metro District. The newly built 22,000-square-foot building, located at 200 E. Highlands Ranch Parkway in Highlands Ranch, offers a variety of programs and activities for people ages 55 and older. Such opportunities include fitness classes designed to accommodate all ability levels and promote health and wellness; health and community resource programming that educates, inspires and prepares older adults to live and age well; and life-long learning and socialization opportunities through enrichment activities, including gardening, art, technology assistance, daily games, bingo, trips and social events. The Center also offers social services information, resources and referrals.

The facility features an expansive lobby, a multi-purpose room, three activity rooms, a kitchen for events and cooking classes, fitness room, large patio with two bocce ball courts, and a satellite office for Douglas County Human Services on the west side of the building. Membership is exclusive to people 55 years or older with annual membership fees of \$60 for Highlands Ranch residents and \$72 for non-residents. Day passes are also available.

The senior center features rooms that are available for community use on weekday evenings and weekends. For more information, contact Jill Hall, Senior Services Manager, at jhall@highlandsranch.org or 720-468-4820.

The need for a senior center in Highlands Ranch stemmed from anticipated growth trends of the 65+ population in Douglas County that grew by 153% between 2010 and 2022. From 2020 to 2030, it is expected to grow an additional 36.4%.

To learn more, visit highlandsranch.org/seniorcenter, email seniorcenterinfo@highlandsranch.org or call 303-791-2416. ♦



LONE TREE ARTS CENTER FUND BOARD MEMBER APPOINTMENTS



Keesha Pfeiffer
Cochlear Americas



Chris Stolzer
Kiewit Building Group

LONE TREE POLICE RAISE \$31K FOR SPECIAL OLYMPICS AT POLAR PLUNGE

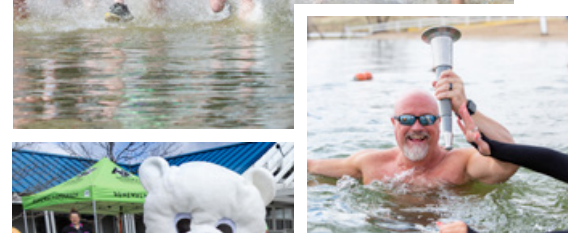


In a remarkable display of community support, the Lone Tree Police, joined by City employees, residents and members of the business community, participated in the annual Polar Plunge at the Aurora Reservoir on March 29. Together, they raised over \$31,000 for Special Olympics athletes. Nearly 60 members of Lone Tree's team braved the frigid waters, making a meaningful impact on the lives of individuals with intellectual disabilities. Their fundraising efforts earned them first place out of 75 teams participating in this year's Polar Plunge, surpassing the team's fundraising efforts last year of \$22,000, setting a record for the department. Thanks to the efforts of Lone Tree Police Department, 119 athletes will be provided with sports trainings and competitions, leadership opportunities, and health screenings for one year!



The Lone Tree Police Department would like to extend its appreciation to everyone that donated, including the following businesses:

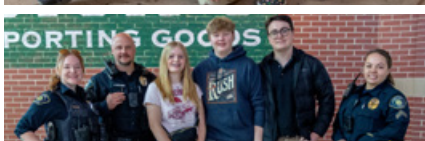
Lone Tree Brewing Company
Scheiner Commercial Group
Ambleside Colorado
American Mechanical Services
Catalyst Contracting
FCI Constructors
Flatiron Development
Alarm Specialists
Park Meadows Business Improvement District



To learn more about the Polar Plunge for Special Olympics, visit specialolympicsco.org/plunge/. Interested in partnering with the Lone Tree Police Department or joining the team for the 2026 Polar Plunge, email Corporal Megan Chapman at megan.chapman@cityoflonetree.com. ♦

MIKEY THE LTPD'S SUPPORT DOG HOSTS FUNDRAISER FOR POLAR PLUNGE!

The Lone Tree Police Department extends his appreciation to all the community members who stopped at Park Meadows Retail Resort on March 24, 2025, to support Lone Tree's favorite support dog, Mikey, in his quest to raise money for the Special Olympics Polar Plunge! Mikey had a wonderful time meeting new friends, passing out swag, and taking photos for an important cause and looks forward to next year's event. In the interim, you can catch Mikey at all the City events throughout the year. ♦



LONE TREE POLICE DEPARTMENT PRESENTS



FIRST ANNUAL YOUNG CITIZEN'S POLICE ACADEMY!

FOR HIGH SCHOOL STUDENTS (9TH-12TH GRADE)



Step into the world of law enforcement and discover all the hard work that goes into keeping our community safe. Learn about the day-to-day operations of the Lone Tree Police Department and see firsthand how officers serve and protect the community they serve.

WHEN

FRIDAY
May 9
6pm — 9pm

SATURDAY
May 10
8am — 4pm
(BBQ LUNCH
PROVIDED)

SUNDAY
May 11
8am — Noon

WHERE

Lone Tree Police Department
9220 Kimmer Drive, Lone Tree

SNACKS AND DRINKS

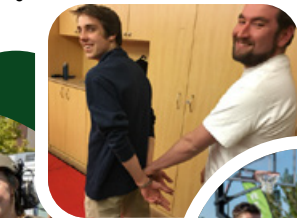
Snacks and drinks will be provided each session.

SCHOOL VOLUNTEER HOURS

Officer Larson will sign off on school volunteer hours at the completion of the academy.

EXPERIENCE

- Be a detective on a mock crime scene and solve the case.
- Participate in a simulated high-risk traffic stop.
- Learn how to clear a building during an emergency event.
- Complete roadside maneuvers while wearing drunk goggles.
- Learn about tasers, body cameras, and police drones.
- Participate in an arrest control class and discuss use of force.
- Cover other prominent law enforcement topics such as driving under the influence, mental health, homeless outreach and more!



All participants must complete an online application, a release of liability waiver, and pass a criminal background check.

Please visit:

go.cityoflonetree.com/YCPA-application
or scan the QR Code to apply.

QUESTIONS OR MORE INFORMATION

Contact School Resource Officer Kris Larson at kris.larson@cityoflonetree.com

LONE TREE POLICE LAUNCH COMMUNITY OUTREACH PROGRAM FOR OLDER ADULTS

The Lone Tree Police Department is launching a new community outreach program aimed at supporting the City's older adults, ensuring they remain connected to essential resources, services, and social opportunities. This initiative is designed to combat isolation among seniors, helping them navigate the challenges and opportunities of living and aging while fostering a sense of belonging within the community. By the Police providing tailored assistance and creating meaningful connections, the program ensures that no older adult is forgotten, offering them the support they need including resources for transportation, help at home, companionship, and education.

For more information, please email communityoutreach@cityoflonetree.com or call the Lone Tree Police Department at 303-799-0533. ♦



Valuable Older Adult Community Resources

Aging Resources of Douglas County

Provides services that promote aging well with independence including transportation, help at home, chore/yard services, companionship, and a loan closet.

agingresourcesdougco.org

Lone Tree Police Department

Resources including fraud and scam trends, tips for protecting yourself, and a Vacation House Watch program to keep your home safe while you are away.

cityoflonetree.com/police

Lone Tree Arts Center

Arts in the Afternoon performances, and SPARK!, a free program offered in conjunction with the Alzheimer's Association.

lonetreeartscenter.org

Living and Aging Well Commission

Monthly luncheons and speakers, periodic potlucks, monthly happy hours and occasional field trips.

cityoflonetree.com/agingwell

Link on Demand

Lone Tree's free shuttle service.

cityoflonetree.com/link-on-demand

Douglas County Libraries

Tech Tutoring, programming for all ages, including informal coffee chats.

dcl.org

South Suburban Parks and Recreation

Providing Silver Sneakers and Renew Active programs, senior focused classes and field trips.

ssprd.org

Nourish Meals on Wheels

Delivers delicious and nutritious meals directly to your door. No income requirements.

NourishMealsonWheels.org

Highlands Ranch Senior Center

Offers a variety of program and activities such as fitness classes, health and community resource programming, and life-long learning and socialization opportunities through enrichment activities. Membership available to Lone Tree residents.

Highlandsranch.org/seniorcenter

LONE TREE POLICE ANNOUNCE PROMOTIONS

The Police Department is pleased to announce the following promotions of our police officers. The department follows the core values of the Teach model – we expect our officers to be truthful, encouraging, accountable, collaborative, and show humility. The promotions of these individuals model these behaviors and demonstrates them consistently through their work in law enforcement and community policing in the Lone Tree community.



Mark Pane, Sergeant

Pane began his career in Lone Tree in 2017 and has served in various roles including Corporal assigned to the Park Meadow Retail Resort mall unit and investigations, and most recently, a school resource officer at Legacy Campus. Pane joined Lone Tree because of its strong focus on community policing, the department's growth as the City develops, and how the community is welcoming and appreciative of the police. As Sergeant, Pane will serve in a supervisory role overseeing the daily operations of his team of officers. When asked why he stays in law enforcement and serves the City of Lone Tree, he said, "I truly love my job and helping people, I like the rush of the unknown, and the comradery and strong friendships I developed over the years with my co-workers. I can't imagine doing anything else."



Meagan Chapman, Corporal

Chapman has been with the Lone Tree Police Department for two years as a patrol officer before being promoted to Corporal on patrol assigned to the Park Meadows Retail Resort mall unit. Prior to Lone Tree, she previously served as a police officer for the Pueblo Police Department for six years. Serving the Lone Tree community, Chapman enjoys the strong sense of community and collaboration between the City, police department, and citizens to make Lone Tree the great community it is today. Chapman says her passion for law enforcement and working for Lone Tree is due to her enjoyment of "creating positive interactions within the community, being the calm during someone's storm, and serving alongside other brave men and women that show up every day to keep our citizens safe."

UPCOMING LTPD EVENTS

Drug Take Back Day

April 26, 10 a.m. to 2 p.m.
Lone Tree Police Lobby,
9220 Kimmer Drive

Have old, expired, or unneeded prescription medications laying around? Drop them off at no cost for safe and secure disposal.



Coffee with a Cop

June 4, 9 a.m. to 11 a.m.
Lone Tree Recreation Center,
10249 Ridgeway Circle

Stop by for delicious coffee and conversation with the Lone Tree Police! Ask questions, learn about what they do, or just grab a hot cup of joe. Coffee served by the Tall Tales Ranch Coffee Cart!



LTPD VISITS AMBLESIDE SCHOOL FOR SAFETY

In March, School Resource Officer (SRO) Kris Larson visited Ambleside School in Lone Tree for a safety demonstration to their first-grade class. During the visit, students learned about the role of a police officer, his equipment, and how they can stay safe.

One of the best parts of the visit was the students got the opportunity to see Officer Larson's patrol car. Taking turns sitting in the back seat, students got to hear the different types of sirens and horns the patrol car makes to alert other drivers to slow down, stop, or move over.

Lone Tree's School Resource Officer Program was created to maintain a safe, secure and orderly learning environment for students, teachers, and staff at various public and private schools in Lone Tree. In addition to these types of presentations at schools, the department's school resource officers have several key responsibilities including responding to incidents and addressing safety concerns; conducting educational programs to promote awareness; mediating and resolving conflicts among students; preparing for and managing emergencies; working closely with school administrators, teachers, and parents to address issues; and serving as positive role models for students.



Is your group interested in learning about the Police Department or to request a speaker from the SRO team, please email the Community Partnership Unit at cpu@cityoflonetree.com.

Ambleside Colorado, located at 9941 Lone Tree Parkway, is Lone Tree's newest educational option, and a Christ-centered K-12 school which prioritizes a rigorous and relational education, meaningful work for students, and partnership with parents who want to see their children grow. To learn more, visit amblesidecolorado.com. ♦

LONE TREE POLICE PARTNER WITH LOCAL BUSINESS FOR RECRUITMENT AND COMMUNITY ENGAGEMENT



In an innovative move to build recruitment efforts and strengthen community ties, the Lone Tree Police Department partnered with the GRPL HAUS Jiu Jitsu in Lone Tree to host its first annual "Work Out with a Cop" event. The event was designed to offer prospective police recruits a chance to engage in fitness activities alongside officers to learn about the mental and physical stamina required for the demands and rewards of a career in law enforcement and community policing in Lone Tree. Sergeant Jeff Roepke and Officer Reid Perry, along with coaches of GRPL HAUS Jiu Jitsu guided participants through a full body workout and some basic jiu jitsu training.

Are you or do you know someone that may be interested in a career in law enforcement with Lone Tree? Please contact Lydia Roux, Talent Acquisition and Development Manager at lydia.roux@cityoflonetree.com. ♦



WALK WITH CARE

PRIORITIZING PEDESTRIAN SAFETY IN LONE TREE

The Lone Tree Police Department would like to provide citizens with these tips for a safe street crossing as safety is a shared responsibility for both drivers and pedestrians:

Pedestrian Tips When Crossing a Street

- Pavement markings are your road map to safely crossing; always use the crosswalk.
- Before crossing, stop at the curb, edge of the road or corner before proceeding
- Look left-right-left and over your shoulder for turning vehicles. If it's clear, begin crossing.
- Continue to check for traffic while crossing
- Walk on sidewalks whenever they are available.
- If there is no sidewalk, walk facing traffic and as far from traffic as possible.
- Always keep alert and keep your head up; don't be distracted by electronic devices that take your eyes (and ears) off the road.
- Look for cars in all directions – including those turning left or right.
- Watch for cars entering or exiting driveways or backing up in parking lots.
- If a crosswalk or intersection is not available, locate a well-lit area where you have the best view of traffic. Wait for a gap in traffic that allows you enough time to cross safely and continue to watch for traffic as you cross.

- Never assume a driver sees you. Make eye contact with drivers as they approach you to make sure you are seen.
- Always be visible. Wear bright clothing during the day and wear reflective materials or use a flashlight at night.
- At intersections with traffic lights and pedestrian signals, it's important to follow the signals carefully. Locate and press the crosswalk button, wait until you see the WALK signal and follow the rules for crossing.
- A flashing DON'T WALK signal indicates you shouldn't start to cross the street. However, if you are in the middle of the street and the DON'T WALK signal starts flashing, continue walking; you have time to complete the crossing.
- If you see a steady DON'T WALK signal, don't begin to cross the street! Wait for the next WALK signal. The WALK signal and the green traffic light indicate that it's your turn to cross the street, but they do not mean it is safe to cross. The WALK signal and the green light mean: Look both ways, and then if it's safe, go. Make eye contact with drivers to ensure they see you as you cross.

Driver Tips When Approaching a Crosswalk or Pedestrian

- Slow down and watch your speeds.
- Look out for pedestrians everywhere, always.
- Be sure to stop before the crosswalk, never in it.
- When the light turns green, go slow, check your surroundings and proceed with caution.
- Try making eye contact with pedestrians to ensure it's safe to continue through the intersection.
- Always use your turn signal to let others know you're turning.
- At night, reduce your speed and make sure your headlights are on.
- Stay off your phone, always yield to pedestrians and slow down when you see the bright, white lines of a crosswalk.
- Follow slower speed limits in school zones and in neighborhoods where there are children and more pedestrians present.



For more information or to request a presentation on this or other safety topics for your group or neighborhood, please email the Lone Tree Police Community Partnership Unit at cpu@cityoflonetree.com. ♦

DRIVING SAFELY IN AND AROUND CONSTRUCTION AND MAINTENANCE WORK ZONES



The start of warmer weather marks the beginning of the majority of work zone projects in around the City. A work zone is an area where roadwork whether its new construction or maintenance takes place and may involve lane closures, detours and moving equipment. Did you know that work zone crashes occur most often in summer and fall? According to the Colorado Department of Transportation (CDOT), in Colorado, eight people were killed following a crash in a work zone. Six were driving through a construction zone and two were part of the work crew. According to the Federal Highway Administration (FHA) in 2018, the last year statistics are available, there were 671 work zone crashes, resulting in 754 fatalities, the majority of which were motorists. Roadway workers accounted for 124 of those fatalities.

For more information on work zone awareness, visit nwzaw.org. For questions about this and other safety issues in the community, please call the Lone Tree Police at 303-799-0533 or email cpu@cityoflonetree.com. ♦

Here are some safety tips for drivers as you approach those work zones in Lone Tree and throughout the Denver region and state:

- Do not speed in work zones. Obey the posted speed limits.
- Stay Alert and Minimize Distractions! Expect the unexpected.
- Watch for workers. Drive with caution.
- Don't change lanes unnecessarily.
- Avoid using mobile devices such as phones while driving in work zones.
- Turn on headlights so that workers and other drivers can see you.
- Be especially alert at night while driving in work zones.
- Expect delays, especially during peak travel times.
- Allow ample space between you and the car in front of you.
- Anticipate lane shifts and merge when directed to do so.
- Be patient!

BEWARE OF SCAMS

The Lone Tree Police Department would like to provide information about a Facebook scam involving the selling of items. The scammers portray themselves as one of your "friends" on Facebook, but the account has been hacked. The post looks like an authentic post from your friend advertising they need to sell a list of household items from their parents' home so they can place their parent in assisted living and pay for their care. They include photos of each item and request a deposit to hold each item; many of the items are being sold at bargain prices. When a potential victim shows interest in purchasing an item and sends a message to the scammer (who is posing as your friend), they are told to make a purchase they must use a cash app and make a deposit to "hold" the item.

Hello guys, we are clearing out items from my uncles house (he got moved to aged care) and he is no longer in need of these items and he is glad to have the extra money for other expenses on coming holidays. We have a truck and can deliver at a small extra fee. Send a Dm if interested in any item.
FIRST COME FIRST SERVE BASIS!
Sorry, I'm not home till tomorrow But I'm not promising to hold on till then Well, if you pay a deposit now, I won't open talk with anyone else about it and mark it sold on your name. So when I'm home, you can come and check it. If you like it, you will pay the balance and take it, if you don't, I will refund the deposit you paid
Tractor \$2300
Enclosed Trailer \$1000
Polaris rsr xp 4 1000 - \$3500
Generator 7000EU - \$700
4 wheeler - \$2400
2013 Ford F-150 FX4
Driven 141,000 miles Automatic transmission Exterior: White • Interior: Black-\$4000
Refrigerator - \$400
Ps5 console - \$650
Campers - \$1800
Hot tub - \$700
Microwave - \$100

transmission Exterior: White • Interior: Black-\$4000
Refrigerator - \$400
Ps5 console - \$650
Campers - \$1800
Hot tub - \$700
Microwave - \$100
Golf cart - \$1000
Kitchen aid - \$150
Tv smart '55' - \$250
washer and dryer - \$500
Zero turn Mower - \$900
Sectional couch - \$400
Grey dresser - \$150
Freezer - \$150
Bri Mar Dump Trailer - \$1500
Gaming system \$200
Yard gazebo - \$700
Outside kennel 10x10- \$150
Water slide- \$500
Treadmill - \$300
2017 Honda Accord 138k miles V6- \$2000
Bunk bed - \$300
Prices slightly Negotiable.
@highlight



Don't fall
for this
Facebook
Scam!



This is a scam! Once money is sent through the cash app, the scam is complete.

Here are few suggestions on how to spot a scammer:

- Purchasing online? Make every effort to examine the item in person before purchasing.
- Never give out any personal information such as social security number, email address, bank account, or credit card number.
- Check with the person posting the information if they are selling items and have not had their account hacked.
- A possible online scam seller only accepts wire transfers or other non-reversible payments.
- Possible scam sellers don't or won't meet in person.
- Scammers usually ask for a deposit or pre-payment.

If you think you have been a victim of a scam, please call the Police Department at 303-799-0533 or stop by the Police Department to report the crime. ♦

SCAM ALERT

Think you got a text from ExpressToll?
THINK AGAIN!

ExpressToll NEVER sends payment requests via text.

If you receive a suspicious text:

- ❌ Do NOT click any links
- ❌ Do NOT reply
- ✅ Just delete it!

The only secure way to check your account is at www.expresstoll.com

E470 **ExpressToll**

BADGER GULCH PARK COMING IN 2026 TO LONE TREE



A new park is set to transform the heart of Lone Tree's RidgeGate Central Village Couplet District, bringing a unique blend of serenity and vibrancy to the community. Designed to offer a peaceful escape or a lively gathering place, the park will offer an array of amenities for everyone.

Adjacent to the RidgeGate Senior Housing development, the 3.36-acre park is intended to serve residents of the senior attainable housing development, as well as the broader Lone Tree community. Developed by Coventry Development and the Rampart Range Metropolitan District, the park will feature a pavilion, picnic tables, a restroom, demonstration garden, fitness equipment, children's play areas, and an inspiring public art installation.

The park's focal point will be an iconic pedestrian bridge that will provide access to the Badger Gulch Regional Trail and connect the Couplet District to the Lyric at RidgeGate neighborhood. The design of the park and the pedestrian bridge is intended to preserve the native riparian habitat along the creek.

Construction will commence in 2025, with an anticipated opening in 2026-2027.

For more information, contact Bobby Weidmann, Lone Tree Associate Planner, at 720-509-1180, email bobby.weidmann@cityoflonetree.com or learn more about the project and follow its progress at ridgeline.com/directory/badger-gulch-park/ ♦



SPRING HOME PROJECTS

WHEN DO YOU NEED A BUILDING PERMIT

The City of Lone Tree is dedicated to fostering a safe and secure environment by ensuring that all construction projects are completed in adherence to local building codes and safety standards. Whether it's the installation of a new water heater, basement finish, or a new roof, the City's Building Department ensures that each project is completed with the utmost regard for safety and compliance to protect your family, property and neighborhood.



As part of this process, obtaining a building permit may be required for your home improvement project. A building permit will ensure your project is safe, up to code, compliant with local regulations, and inspected by the City accordingly. If your project does not comply with building codes, the value of your investment could be reduced. One example, if you decide to sell your home that has modifications without a permit, the buyer may require you to remove the work or conduct costly repairs to bring them back into compliance.

When Do You Need a Building Permit?

A building permit is required whenever you plan to construct, enlarge, alter, repair, move, demolish, or change any building or structure. Additionally, permits are necessary for any work related to electrical, gas, mechanical, or plumbing systems, such as erecting, installing, enlarging, altering, repairing, removing, converting, or replacing these systems.

Some common projects that require a building permit include:

- Additions
- Air Conditioners
- Basement finish
- New furnaces and water heaters
- Roof replacements
- Sewer line repairs within your home
- Decks and Patio Covers

When You Don't Need a Permit

While many projects require a building permit, there are certain exceptions. However, it's important to always check with your local Homeowner's Association (HOA) and zoning regulations to confirm compliance. Always consult local building codes and regulations before starting any project, even if a permit is not required.

Some projects that typically don't require a permit include:

Building

- Fences under seven feet tall
- Retaining walls under four feet
- Concrete walks, patios, and driveways
- Painting
- Swings and other playground equipment
- Window replacements of the same size

Electrical

- Temporary plug-in lighting, devices, and equipment
- Replacement of receptacles, switches, and lights

Plumbing

- Clearing stoppages or repairing leaks in drains and supply lines
- Replacing fixtures, sinks, toilets, and shutoff valves

Emergency Repairs

In the case of emergency repairs, such as those made after hours, on holidays, or weekends, you typically have a 24-hour grace period to apply for the proper permits.

How to Apply for a Building Permit

Visit cityoflonetree.com/apply-for-a-permit/ to inquire or apply for a permit. Permit applications are only accepted electronically through our portal. Please note that plan review fees are due at time of application submittal.

Building Division

For general questions, call the Building Line at 720-390-5211 or email the building division at building@cityoflonetree.com ♦

MEET THE LONE TREE BUILDING DIVISION



The team from left to right:

Linda Glover, Building Permit Coordinator; Brian Herren, Electrical Inspector; Shawn Hert, Building Inspector; Matt Archer, Chief Building Official; Jim Beaver, Chief Inspector; Audra Gerber, Plans Examiner.

The Building Division of the City of Lone Tree plays a crucial role in overseeing the built environment in the City. By administering building codes and safety regulations, the division ensures that all structures and spaces within the City meet the minimum standards necessary for safety, health, and the general welfare of the community.

The building team's responsibilities cover a wide array of tasks aimed at maintaining and improving the built environment. Our team conducts plan reviews, issues permits, and performs inspections to verify that structures comply with essential standards in areas such as:

- Structural strength and stability
- Accessibility and means of egress (ensuring all can get in and out when needed)
- Sanitation, light and ventilation
- Energy conservation
- Fire safety and protection

In 2024, the Building Division issued over 1,200 permits and conducted more than 10,000 inspections in the pursuit of providing a safe environment for those living, working, and thriving in Lone Tree.

The Lone Tree Building Division's work goes beyond the basic requirements of building safety. The team helps elevate the safety standards for all who live and work in Lone Tree, ensuring the City remains a vibrant, secure, and thriving place for generations to come.

Some of their work to remain at the forefront of building safety codes and regulations includes:

- **Leadership in Code Development:** Our staff chairs the Colorado Code Change Committee, contributes to national committees for accessibility and egress, and is a leader in the Colorado Building Education Program.
- **Industry Engagement:** The team is involved with industry boards and have helped establish the Colorado Building Future's Committee, which provides mentorship and guidance to students interested in the construction industry.
- **Advocacy and Legislation:** The division actively lobbies for legislation that could impact the safety and integrity of buildings in Lone Tree and across the state, ensuring that local voices are heard in state legislative matters.

To learn more about the Lone Tree Building Division, visit cityoflonetree.com/departments/community-development/building/ ♦

LONE TREE TEEN COURT

An Innovative Diversion Justice Program for Teen Offenders Run by Peers



In 2024, 109 juvenile cases were screened for eligibility, with 72 qualifying for participation. Out of those, 58 cases chose to engage with the Lone Tree Teen Court process.

What are the Ages of Offenders and Types of Offenses Heard in Teen Court?

Teen Court focuses on misdemeanor offenses and youth-related infractions with most cases being shoplifting and theft. Generally, the teen court handles offenses that are non-violent and first-time offenses involving teens between the ages of 12 and 17.

Since 2017, the Lone Tree Teen Court has been an innovative educational diversion program designed to address youth-related misdemeanors and offenses within the Lone Tree community. Offering an alternative to traditional juvenile court proceedings, teen court provides teen offenders with an opportunity to take responsibility for their actions in a supportive, peer-driven environment. By involving teen volunteers in the decision-making process, the program promotes skills related to leadership, empathy and compassion, critical thinking, communication and conflict resolution. For the teen offenders, teen court is a voluntary alternative to the traditional municipal court process that uses three restorative justice principles that promote accountability, competency development, community engagement and safety.

How Do Teen Offenders Get Chosen for Teen Court?

The teen defendant must first comply with their first court appearance at Lone Tree Municipal Court where they are advised of their rights, the nature of the charge(s), and if they are eligible for teen court. If the defendant chooses teen court, they will schedule an intake interview with the teen court coordinator where they will be interviewed about the offense, learn about the teen court program, and be advised if they are eligible and willing to participate. Then a peer panel hearing will be scheduled if they are eligible. If they are not eligible, their case is forwarded to the municipal court.

How Does the Peer Panel Work?

Teen Court peer panels in Lone Tree are comprised of youth volunteers. Panelists interview respondents and their families regarding the offense, the impacts of the crime, and how the respondent can remediate their actions. The panelists use what is shared in the interview process to recommend an appropriate and meaningful set of sentencing that paves the way for respondents to repair the harm they have caused by their actions. Sentencing options may include community service, apology letters, empowerment workshops and other educational classes, shoplifting interview essays, and special projects. Respondents are required to complete their sentencing requirements within three months after their participation in the peer panel.

Who Can Volunteer for Teen Court?

Lone Tree Teen Court accepts youth volunteer applications on an on-going basis. Youth applicants must be age 12 through 18 years old. Interested in learning more about becoming a teen volunteer for teen court, visit cityoflonetree.com and complete your volunteer application.

For more information about the Lone Tree Teen Court, email the teen court coordinator at teencourt@cityoflonetree.com or call 720-509-1265. ♦

CITY ADOPTS MANAGEMENT PLAN TO ADDRESS INVASIVE WEEDS

PLAN WILL SERVE AS A RESOURCE FOR PROPERTY OWNERS

Noxious weeds are invasive plants that are not native to the local area. According to the Department of Agriculture, noxious weeds are any plant material that is a non-native aggressive invader that replaces native vegetation, reduces agricultural productivity, increases wind erosion, taxes water resources and poses an increased threat to communities from wildfire. These weeds have an advantage because insects, diseases, and animals that normally control them are not found for noxious weeds. In turn, noxious weeds replace native flora, establish quickly, are difficult to eradicate, degrade healthy soils, tax recreational access, increase loss of biodiversity and cause economic loss.

To address the threat of noxious weeds on private and public property in the City, the City Council adopted a Noxious Weed Management Plan, as mandated by the State of Colorado. This plan, established by Municipal Code, Chapter 7, outlines property owners' responsibilities for the mitigation of noxious weeds, as well as names the Lone Tree Recreation Advisory Board as the City's Noxious Weed Advisory Board.

The City's Noxious Weed Management Plan serves as a resource for residents, homeowner's associations, metro districts, and all property owners. It aims to educate property owners about potential infestations on their property and provide resources and best management practices for addressing noxious weeds. The plan also focuses on protecting the community's ecosystem by teaching property owners how to identify, manage, eradicate and evaluate the success of their efforts to eliminate these invasive plant species.

Each property is different in how noxious weeds should be managed. Once you have correctly identified the weed(s) on your property, the City's Noxious Weed Management Plan can provide strategies on prevention, eradication, control, suppression, and temporary erosion and sediment control.

There are numerous resources available on the mitigation of noxious weeds including:

Colorado Department of Agriculture
ag.colorado.gov/conservation/noxious-weeds/species-id

Douglas County Colorado State University Extension
douglas.extension.colostate.edu/horticulture/master-gardener/

Colorado Weed Management Association
cwma.org



Noxious weed - Common Teasel



Noxious weed - Hairy Willowherb



Noxious weed - Yellow Flag Iris

The City requests all property owners to voluntarily comply with these noxious weed regulations. Citizens are also encouraged to contact the City if you observe infestations of noxious weeds on any property.

For more information on the Noxious Weed Management Plan or a list of weed species required to be eradicated, visit cityoflonetree.com. Questions, please reach out to your friendly City Code Compliance Supervisor and Forester, Sam Waggener, at go.cityoflonetree.com/ContactUs email samwaggener@cityoflonetree.com or call 303-708-1818. ♦



UNDERSTANDING FLOOD RISK

Flooding is one of the most common and devastating natural disasters, often striking with little warning. Anywhere it rains, it can flood. Regardless of size, all rivers, streams, tributaries and canals have the potential to flood. It's important to know if your property is in a flood zone or at risk of flooding. Being aware of these risks can help you verify if there is potential for your property to be affected by a flood, and what to do to protect your family.

To understand your flood risk, follow these steps:

1. Confirm if your property is in a flood zone.

Flood maps show different flood zones that indicate the level of flood risk and flood plain boundaries.

- FEMA Flood Map Center [Msc.fema.gov](https://www.fema.gov)
- Mile High Flood District Floodplain Viewer mhfd.maps.arcgis.com
- Douglas County douglas.co.us/public-works/stormwater/flood-plain-information/

2. Protect Your Property from Flood Hazards

- Flood insurance is recommended for everyone, but especially if you are in or near a mapped floodplain area. Standard homeowner's insurance policies do not cover flood losses.
- Ensure that water flows away from your house.
- Report potential problems like blocked culverts, or people dumping debris in water ways to the City's Public Works Department at [cityoflonetree.com/contact us](https://cityoflonetree.com/contact-us).

3. Make Plans to Stay Safe

Flash floods are sudden and give little to no warning.

- Designate a place on higher ground that you can get to quickly. Plan to move to higher ground before flooding begins.
- Have photocopies of important documents and valuable papers away from your house (safe deposit box).

4. What To Do During a Flood

- During heavy rainfall, stay alert for sirens and possible flood warnings (TV, radio, website, social media, and the City/County emergency alert system).
- If you are caught in the house by floodwater, move to a higher floor or the roof.
- Turn Around! Don't Drown! Never walk, swim, or drive through floodwater. Just six inches of fast-moving floodwater can knock you over and 12 inches can carry your vehicle away.

For more information on flood safety, visit Floodsmart.gov. You can also contact the City of Lone Tree Public Works Department at (303) 662-8112. ♦

MORE SMALL CELL WIRELESS FACILITIES GOING UP

You may start seeing more small cell wireless facilities being installed, by a small cell provider (AT&T), this spring in the City. A small cell wireless facility is part of a larger network that provides cellular service to smartphones, tablets, and other cellular devices. Small cell facilities are critical to faster and more consistent connectivity as people become more dependent upon high-quality cellular service for personal, business and public safety communications, as well as for entertainment. These installations are for standard or LTE service but have the capability to provide 5G technology in the future.

Due to current federal and state regulations, the City has limited regulation and must allow construction of these small cell facilities within the City's right of way (ROW) which includes medians, streets, and sidewalks. However, all providers are required to install free-standing poles with a limited profile or poles designed to be integrated with the adjacent street lights. To date, all small cell wireless facilities have been for 30-foot free-standing poles. The poles are either black or green, depending on the colors of the street lights or traffic signal poles in the immediate neighborhood.

Provided is a list of the new small cell facility locations that are being installed by the provider:

9873 Ridgeway Parkway
9929 Park Meadows Boulevard
9555 Halstead Lane
9261 Ridgeway Parkway
9704 Sky Ridge Avenue
9203 Sky Ridge Avenue
9934 Trainstation Circle
10368 Hillston Street
10446 Montecito Drive
10675 Alicante Road
10320 Ridgeway Parkway
10200 Bluffmont Drive



For more information, visit cityoflonetree.com or call Public Works at 303-662-8112. ♦

ACRES GREEN STORM LINING PROJECT TO BEGIN IN MAY

A new drainage improvement project to line an existing corrugated metal pipe (CMP) will begin in May along Acres Green Drive immediately south of C-470 and north of the Park Meadows Drive intersection. This project consists of approximately 142 linear feet of existing 60" CMP that stretches across the Acres Green Drive roadway.

As part of the City's on-going efforts to improve the storm sewer infrastructure around the City, this pipe was identified as being high priority due to its location underneath a major roadway and receiving flows from a regional detention facility. The expected outcome for this project is that this pipe will be rehabilitated in a manner which extends the infrastructure's lifespan, improves conveyance capabilities, and reduces future maintenance operations outside of routine cleanings.

The project will begin with lining work lasting approximately one week, and restoration of the site at the surface lasting an additional week or two depending on weather. Residents can expect vehicular and pedestrian traffic impacts including closed traffic lanes and detoured sidewalk paths to avoid conflicts between the public and heavy equipment that will be used for the project.



For more information on the project, please email Duncan Rady, Stormwater Engineer, at duncan.rady@cityoflonetree.com or call 720-509-1250. ♦

Celebrating Community Spirit - Living and Aging Well Commission





BACKYARD BEATS

CELEBRATES LOCAL LONE TREE FLAVOR

Summer in Lone Tree starts with a beat! Join us for **Backyard Beats: Love Local**, a vibrant community concert that brings music, food, and fun together under the open sky at Sweetwater Park.

Taking place on **Saturday, May 24**, this annual event sets the perfect tone for the season with live performances from talented musicians, creating an unforgettable evening of rhythm and melody. Whether you're dancing with friends or lounging on a picnic blanket, the atmosphere is electric with the joy of neighbors coming together to celebrate.

But the music is just the beginning! A variety of **local food trucks** will be on-site, serving up delicious eats from some of the area's favorite vendors. From savory bites to sweet treats, there's something for everyone to enjoy while soaking in the sounds of summer.

Backyard Beats: Love Local is more than just a concert—it's a chance to support local artists, businesses, and the community we love. Mark your calendar and get ready to kick off summer in style!



TUNES ON THE TERRACE RETURNS FOR A SPECTACULAR SUMMER OF LIVE MUSIC!

Get ready for warm summer nights filled with electrifying performances as *Tunes on the Terrace* returns to Lone Tree Arts Center! This beloved concert series invites you to experience three world-class artists under the stars on our beautiful terrace theater with one special indoor performance as well. With an exciting lineup of artists bringing a mix of blues, bluegrass, rock, and retro vibes, there's something for every music lover.

Mark your calendars and grab your tickets—this summer's lineup is nothing short of spectacular.

Sierra Green and the Giants



June 27, 2025

Kicking off the series is powerhouse vocalist Sierra Green and the Giants. Straight from the heart of New Orleans, Sierra Green delivers a dynamic blend of soul, funk, and blues with a voice that commands attention. Backed by The Giants, her performances are packed with energy, grit, and the spirit of the Crescent City. If you love artists like Aretha Franklin and Sharon Jones, this is a show you won't want to miss!

Dan Tyminski Band



July 11, 2025

Bluegrass and country fans, get ready for a night of masterful musicianship with the Dan Tyminski Band. A 14-time Grammy Award winner, Dan Tyminski is best known for his iconic vocals on *Man of Constant Sorrow* from *O Brother, Where Art Thou?* and his collaborations with Alison Krauss & Union Station. Whether he's delivering traditional bluegrass or contemporary country, Tyminski's rich voice and incredible picking will have you tapping your toes all night long.

John Oates



July 19, 2025

Yes, *that* John Oates! As one half of the legendary duo Hall & Oates, John Oates has helped shape the sound of pop and rock for decades. With unforgettable hits like *Rich Girl*, *Maneater*, and *You Make My Dreams*, his music has become a timeless soundtrack for generations. Oates' solo performances blend classic favorites with blues, folk, and Americana influences, making this an intimate and unforgettable night of music.

The Dreamboats



July 25, 2025

Closing out the series with a high-energy, feel-good finale, The Dreamboats bring vintage rock 'n' roll to life with a modern edge. Channeling the spirit of The Beatles, Buddy Holly, and The Beach Boys, this Canadian band delivers infectious rhythms, harmonies, and retro charm. Get ready to dance and sing along to an electrifying mix of original tunes and nostalgic hits!

Experience the Magic of Live Music Under the Stars

There's nothing quite like a summer evening filled with incredible live music, fresh air, and a vibrant community of music lovers. Whether you're a longtime fan or discovering these artists for the first time, *Tunes on the Terrace* is the perfect way to celebrate the season.

Secure your seats now and don't miss out on this unforgettable lineup!

Tickets are available at
[lonetreeartscenter.org/
series/tunes-on-the-terrace](https://lonetreeartscenter.org/series/tunes-on-the-terrace)

EXPERIENCE THE MAGIC OF BINDLESTIFF FAMILY CIRKUS AT LONE TREE ARTS CENTER

This spring, the Lone Tree Arts Center is pleased to welcome the renowned Bindlestiff Family Cirkus to our community! This renowned group brings a mesmerizing blend of circus, sideshow, and vaudeville on **Sunday, May 4, 2025, at 1:30 PM**. This special performance is part of the Passport to Culture series, designed to ignite a lifelong passion for the performing arts among children and families.

Founded in 1995 by Keith Nelson and Stephanie Monseu, the Bindlestiff Family Cirkus has been a beacon of American entertainment traditions for over two decades. Their shows feature authentic sideshow feats such as blade juggling, feats of balance, and sword swallowing, offering audiences a glimpse into the fairground amusements cherished by previous generations.

In addition to the Passport to Culture performance, the Lone Tree Arts Center is committed to inclusivity by offering a specially adapted performance for individuals with autism and other sensory needs. This initiative ensures that everyone in our community can partake in the wonder and excitement of live performance in a comfortable and accommodating environment.

Children will also have the opportunity to participate in the LTAC Passport to Culture program when they attend this show. Each child receives a special "Passport" to collect stickers from each performance they attend. After collecting eight stickers, the booklet can be redeemed for a free ticket to a future Passport to Culture performance, allowing kids to further explore the world through the dynamic world of the arts.

Tickets for this family-friendly event start at \$15 and can be purchased through the Lone Tree Arts Center's official website. Don't miss this chance to experience the enchanting world of Bindlestiff Family Cirkus—a show that promises to delight audiences of all ages with a unique blend of artistry and thrilling performances. ♦



IF YOU GO:

Passport to Culture:
Bindlestiff Family Cirkus
Sunday, May 4 at 1:30pm

Sensory Inclusive Performance:
Bindlestiff Family Cirkus
Sunday, May 4 at 4pm

Lone Tree Arts Center
10075 Commons Street

TICKETS

lonetreeartscenter.org

NEXT STEPS TO INDEPENDENCE EVENT PROVIDES VITAL RESOURCES

The **Next Steps to Independence** event at Lone Tree Arts Center, in partnership with **Developmental Pathways** and **Easterseals Colorado**, continues to serve as a vital resource for young adults with intellectual and cognitive disabilities as they navigate the transition to adulthood. Over the past three years, this event has brought together more than **30 local vendors**, including service providers, recreation agencies, and other organizations dedicated to supporting independence and community engagement. Attendees and their families have had the opportunity to explore a wide range of services designed to assist with education, employment, housing, and social enrichment. **This year's event is Monday, May 5.**

This year, we expanded the event to include a **series of expert-led discussions on supported decision-making**, empowering individuals and their families to make informed choices about their futures. These sessions provided valuable insights into alternatives to guardianship, legal rights, and strategies for fostering independence while maintaining necessary support systems. By offering these focused conversations alongside our traditional resource fair, we aimed to provide a more comprehensive and impactful experience for attendees.

Through this ongoing initiative, Lone Tree Arts Center remains committed to fostering inclusion, empowerment, and access to essential resources. **Next Steps to Independence** continues to grow as a space where young adults, caregivers, and service providers can connect, share knowledge, and build a stronger foundation for the future. We are grateful to our partners and participating organizations for making this event possible and look forward to continuing to support individuals on their path to independence.

For more information, visit:
<https://www.lonetreeartscenter.org/whats-on/next-steps-to-independence-2> ♦



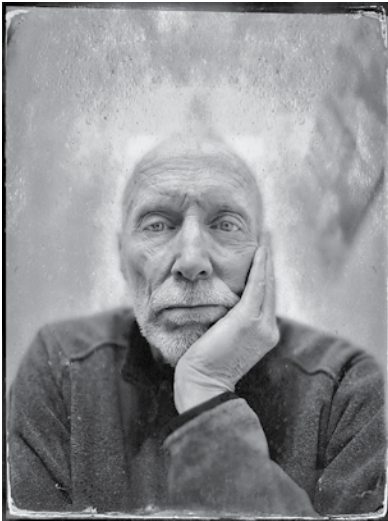
A VISUAL JOURNEY

EXPLORING THE LIGHT PHOTO SHOW

RETURNS TO LONE TREE ARTS CENTER

The Lone Tree Arts Center proudly presents the **23rd Annual Exploring the Light Photo Show**, running from **March 27 to June 22, 2025**. This esteemed exhibition, organized by the Lone Tree Arts Commission and the Lone Tree Photo Club with support from the Scientific and Cultural Facilities District (SCFD), showcases the diverse talents of local photographers, offering visitors a visual journey through various styles and subjects.

The exhibition is open for viewing Monday through Friday, 10:00 am to 4:00 pm, and two hours prior to any performance at the Lone Tree Arts Center. ♦



ART MEETS INFRASTRUCTURE

IN LONE TREE'S UTILITY WRAP PROGRAM

Lone Tree's streets shine with vibrant splashes of color thanks to the City's Utility Wrap Program. Spearheaded by the Lone Tree Arts Commission, the initiative transforms ordinary traffic signal and utility boxes into captivating canvases. Each year, original works from Colorado-based artists are selected to be printed on vinyl and installed on these everyday fixtures throughout the City. The result? A celebration of local creativity that both beautifies public spaces and reinforces Lone Tree's commitment to supporting the arts.

Among the standout designs this year is *Mountain Glory* by artist Stacey Reynolds, a stylized vector art piece that captures the majesty of Colorado's landscape. With bright layers of mountain peaks, alpine trees, and tranquil lake reflections, Reynolds' work is a love letter to the Front Range. "*Mountain Glory* celebrates the incredible landscape of Colorado," Reynolds shared. "The overlay of sun and wind speaks to the beautiful weather we enjoy in the summer." This piece doesn't just depict nature—it reflects the essence of living in Lone Tree.

Another striking wrap, *For Obvious Reasons* by Holly Wasinger, offers a more emotive experience. Using a dynamic mix of techniques, from chaotic drips to detailed renderings, Wasinger's work explores the emotional depth behind visual art. "It is my ultimate goal to convey a strong emotional experience that makes the viewer feel understood and connected," she explained. Together, these diverse pieces exemplify how Lone Tree's Utility Wrap Program brings art into the everyday—turning street corners into moments of reflection, joy, and connection. ♦



Mountain Glory



For Obvious Reasons



EVENT CALENDAR



Passport to Culture:
Bindlestiff
Family Circus

May 4



Gerald Albright's
Lone Tree Sessions:
Chante Moore

May 10



Arts in the Afternoon:
Just a Few Friends:
Mozart and Brahms

May 14



Passport to Culture:
YOKOSO! A Japanese
Culture Mix-Tape

June 8



Arts in the Afternoon:
Mont Alto Motion
Picture Orchestra

June 18



Tunes on the Terrace:
Sierra Green
and the Giants

June 27

SKY RIDGE AT LONE TREE STATION MOBILITY HUB POISED FOR CONNECTIVITY



Construction will start this year on the new Sky Ridge at Lone Tree Station Mobility Hub poised to transform how people commute and connect across Lone Tree and the region to reach their destinations. To be constructed by the Colorado Department of Transportation (CDOT), the mobility hub redefines the traditional park-and-ride transit, serving as a transportation center that emphasizes multimodal options, seamless mode-to-mode transitions, real-time passenger information, passenger convenience, and opportunities to create transit-friendly development in surrounding areas.

The Sky Ridge at Lone Tree Station Mobility Hub will be slightly located south of the I-25 and Lincoln Avenue interchange. The transit improvement project includes the construction of slip ramps along the I-25 northbound off-ramp and southbound on-ramp for use by Bustang transit services and a pedestrian bridge over I-25 providing pedestrian and bicycle access over I-25 between the mobility hub station platforms. Pedestrian ramps and stairs will be provided to the bridge, and a plaza space will be provided on the west side of the mobility hub between I-25 and Trainstation Circle. The project includes installation of bus shelters and sidewalks. In addition, the mobility hub will not have any long-term parking, however, the facility will offer a kiss and ride area where cars can briefly stop to drop off or pick up passengers without parking.

The proposed mobility hub in Lone Tree aligns with the City's vision to have a multimodal transportation network that is safe, reliable, accessible and mobile for



people of all ages and abilities who live, work and visit the City. The mobility hub will also provide Bustang users access to light rail, Lone Tree's Link on Demand transit service, and connect to the future Lone Tree City Center, planned for the area east of I-25 between Lincoln Avenue and RidgeGate Parkway.

The estimated cost of the project for design and construction is \$22 million, with funding being provided by CDOT, the Denver Regional Council of Governments (DRCOG), Douglas County, Lone Tree, and the Southeast Public Improvement Metropolitan District. Construction is expected to begin in the spring 2025 with a targeted opening date in 2026.

For more information on the project, visit codot.gov/projects/studies/i25-lone-tree-mobility-hub-design or email CDOT's Project Manager Giovanna Toppi at giovanna.toppi@state.co.us
To learn about Bustang, visit ridebustang.com ♦

COUNTY LINE ROAD AND PARKWAY DRIVE SIGNAL REPLACEMENT BEGINS

Construction will begin this spring on the City's upcoming traffic signal replacement project at the intersection of County Line Road and Parkway Drive. This vital infrastructure upgrade will bring safer and more modern traffic operations to Lone Tree with the replacement of the existing span wire traffic signal with a more modern, mast arm system, enhancing safety and visibility for both drivers and pedestrians.

This intersection improvements build upon last year's successful replacement of the span wire signal at County Line Road and Acres Green Drive. Once this year's project is complete, only one span wire signal will remain in Lone Tree—currently scheduled for replacement in 2026.

In addition to the new mast arms and traffic signal components, the project includes updates to pedestrian ramps, new crosswalk striping, improved pedestrian signals, and other accessibility enhancements.

Although initial activities such as caisson layout and utility coordination will begin in the spring, residents may not notice significant construction impacts until the summer and fall. The project includes a planned pause after the initial work to allow time for critical materials to be manufactured and delivered. The project is anticipated to be completed by November 2025.

The County Line and Parkway Drive intersection project is just one of several improvements taking place along County Line Road this year. In partnership with the City of Centennial, the corridor will also undergo concrete curb, gutter, and sidewalk repairs, followed by a full repaving using Stone Mastic Asphalt (SMA) for a smoother, more durable roadway surface.

For more information, email Angela Hager, Senior Project Engineer at angela.hager@cityoflonetree.com or call 720-509-1251. ♦

2025 CONCRETE REPLACEMENT AND ASPHALT OVERLAY PROGRAM SCHEDULE

The City's roads are well maintained, attractive, safe, and easily traveled due to the City's work toward effective road maintenance. Thousands of vehicles use the roads in Lone Tree every day, and exposure to water, air, and sunlight can cause deterioration. This can lead to potholes, cracks, and decline in road quality.

Each year, Public Works consults its Roadway Condition Analysis process to identify roads in Lone Tree in need of repair and/or maintenance to restore them to acceptable service-level pavement conditions to sustain a high-quality roadway network. The appropriate strategy selected for each street is determined based on several factors including traffic volumes, the remaining structural life of the pavement and types and severity of the distresses present.

Lone Tree is also partnering with the City of Centennial to repave County Line Road from Quebec Street to Yosemite Street. Replacement of damaged curb, gutter, and sidewalk along these streets is anticipated to begin in early May. During this phase of construction, crews are planning to replace concrete sidewalk and curb & gutter. This work is anticipated to take approximately four weeks.

The asphalt resurfacing is anticipated to begin shortly after the conclusion of the concrete phase. Crews will replace asphalt placing a new mix of asphalt.

The City's annual budget for the asphalt overlay program is \$2,448,000 and the concrete replacement program is \$950,710.00.

The following roadways are scheduled this spring and summer:

- RidgeView neighborhood (Kemper Drive, La Costa Lane, and Crosby Drive)
- TerraRidge HOA street (Las Colinas Drive)
- Acres Green Drive (County Line Road to Park Meadows Drive)
- Troon Village Dr (Fairview Drive to Yosemite Street)
- Park Meadows Center Drive (County Line Road to Yosemite Street)

For more information, please email Eric Barnes, Field Inspector, at eric.barnes@cityoflonetree.com. ♦

RIBBON CUTTINGS AND GRAND OPENINGS



Miya Moon

9400 Heritage Hills Circle, #400
miyamoonco.com

Miya Moon is a place where the timeless elegance of traditional Chinese cuisine meets the sophistication of modern luxury. At Miya Moon, they are dedicated to redefining the dining experience by elevating classic Chinese dishes to new heights of refinement. Their meticulously curated menu blends authentic flavors with contemporary artistry, creating a culinary journey that is both familiar and extraordinary. Patrons can step into their sleek, modern ambiance, where every detail has been thoughtfully designed to enhance your



dining pleasure. From the sumptuous textures and rich colors of their interior to the impeccable service that accompanies every meal, Miya Moon is a celebration of both tradition and innovation. Whether you're here for an intimate dinner or a grand celebration, our exquisite offerings promise to delight your senses and create unforgettable memories.



The 303 Sports Grill – Lone Tree

9228 Park Meadows Drive
303sportsgrill.com

There isn't a bad seat in the house at 303 Sports Grill Lone Tree with its six TVs in a private room that can hold up to 25 people, four TVs on the covered patio that seats 50, & another 35 TVs that circle the bar & dining room, you're bound to find your favorite sporting event or race. At 303, they proudly pour 20 beers on tap and more in cans and bottles, and have a selection of Tequilas, Whiskeys, Bourbons & Scotches that you won't find in a lot of sports bars. Food at 303 is not your traditional bar food either with 14 wing sauces and three rubs, green



chili, fried pickles, cheese curds, 10 salad choices, 15 BURGERS, seven all-beef hot dogs, 18 sandwiches, 16 signature pizzas and a kid's menu. Whether it's their weekday Happy Hour from 3-6 p.m., lunch with the co-workers, dinner with friends & family or just anytime to watch your favorite sporting event & enjoy some great food & drinks, they want you to feel like family at the 303 Sports Grill in Lone Tree.



Yu's Noodle Shop
9996 Commons Street, #310

Yu's Noodle shop aims to both honor and elevate the Chinese culinary tradition of handmade noodles. With an emphasis on high quality ingredients, classic techniques, and thoughtful presentations, they want to delight guests with an affordable meal that satisfies all their senses. Their goal is to provide a product that is handcrafted, fresh and healthy without sacrificing flavor.



INSIDE PARK MEADOWS RETAIL RESORT

Rowan
heyrowan.com



COMING IN 2026!



The Capital Grille
9067 E. Westview Road (former site of Red Lobster)
thecapitalgrille.com

The City Council approved the Site Improvement Plan (SIP) for the Capital Grille. The project includes the redevelopment of a vacant restaurant (former site of Red Lobster), in which the existing building will be demolished, and a new 8,897 square foot, one-story restaurant building will be constructed. The proposal includes the development of other site amenities including a sidewalk connection to Westview Road, landscaping and exterior lighting. Construction is anticipated to begin later this spring, with a grand opening celebration in the spring 2026.

LONE TREE BUSINESS FEATURE

Colorado Motorcycle Adventures & Adventure Motorcycle Works

8218 Park Meadows Drive, Units A & B, Lone Tree
www.coloradomotorcycleadventures.com
www.advmotoworks.com

Serving the adventure motorcycle community for over a decade, Colorado Motorcycle Adventures (CMA) has become the premier ADV and dual-sport motorcycle rental and tour provider in the region. After relocating from Denver to Lone Tree, the company continues to cater to outdoor enthusiasts of a different breed—those who crave the freedom of two wheels and the thrill of off-road exploration.

As a top adventure destination, Colorado is world-famous for skiing and hiking, but it's also a bucket-list location for motorcyclists. Riders travel from across the country—and even internationally—to experience the majestic scenery, high mountain passes, and rugged backcountry trails that locals sometimes take for granted. Whether it's tackling the Colorado Backcountry Discovery Route (COBDR) or winding through the stunning Million Dollar Highway, Colorado's diverse terrain offers an unmatched adventure motorcycling experience.

Adventure motorcycling, or ADV riding, is all about versatility, self-reliance, and exploration. Unlike traditional street motorcycles, adventure and dual-sport bikes are designed to handle both pavement and off-road terrain, allowing riders to venture deep into remote landscapes that are otherwise inaccessible.



Colorado Motorcycle Adventures makes these thrilling experiences possible with a fleet of over 40 premium, late-model adventure motorcycles, perfectly equipped for navigating Colorado's winding highways and rugged dirt trails.

Owner Dillon Moore has long combined his passions for riding, mechanics, and adventure. Having spent years in the heavy equipment rental industry while running a side business buying, repairing, and selling dirt bikes, Dillon developed a deep appreciation for motorcycles—not just as machines, but as gateways to adventure.

When he took over operations in the fall of 2022, the company consisted of just himself and his shop manager. Since then, Dillon's team has grown to four full-time and two part-time employees—all of whom are avid motorcycle riders themselves. Collectively, the team has over 50 years of combined riding experience.





They know adventure motorcycling. They also know adventure motorcycles.

Recognizing the growing demand for ADV motorcycle service and outfitting, Dillon launched Adventure Motorcycle Works (AMW)—CMA's sister company dedicated to servicing, repairing, and equipping adventure motorcycles for riders ready to tackle the unknown.

For those who already own an adventure motorcycle, AMW offers expert service, custom outfitting, and repairs—helping riders prepare their bikes with suspension upgrades, luggage systems, routine maintenance, and more. Whether you're getting your bike ready for a long-distance ADV tour or just need a pre-ride tune-up, the AMW team ensures you and your machine are adventure-ready.

Colorado Motorcycle Adventures and Adventure Motorcycle Works are proud to call Lone Tree home, welcoming hundreds of riders from around the world each year. But beyond rentals and service, their businesses are built on community, adventure, and a shared passion for motorcycling.

To celebrate, they're inviting local motorcycle enthusiasts to their grand opening event for AMW on Saturday, May 10 from 12:00 - 5:00 p.m. Come by, meet fellow adventure riders, and celebrate the launch of AMW. The event will feature industry partners showcasing the latest gear and accessories, representatives from local ADV riding groups, Lone Tree Brewing Company pouring beer, and a local food truck serving up great eats. ♦



Welcome

NEW LONE TREE BUSINESSES

Happy Crew Coffee House
9044 Forsstrom Dr

Boost Med Spa & Wellness
9227 Lincoln Ave Suite 700 Studio 113



LONE TREE COMMUNITY SPOTLIGHT

The Happy Crew Coffee House

9044 Forsstrom Drive, Lone Tree

happycrewcoffeehouse.com

303-916-1515

In Douglas County, suicide is the leading cause of death for youth ages 10-24. Colorado ranks 41st in the nation for youth mental health support access. Behind these statistics are real teens who often feel alone, unsure where to turn.

In March, Lone Tree became home to an exciting partnership between the Business Foundry and The Happy Crew, a nonprofit dedicated to teen mental health and suicide prevention. As part of this collaboration, The Happy Crew celebrated the grand opening of a membership-only café, The Happy Crew Coffee house, on the rooftop of Business Foundry. The Happy Crew Coffee House aims at helping teens find themselves, find their voice, and know they matter through a safe and welcoming space for Douglas County teens while generating sustainable funding to support mental health initiatives.

So how does it work? The Happy Crew Coffee House offers individuals, corporate partners or students a



selected monthly membership. Your membership loads as a monthly credit for coffee, food, and drinks which you can spend at the shop throughout the month. Members can enjoy premium coffee and workspace while knowing every purchase directly supports Happy Crew's youth mental health initiatives. Bring clients, meet friends, or find your quiet corner—this is your space to thrive while creating change for the Lone Tree community and beyond.





The Happy Crew's mission, founded in 2007 by Amy May, is to destigmatize mental health, foster community, and ensure no teen feels alone. May has worked alongside teens for over 30 years, helping them navigate life's challenges. As a youth director and counselor, she learned something crucial: teens need more than programs. They need places where they feel they truly belong, where getting support doesn't feel like a big deal. Through this partnership, 100% of café membership proceeds will be reinvested into developing new mental health and suicide prevention programs in collaboration with Business Foundry, further expanding support for local youth.

In the 2024-2025 school year, Happy Crew will host a total of 23 weekly meetings that bring together an average of 75 students each time. Already, 183 different teens have found community through Happy Crew this year alone—and they are on track to connect with over 200 students before summer.

This partnership is about more than just a café—it's about creating a place where teens feel valued, heard, and supported. Community members, local businesses, and residents are encouraged to get involved and support this initiative. For more information, reach out to Amy May, Founder and President of The Happy Crew at amy@thehappycrew.org. ♦



STAY CONNECTED WITH THE CITY OF LONE TREE

Keep up with City updates, news, and important information you need to know about living and working in the City. Your participation and feedback can play an active role in shaping the future of our community.



Visit Our
Website
cityoflonetree.com

Follow Us On Social Media



Facebook
City of Lone Tree
Government



Instagram
[@cityoflonetree](https://www.instagram.com/cityoflonetree)



X (Twitter)
[@cityoflonetree](https://twitter.com/cityoflonetree)



Nextdoor
City of Lone Tree



LinkedIn
City of Lone
Tree, CO

Receive our Monthly E-Timberlines via email
Go.cityoflonetree.com/send-me-timberlines

Get SMS Texts from the City via TextmyGov
Go.cityoflonetree.com/city-text-signup