

UNTIL SUCH TIME AS
THESE DRAWINGS ARE
APPROVED BY THE
APPROPRIATE REVIEWING
AGENCIES, OR ENGINEERING
APPROVES THEIR USE,
THESE DRAWINGS ARE
DESIGNATED BY WRITTEN
AUTHORIZATION.

PREPARED FOR
SH LYRIC, LLC
9380 STATION ST.
SUITE 600
LONE TREE, CO 80124
OFFICE PHONE
(303) 791-8180

J.R. ENGINEERING
A Westman Company

Central 303-740-9888 • Colorado Springs 719-583-2583
Fort Collins 970-491-9888 • www.jrengineering.com

- NOTES:**
- SEE SHEET 1 FOR BENCHMARK AND SHEET 3 FOR LEGEND.
 - SEE SHEET 2 FOR STANDARD GESC NOTES.
 - SEE SHEETS 7 - 9 FOR STANDARD GESC DETAILS.
 - NO GRADING OPERATIONS SHALL OCCUR WITHIN 20' OF OVERHEAD TRANSMISSION TOWERS.
 - CONSTRUCTION MARKERS TO BE PLACED 100' APART
 - CONTRACTOR SHALL HAVE ADEQUATE DUST SUPPRESSION CONTROL MEASURES ONSITE AT ALL TIMES. EXCESS DUST GENERATED FROM OPERATIONS AS DETERMINED BY THE CITY IS GROUNDS FOR STOPPING ALL WORK UNTIL DUST CAN BE CONTROLLED.
 - ADJACENT PAVED ROADWAYS SHALL BE KEPT CLEAR OF DEBRIS AND SEDIMENT/MUD TRACKING AT ALL TIMES. WHEN TRACKING OCCURS IT MUST BE IMMEDIATELY CLEANED USING ONLY DRY METHODS OF CLEANING PER CITY.

BY	DATE	No.	REVISION
		1"	50'
		V-SCALE	N/A
		DATE	7/13/22
		DESIGNED BY	GC
		DRAWN BY	GC
		CHECKED BY	

CITY OF LONE TREE

DATE

THESE CONSTRUCTION PLANS HAVE BEEN REVIEWED
BY CITY OF LONE TREE FOR GRADING AND EROSION
CONTROL IMPROVEMENTS ONLY.

ENGINEERING DIVISION ACCEPTANCE BLOCK

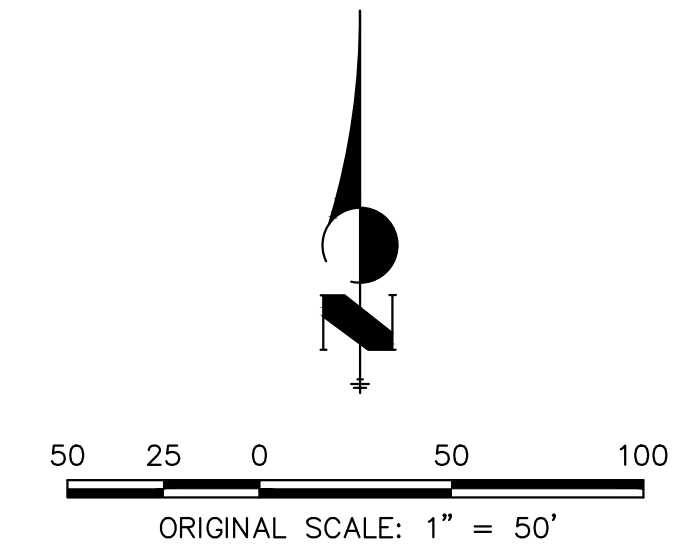


ENGINEER'S STATEMENT

THE GRADING, EROSION, AND SEDIMENT CONTROL PLAN INCLUDED HEREIN HAS BEEN PREPARED UNDER MY DIRECT SUPERVISION IN ACCORDANCE WITH THE REQUIREMENTS OF CITY OF LONE TREE GRADING, EROSION, AND SEDIMENT CONTROL (GESC) CRITERIA

**PRELIMINARY
NOT FOR
CONSTRUCTION**

AARON L. CL...
COLORADO P.E.
FOR AND ON BEHALF OF JR ENGINEERING, LLC



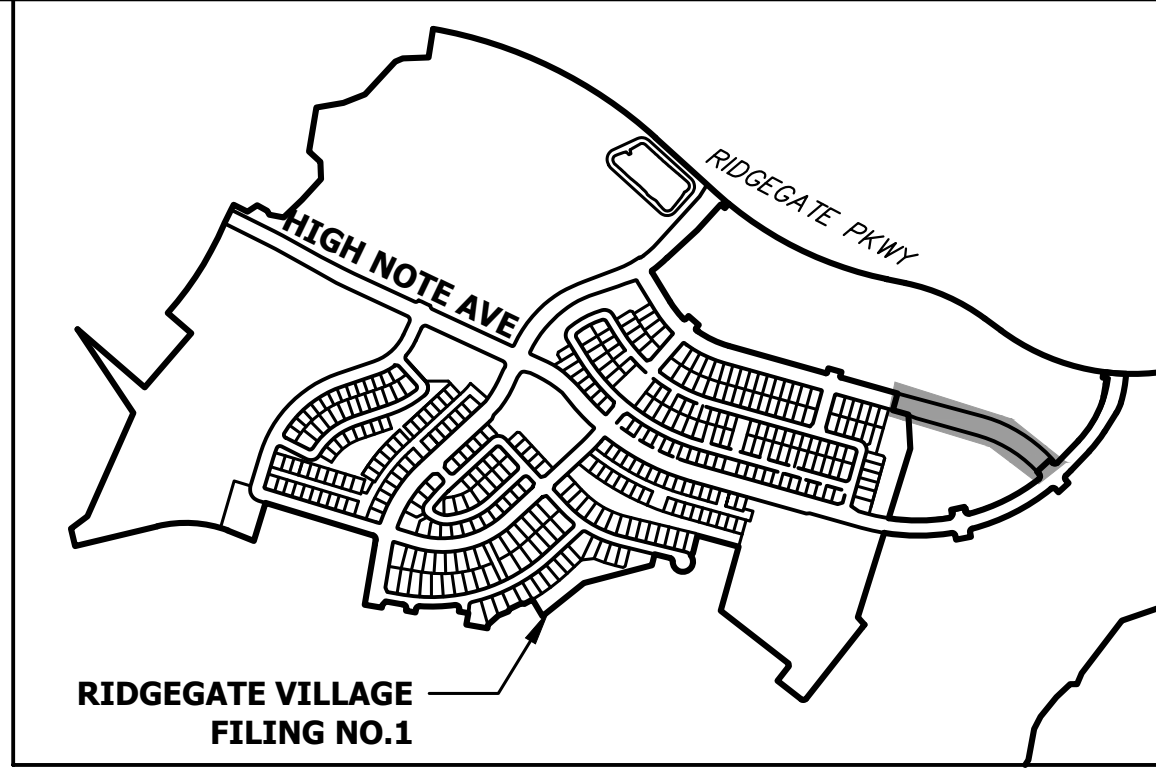
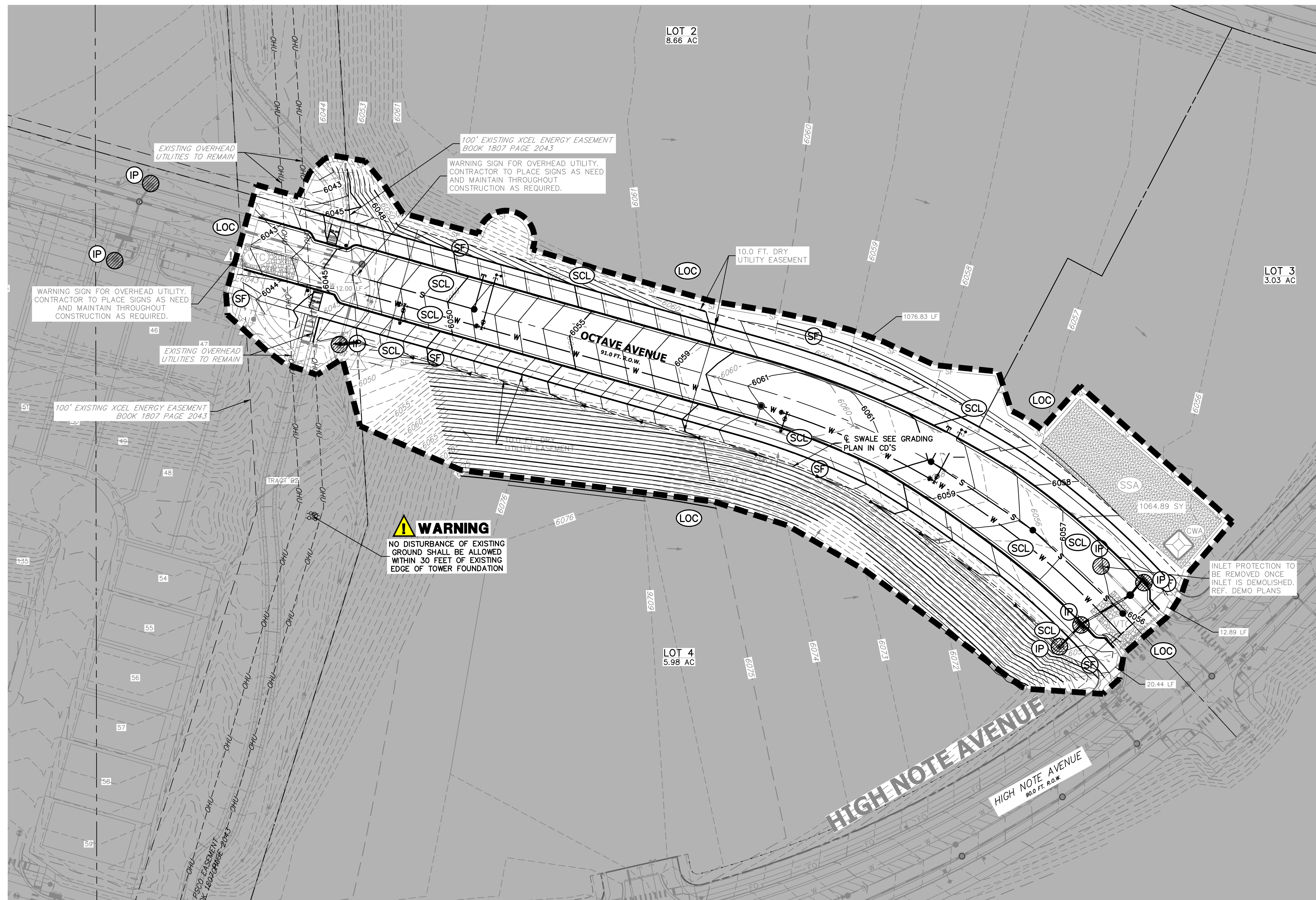
OCTAVE AVENUE EXTENSION

INITIAL GESC PLAN

SHEET 4 OF 9

JOB NO. 15950.03

X:\15950.03\15950.03\Drawings\Sheet\Drawings\CD\GESC\15950.03 INITIAL.dwg, INITIAL, 10/19/2022 2:44:55 PM, p006p6




KEYMAP
SCALE: 1" = 1000'

UNTIL SUCH TIME AS THESE DRAWINGS ARE APPROVED BY THE APPROPRIATE REVIEWING AGENCIES, OR ENGINEERING APPROVES THEIR USE, THESE DRAWINGS ARE DESIGNATED BY WRITTEN AUTHORIZATION.

PREPARED FOR
SH LYRIC, LLC
9380 STATION ST.
SUITE 600
LONE TREE, CO 80124
OFFICE PHONE
(303) 791-8180

J.R. ENGINEERING
A Westman Company



Central 303-740-9888 • Colorado Springs 719-583-2583
Fort Collins 970-491-9888 • www.jrengineering.com

- NOTES:**
- SEE SHEET 1 FOR BENCHMARK AND SHEET 3 FOR LEGEND.
 - SEE SHEET 2 FOR STANDARD GESIC NOTES.
 - SEE SHEETS 7 - 9 FOR STANDARD GESIC DETAILS.
 - NO GRADING OPERATIONS SHALL OCCUR WITHIN 20' OF OVERHEAD TRANSMISSION TOWERS.
 - CONSTRUCTION MARKERS TO BE PLACED 100' APART.
 - CONTRACTOR SHALL HAVE ADEQUATE DUST SUPPRESSION CONTROL MEASURES ONSITE AT ALL TIMES. EXCESS DUST GENERATED FROM OPERATIONS AS DETERMINED BY THE CITY IS GROUNDS FOR STOPPING ALL WORK UNTIL DUST CAN BE CONTROLLED.
 - ADJACENT PAVED ROADWAYS SHALL BE KEPT CLEAR OF DEBRIS AND SEDIMENT/MUD TRACKING AT ALL TIMES. WHEN TRACKING OCCURS IT MUST BE IMMEDIATELY CLEANED USING ONLY DRY METHODS OF CLEANING PER CITY.

BY	DATE	No.	REVISION

CITY OF LONE TREE

DATE

THESE CONSTRUCTION PLANS HAVE BEEN REVIEWED BY CITY OF LONE TREE FOR GRADING AND EROSION CONTROL IMPROVEMENTS ONLY.

ENGINEERING DIVISION ACCEPTANCE BLOCK

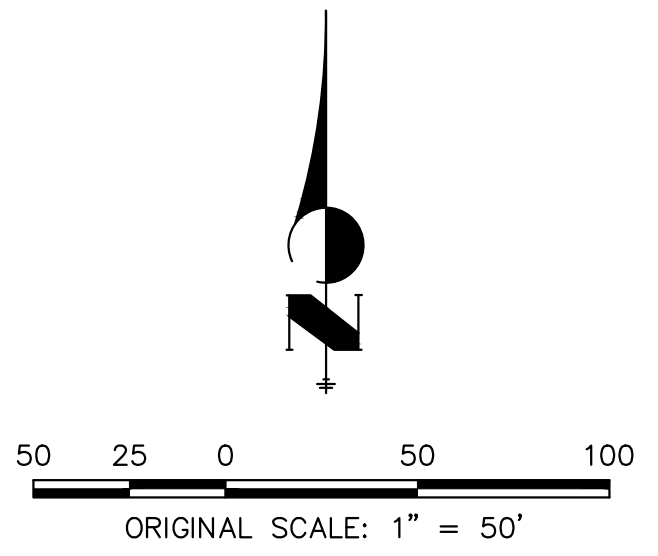


ENGINEER'S STATEMENT

THE GRADING, EROSION, AND SEDIMENT CONTROL PLAN INCLUDED HEREIN HAS BEEN PREPARED UNDER MY DIRECT SUPERVISION IN ACCORDANCE WITH THE REQUIREMENTS OF CITY OF LONE TREE GRADING, EROSION, AND SEDIMENT CONTROL (GESIC) CRITERIA

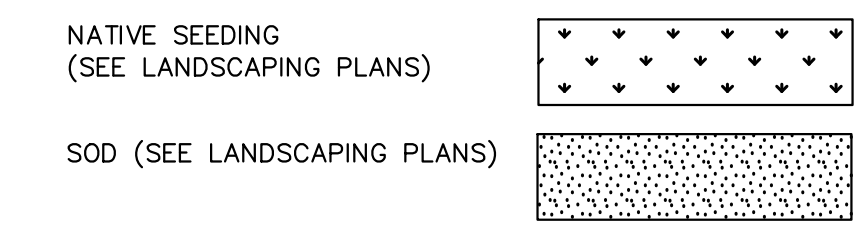
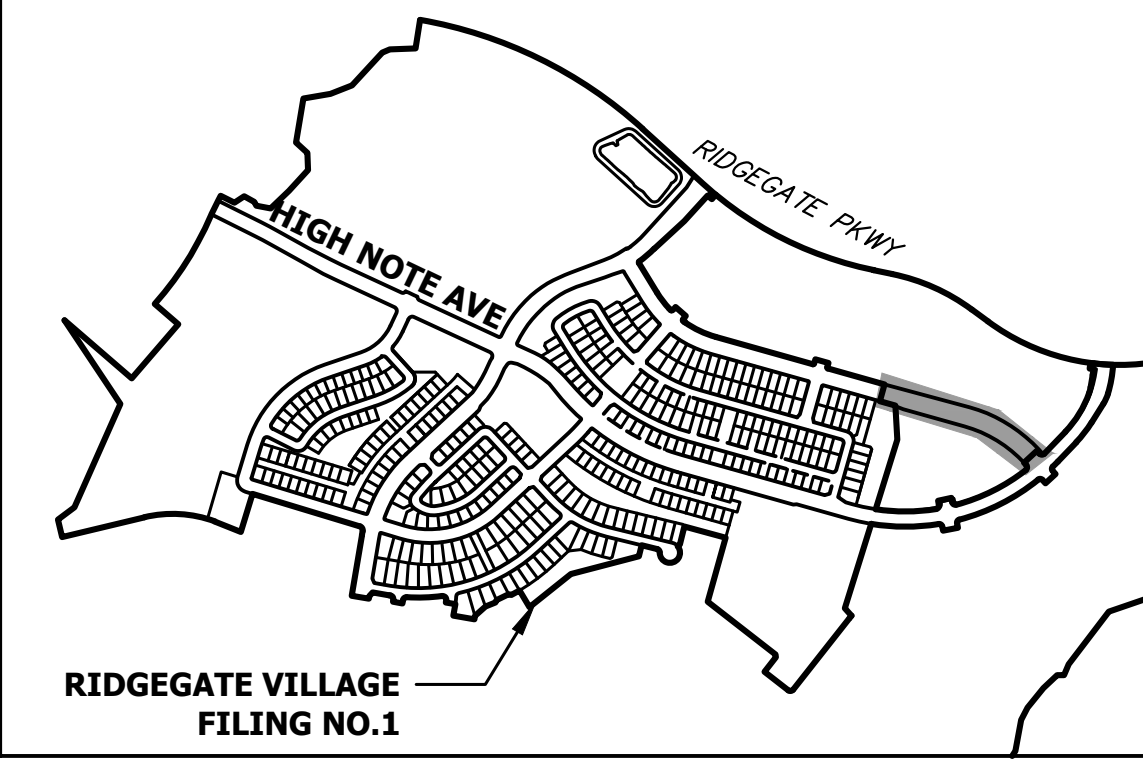
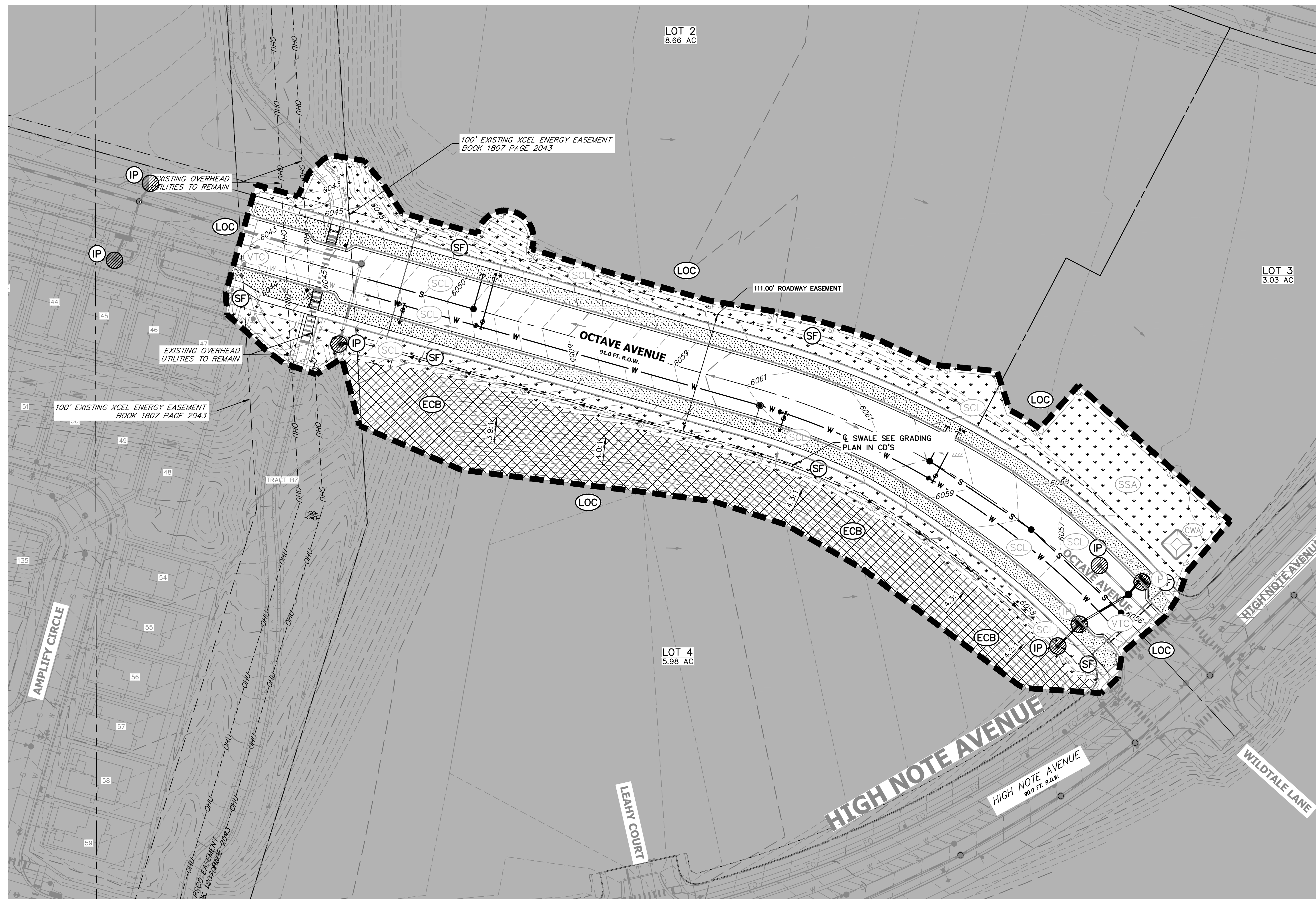
**PRELIMINARY
NOT FOR
CONSTRUCTION**

AARON L. CL...
COLORADO P.E. #...
FOR AND ON BEHALF OF JR ENGINEERING, LLC



OCTAVE AVENUE EXTENSION	SHEET 5 OF 9
INTERIM GESIC PLAN	JOB NO. 15950.03

X:\15950000\all\15950003\Drawings\Sheet\Drawings\Sheet\Drawings\15950003\INTERIM.dwg, INTERIM, 10/18/2022 2:45:01 PM, jrengp



- NOTES:**
- SEE SHEET 1 FOR BENCHMARK AND SHEET 3 FOR LEGEND.
 - SEE SHEET 2 FOR STANDARD GESC NOTES.
 - SEE SHEETS 7 - 9 FOR STANDARD GESC DETAILS.
 - NO GRADING OPERATIONS SHALL OCCUR WITHIN 20' OF OVERHEAD TRANSMISSION TOWERS.
 - CONSTRUCTION MARKERS TO BE PLACED 100' APART.
 - CONTRACTOR SHALL HAVE ADEQUATE DUST SUPPRESSION CONTROL MEASURES ON-SITE AT ALL TIMES. EXCESS DUST GENERATED FROM OPERATIONS AS DETERMINED BY THE CITY IS GROUNDS FOR STOPPING ALL WORK UNTIL DUST CAN BE CONTROLLED.
 - ADJACENT PAVED ROADWAYS SHALL BE KEPT CLEAR OF DEBRIS AND SEDIMENT/MUD TRACKING AT ALL TIMES. WHEN TRACKING OCCURS IT MUST BE IMMEDIATELY CLEANED USING ONLY DRY METHODS OF CLEANING PER CITY.

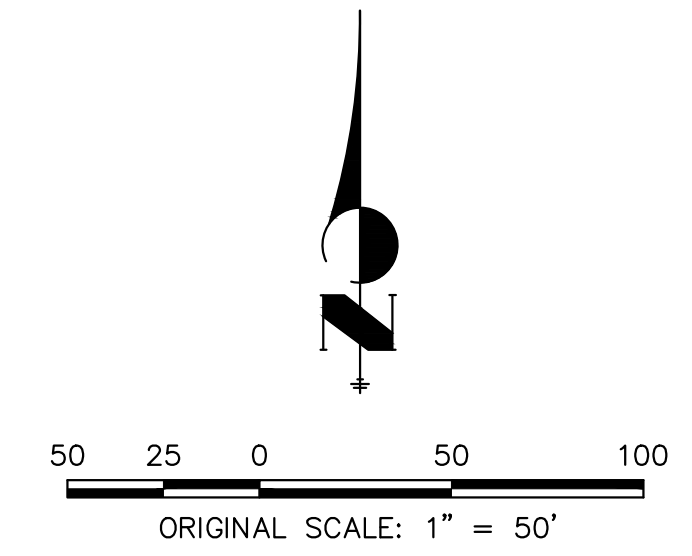
CITY OF LONE TREE
 DATE
 THESE CONSTRUCTION PLANS HAVE BEEN REVIEWED BY CITY OF LONE TREE FOR GRADING AND EROSION CONTROL IMPROVEMENTS ONLY.
 ENGINEERING DIVISION ACCEPTANCE BLOCK



ENGINEER'S STATEMENT
 THE GRADING, EROSION, AND SEDIMENT CONTROL PLAN INCLUDED HEREIN HAS BEEN PREPARED UNDER MY DIRECT SUPERVISION IN ACCORDANCE WITH THE REQUIREMENTS OF CITY OF LONE TREE GRADING, EROSION, AND SEDIMENT CONTROL (GESC) CRITERIA

PRELIMINARY NOT FOR CONSTRUCTION

AARON L. CL...
 COLORADO P.E.
 FOR AND ON BEHALF OF JR ENGINEERING, LLC



UNTIL SUCH TIME AS THESE DRAWINGS ARE APPROVED BY THE APPROPRIATE REVIEWING AGENCIES, OR ENGINEERING APPROVES THEIR USE, THESE DRAWINGS ARE DESIGNATED BY WRITTEN AUTHORIZATION.
 PREPARED FOR
 SH LYRIC, LLC
 9380 STATION ST.
 SUITE 600
 LONE TREE, CO 80124
 OFFICE PHONE
 (303) 791-8180

J.R. ENGINEERING
 A Westman Company
 Centennial 303-740-9888 • Colorado Springs 719-583-2583
 Fort Collins 970-491-9888 • www.jrengineering.com

BY	DATE	No.	REVISION

OCTAVE AVENUE EXTENSION	DESIGNED BY	GC
FINAL GESC PLAN	DRAWN BY	GC
	CHECKED BY	
SHEET 6 OF 9		
JOB NO. 15950.03		

X:\15950.03\15950.03\Drawings\Sheet\Grading\CD\GESC\15950.03.FINAL.dwg, FINAL, 10/19/2022 2:45:54 PM, jposay

