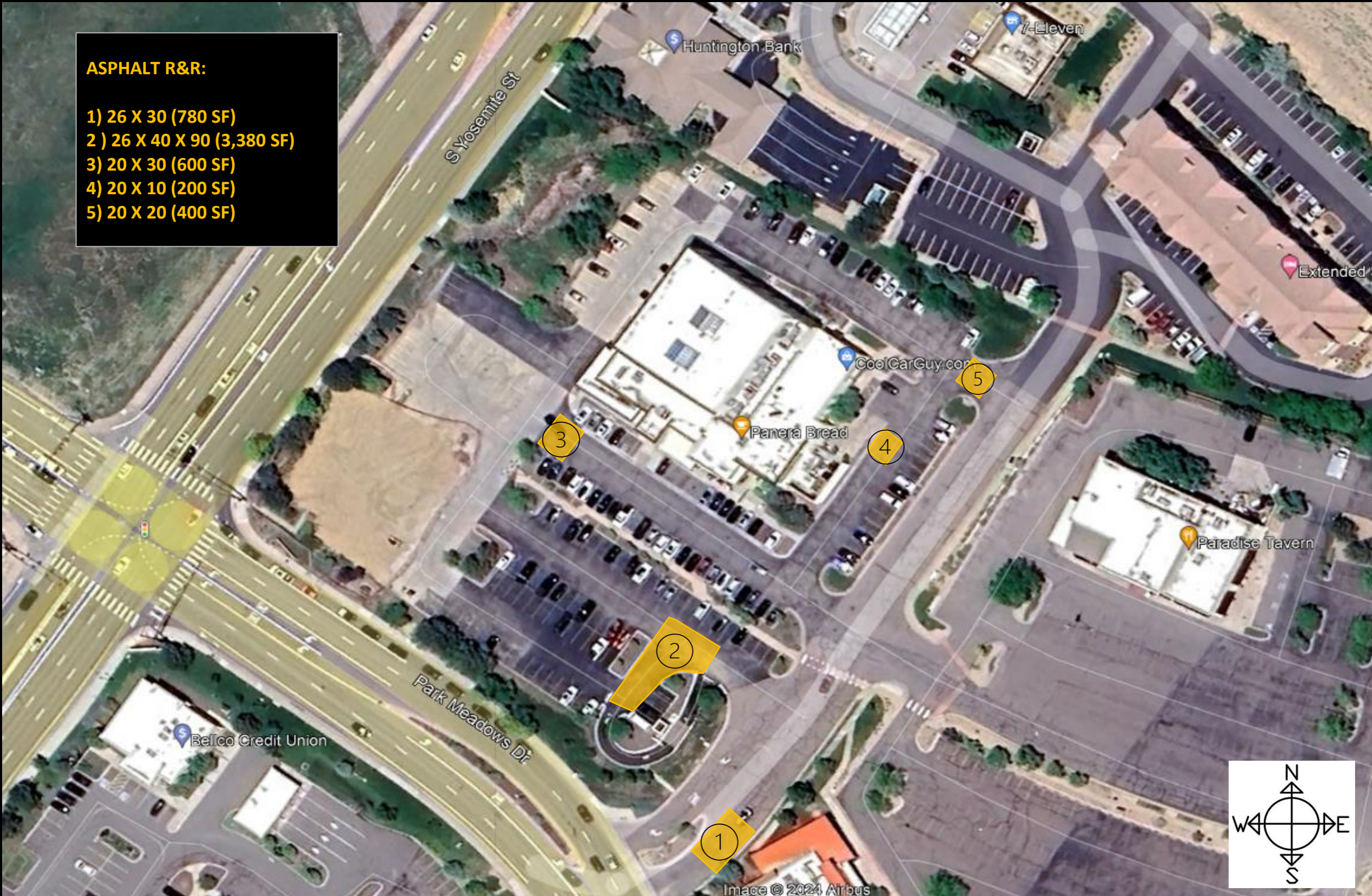


ASPHALT R&R:

- 1) 26 X 30 (780 SF)
- 2) 26 X 40 X 90 (3,380 SF)
- 3) 20 X 30 (600 SF)
- 4) 20 X 10 (200 SF)
- 5) 20 X 20 (400 SF)



BROWN BROTHERS ASPHALT AND CONCRETE
ASPHALT - CONCRETE - BRICK PAVERS
8200 S Akron St. Suite 105 Englewood, CO 80112

Job Name:
Address:

City of Lone Tree (Rio Grande)
9355 Park Meadows Dr, Lone Tree, CO 80124

303-781-9999
asphaltconcrete.net



BROWN BROTHERS ASPHALT AND CONCRETE

ASPHALT - CONCRETE - BRICK PAVERS

8200 S Akron St. Suite 105 Englewood, CO 80112

303-781-9999

asphaltconcrete.net

ASPHALT R&R and C&G:

- 1) 30 X 20, 20 X 80 (2,200 SF)
- 2) 10 X 10 (100 SF)
- 3) 10 LIN FT of C&G, 10 X 10 (100 SF)
- 4) 40 LIN FT of C&G, 40 X 10 (400 SF)
- 5) 30 LIN FT of C&G, 22 X 40 (880 SF)

9,300 LIN FT OF CRACK FILL

STRIPE TO MATCH EXISTING LAYOUT



Image © 2024 Airbus

Job Name:

City of Lone Tree (Rio Grande)

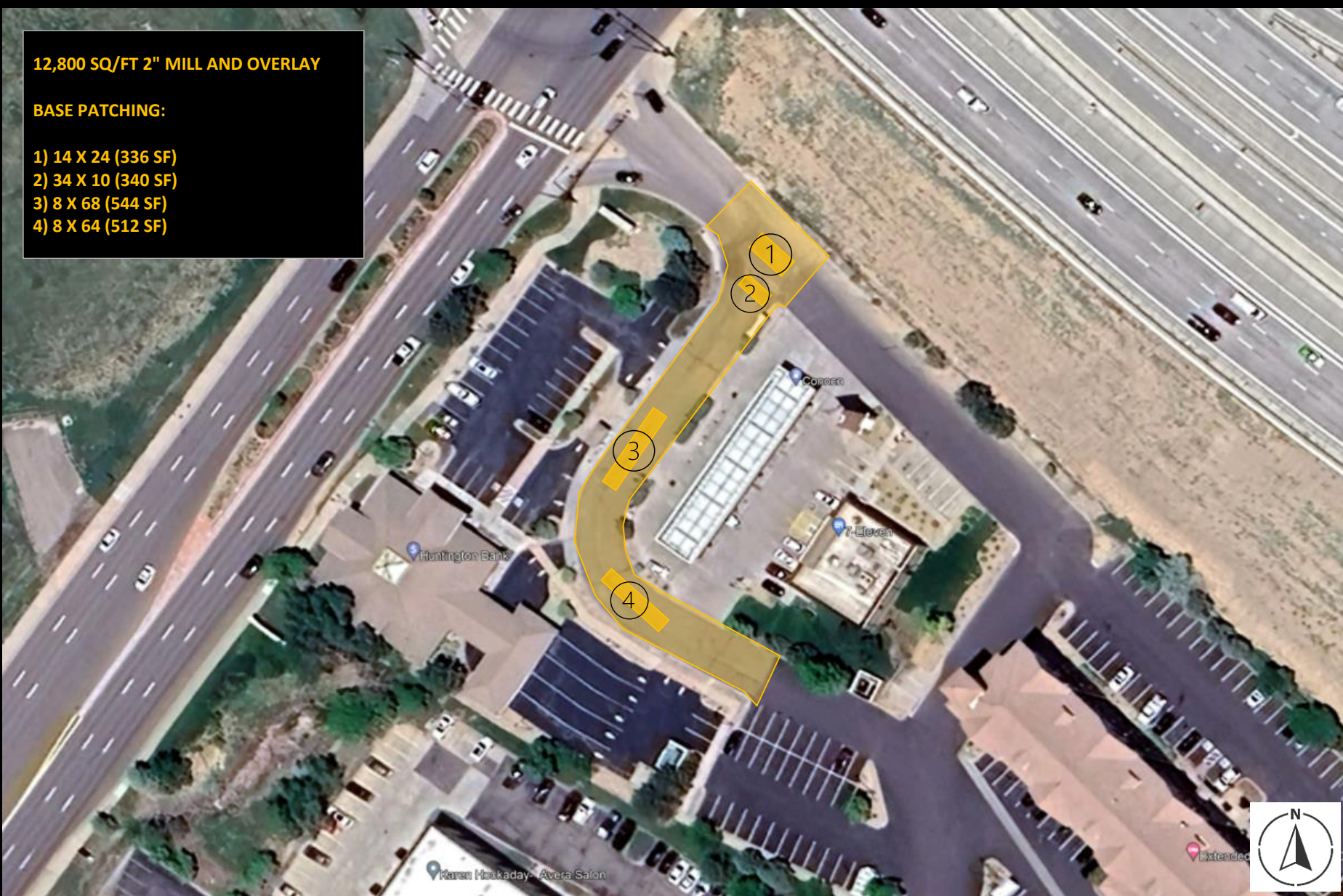
Address:

9355 Park Meadows Dr, Lone Tree, CO 80124

12,800 SQ/FT 2" MILL AND OVERLAY

BASE PATCHING:

- 1) 14 X 24 (336 SF)
- 2) 34 X 10 (340 SF)
- 3) 8 X 68 (544 SF)
- 4) 8 X 64 (512 SF)



BROWN BROTHERS ASPHALT AND CONCRETE
ASPHALT - CONCRETE - BRICK PAVERS
8200 S Akron St. Suite 105 Englewood, CO 80112

Job Name:
Address:

City of Lone Tree (Huntington Lot - Option 1)
9355 Park Meadows Dr, Lone Tree, CO 80124

303-781-9999
asphaltconcrete.net